



# A stylish apartment boasting contemporary accommodation

**Bourchier Court, London Road, Sevenoaks, Kent, TN13**

£1,350 pcm plus fees apply, Unfurnished  
Available from 30.12.2019, EPC Rating = B

savills



• Luxury 3rd floor apartment • Juliette balcony • Contemporary specification • Beautifully landscaped gardens Concierge service and business suite • Allocated parking for 1 car • M25 (Junction 5) 2.8 miles • Internal images are of show apartment

### About this property

Carefully designed to maximise light and space, this apartment benefits from the superb specification throughout including wood-effect flooring to the kitchen, living room and hallway, oversized entrance doors, carpeted bedrooms, recessed downlights to the main living areas and fitted wardrobes to the master bedroom.

### GENERAL FEATURES

- Centrally provided heating and hot water, individually metered to each apartment
- Bicycle storage

### FIXTURES & FITTINGS

- Wardrobes to master bedroom
- Recessed downlights to kitchen (dimmer facility to living room), bathrooms, en suite and hall
- Sky+, TV and telephone outlets to living room and master bedroom
- Oversized entrance doors

### SECURITY AND PEACE OF MIND

- Video entry phone system
- Mains powered smoke/heat detectors with battery backup to apartments

### COMMUNAL AREAS

- Tiled entrance foyer
- Business suite
- Elevators serving all floors
- Architecturally designed and landscaped split level gardens

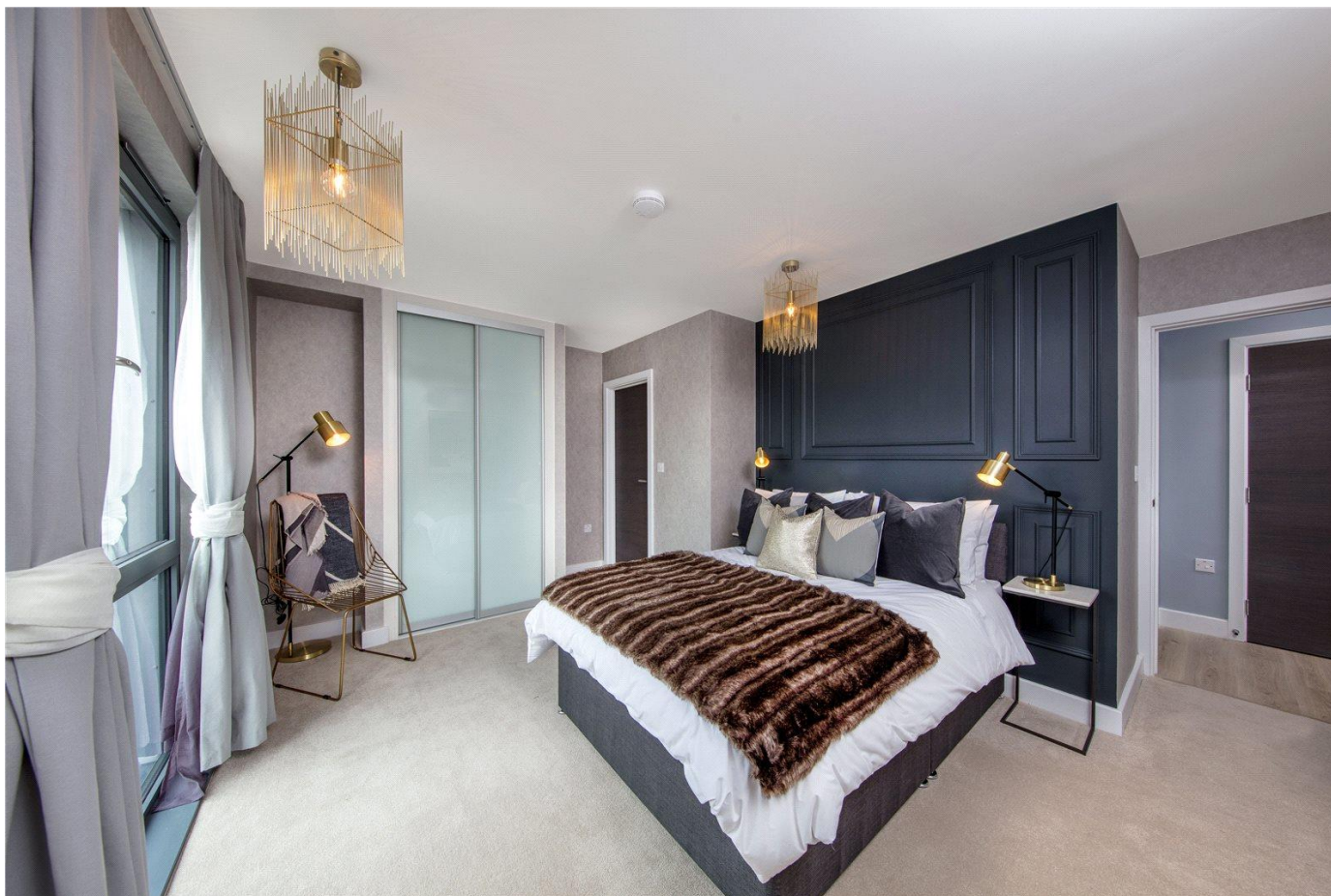
\*Internal images are of show apartment

### Local Authority

Sevenoaks District Council

### Viewing

All viewings will be accompanied and are strictly by prior arrangement through Savills Sevenoaks Lettings Office.







### Local Information

Described as 'breathtakingly pretty' and a 'commuter haven' by The Guardian, Sevenoaks is without doubt one of the most desirable towns in Kent. Perfectly appointed for the unspoiled beauty of the North Downs and rich in history, architecture and heritage, Sevenoaks is the perfect place to get outdoors and enjoy the fresh air, yet is still within easy reach of the City. At Bouchier Court Sevenoaks you can enjoy the best of all worlds.

Decidedly chic and unashamedly affluent, Sevenoaks has so much to offer. The local shopping experience combines the best High Street names, including M&S and Waitrose, with an abundance of small independent speciality shops and boutiques. Whether entertaining friends or just indulging in a special night out for two, you'll be spoiled for choice by the number of outstanding pubs and restaurants both in town and the surrounding villages. Whether you want to enjoy a movie or quality theatre, the Stag Community Arts Centre offers a rich and varied calendar.

Sporting facilities in and around the area include riding schools, a cricket club, tennis, fishing and sailing facilities as well as a choice of golf courses. Additionally, the Sevenoaks Leisure Centre offers an excellent gym and pool and there's a wide variety of private health club facilities in the area. Sevenoaks wildlife reserve with its five tranquil lakes provides the perfect venue for leisurely walks but it's Knole Park that is really the jewel in the town's crown. Situated on the eastern edge of Sevenoaks, this stunning 600-year-old stately home combines numerous historic treasures with an imposing walled garden and 1,000 acre deer park.

Get away from it all and relax. At Sevenoaks, the stunning and historic North Downs are very close to home, providing a striking backdrop; explore hundreds of miles of beautiful unspoiled English countryside and discover scenic valleys, historic castles and quaint villages with tempting country pubs. But why stick to the roads? The North Downs offer a wealth of quiet, gentle paths and bridleways that are just perfect for rambling, cycling or trekking on horseback.



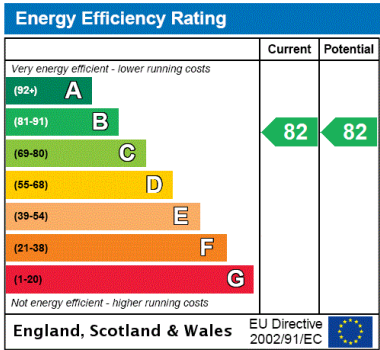
Bourchier Court, London Road, Sevenoaks, Kent, TN13  
Gross Internal Area 738 sq ft, 68.6 m<sup>2</sup>

Olivia Thomas  
Sevenoaks Lettings  
+44 (0) 1732 789 760  
othomas@savills.com



Kitchen/Living/Dining	3550mm x 6269mm	11'8" x 20'7"
Bedroom 1	3348mm x 4850mm	11'0" x 15'11"
Bedroom 2	2974mm x 4093mm	9'9" x 13'5"

\*Denotes handed apartment.  
Dimensions shown are approximate only and may vary within a tolerance of ±100mm.  
Kitchen layout indicative.



**Important notice** Savills, their clients and any joint agents give notice that: 1. They are not authorised to make or give any representations or warranties in relation to the property either here or elsewhere, either on their own behalf or on behalf of their client or otherwise. They assume no responsibility for any statement that may be made in these particulars. These particulars do not form part of any offer or contract and must not be relied upon as statements or representations of fact. 2. Any areas, measurements or distances are approximate. The text, images and plans are for guidance only and are not necessarily comprehensive. It should not be assumed that the property has all necessary planning, building regulation or other consents and Savills have not tested any services, equipment or facilities. Prospective tenants must satisfy themselves by inspection or otherwise. Please note that the local area may be affected by aircraft noise, you should make your own enquiries regarding any noise within the area before you make any offer.

\*There are different rules and fees for different tenancy types. For details of our fees and charges to go to Savills.co.uk/tenant-fees. For more detailed information read our applicant guide at savills.co.uk/applicant-guide.  
Hard copy available on request. . 20191029MEHE

