



A penthouse apartment in a gated development

Flat 14, Wilbury Lodge, Dry Arch Road, Sunningdale, Berkshire, SL5 0DB

Leasehold - 125 years from 1st January 2005

savills

Living room • Kitchen/breakfast room • 2 bedrooms
• 2 bathrooms (one en suite) • Underground parking
• Underground storage unit • Lift accessible
• Communal gardens

Description

14 Wilbury Lodge is a beautifully presented penthouse apartment set in a gated development. Located on the second floor you enter the apartment into a light and bright hallway with skylights. There is a well proportioned living room, a modern kitchen/breakfast room, a master bedroom with built-in wardrobes and en-suite shower room; a second bedroom and separate bathroom. The apartment has two allocated underground parking spaces and an underground storage unit.

Situation

Wilbury Lodge is conveniently situated for local shops at Sunningdale and the railway station serving London (Waterloo)

By road, connections are excellent, with access to both the M3 (Junction 3) and the M25 (Junction 13), which in turn lead to Heathrow Airport and the M4.

Leasehold: 125 years from 1st January 2005

Services: The property has mains gas, electricity, water and drainage

Fixtures and fittings: All items of fixtures and fittings, including carpets, curtains, blinds, light fittings and kitchen equipment are specifically excluded unless mentioned.

Agent comments:
Photographs dated
September 2017





Flat 14, Wilbury Lodge, Dry Arch Road, Sunningdale, Berkshire, SL5 0DB
Approximate Area 109.0 sq m / 1193 sq ft



savills

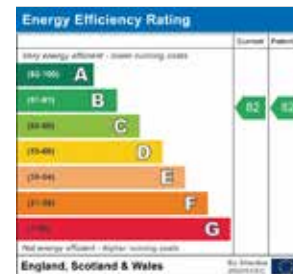
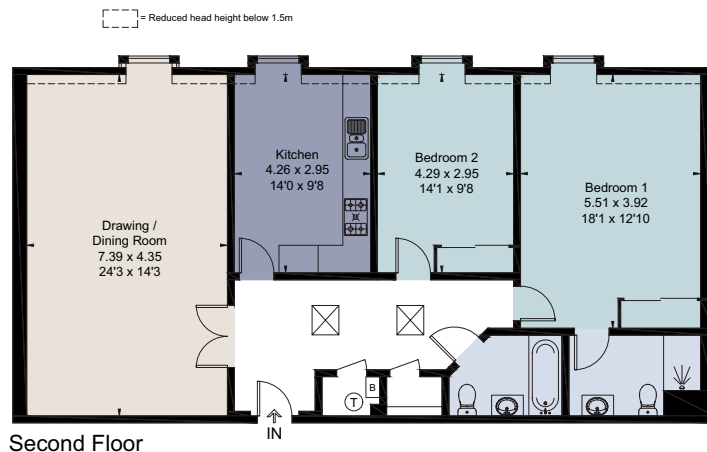
savills.co.uk

Frazer Chown

Savills Sunningdale

01344 626162

sunningdale@savills.com



For identification only. Not to scale. © 210203FC

Important notice Savills, its clients and any joint agents give notice that 1: They are not authorised to make or give any representations or warranties in relation to the property either here or elsewhere, either on their own behalf or on behalf of their client or otherwise. They assume no responsibility for any statement that may be made in these particulars. These particulars do not form part of any offer or contract and must not be relied upon as statements or representations of fact. 2: Any areas, measurements or distances are approximate. The text, photographs and plans are for guidance only and are not necessarily comprehensive. It should not be assumed that the property has all necessary planning, building regulation or other consents and Savills have not tested any services, equipment or facilities. Purchasers must satisfy themselves by inspection or otherwise. Brochure by fourwalls-group.com

