



Refurbished 4 bedroom townhouse in the popular Virginia Park development.

**Holloway Drive, Virginia Water, Surrey, GU25**

£4,150 pcm plus fees apply, Unfurnished  
Available from 16.08.2021



- Refurbished to a high specification
- 4 bedrooms
- 3 bathrooms
- Large reception room with Orangery
- Kitchen/reception room
- Cloakroom and utility
- Courtyard garden
- Garage
- Residents leisure facilities including swimming pool and gym
- Available 16 August

#### Local Information

This unique property is situated in the gated community of Virginia Park, in the highly regarded and affluent village of Virginia Water which has a range of shops for daily needs and a mainline station serving London (Waterloo).

Transport links are good with J13 of the M25 available leading to the M3, M4 Heathrow Airport and central London.

There is an exceptional choice of schools in the area such as Eton College, Wellington College, St George's and St Mary's Schools in Ascot, St John's Beaumont, Papplewick School and The American Community School in Egham.

Sporting facilities include the golf clubs of Wentworth and Sunningdale, there is racing at Ascot and polo at Smith's Lawn. Virginia Water Lake, Windsor Great Park and the River Thames offer alternative leisure options.

#### About this property

This 4 bedroom semi detached property is located in the popular development Virginia Park and has been refurbished throughout to an impeccable standard. On the ground floor there is a spacious reception room which benefits from an Orangery with bi-

fold doors leading to the courtyard garden. Also on the ground floor is a garage, utility room and cloakroom. Stairs rise to the first floor which has a new kitchen with doors leading to the balcony plus a double bedroom and guest bathroom. The principal bedroom with en suite is located on the second floor along with 2 further bedrooms and a family bathroom. Externally the property benefits from 2 driveway parking spaces, a courtyard garden and access to the developments communal facilities which include a gym, pool, tennis courts and children's play area.

#### Furnishing

Unfurnished

#### Local Authority

Runnymede Borough Council  
Council Tax Band = G

#### Energy Performance

EPC Rating = C

#### Viewing

All viewings will be accompanied and are strictly by prior arrangement through Savills Sunningdale Lettings Office.  
Telephone: +44 (0) 1344 295 384.





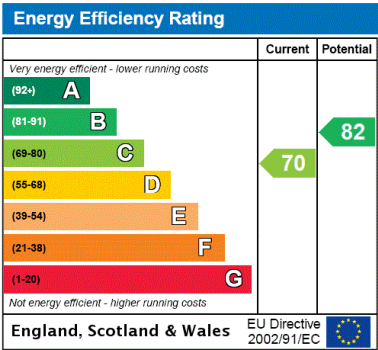
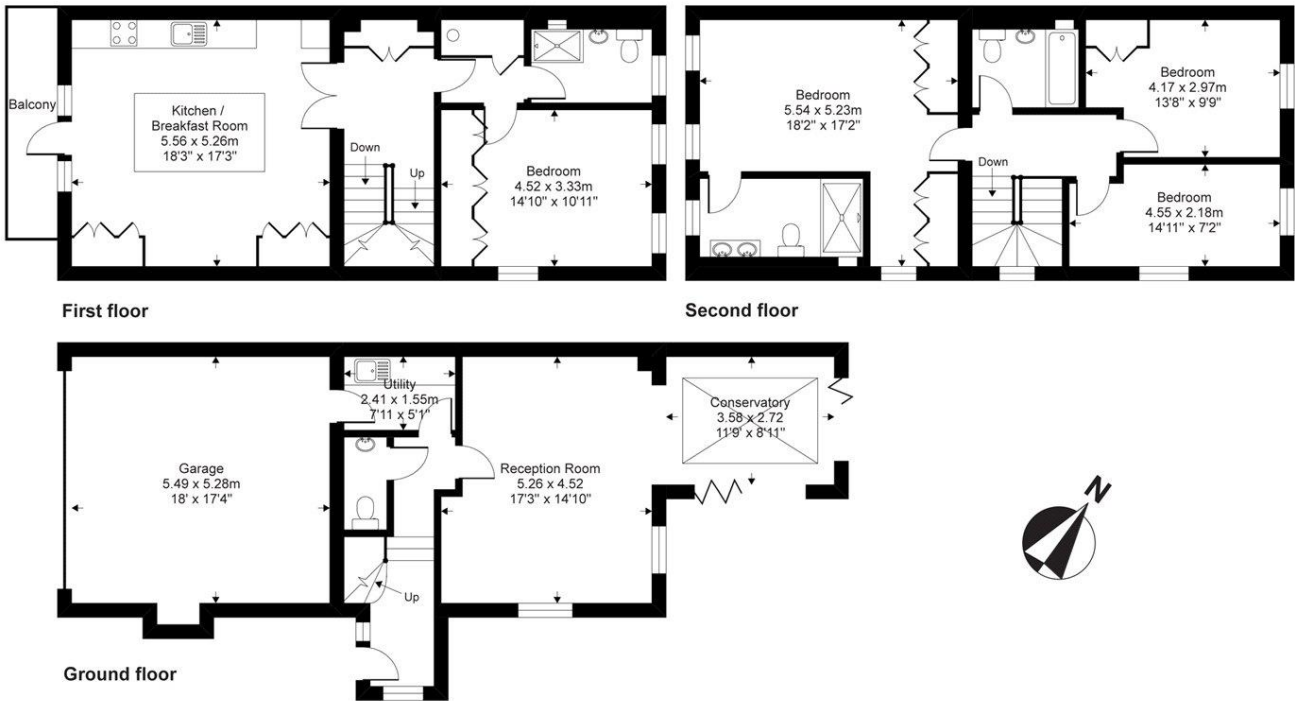




Holloway Drive, Virginia Water, Surrey, GU25  
Gross Internal Area 2254 sq ft, 209.4 m²

Holloway Drive, Virginia Water, GU25 4SY

Gross internal floor area (approx):  
209.3 sq m / 2254 sq ft (Includes Garage)  
For Identification only - Not to scale  
Niche Communications



**Important notice** Savills, their clients and any joint agents give notice that: 1. They are not authorised to make or give any representations or warranties in relation to the property either here or elsewhere, either on their own behalf or on behalf of their client or otherwise. They assume no responsibility for any statement that may be made in these particulars. These particulars do not form part of any offer or contract and must not be relied upon as statements or representations of fact. 2. Any areas, measurements or distances are approximate. The text, images and plans are for guidance only and are not necessarily comprehensive. It should not be assumed that the property has all necessary planning, building regulation or other consents and Savills have not tested any services, equipment or facilities. Prospective tenants must satisfy themselves by inspection or otherwise. Please note that the local area may be affected by aircraft noise, you should make your own enquiries regarding any noise within the area before you make any offer.

\*There are different rules and fees for different tenancy types. For details of our fees and charges please go to Savills.co.uk/tenant-fees. For more detailed information read our applicant guide at savills.co.uk/applicant-guide.  
Hard copy available on request. . 20210616MRCN

