

THE RUSSIAN HOUSE



27 THE VALE SW3

THE RUSSIAN HOUSE

A UNIQUE AND SPACIOUS PRIME CHELSEA FREEHOLD HOUSE PRESENTED IN EXCELLENT CONDITION.

Originally designed by the architect F.E. Williams in c. 1911-1913, this house was based on a traditional Russian Dacha and is Grade II listed. Benefitting from an exceptional first floor vaulted reception room, this property has the advantage of outstanding entertaining space, including a large panelled dining room, a generous cinema room, and a large and beautifully appointed study which further complements the well balanced bedroom accommodation. The house is further enhanced with a large conservatory which opens out onto a secluded and sunny rear west facing paved garden.

ACCOMMODATION

Entrance Hall, First Floor Studio Reception Room, Dining Room, Sitting Room, Study/Bedroom Five, Master Bedroom with En Suite Dressing Room and Bathroom, Three Further Bedrooms, Two En Suite Shower Rooms, En Suite Bathroom, Kitchen/Breakfast Room, Staff Bedroom with En Suite Bathroom and Kitchenette, Utility Room, Cinema, Gymnasium, Conservatory, Three Cloakrooms, Wine Cellar, Storage Room, Garden

HISTORICAL NOTE

27 The Vale was built in 1914 just before the start of the First World War, and incorporated a Russian Dacha that had formed part of a turn of the Century London exhibition. Early records show the house as 'The Russian Cottage' and throughout the First World War it was occupied by the British Red Cross.

Throughout much of the twentieth century the house was occupied by members of the Sainsbury family and narrowly escaped bomb damage during the Second World War, that destroyed and badly damaged other houses in the immediate vicinity. After the Second World War the house was occupied by a Conservative politician Sir Richard Hamilton Glyn before being turned into flats prior to its final reconversion to a single house in the late 1900s.



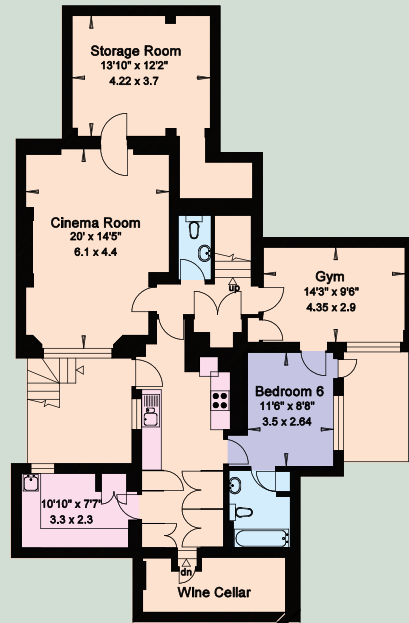




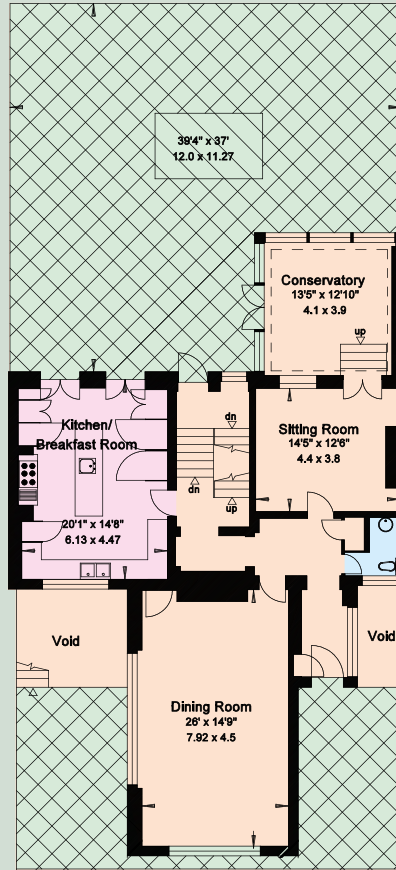
TENURE: FREEHOLD
 LOCAL AUTHORITY: ROYAL BOROUGH
 OF KENSINGTON & CHELSEA
 PRICE: ON APPLICATION



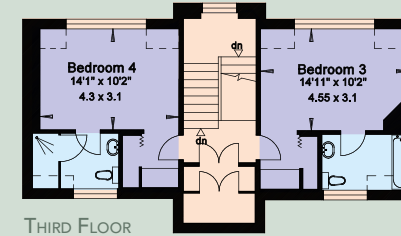
GROSS INTERNAL AREA
 498 SQUARE METRES
 5,370 SQUARE FEET



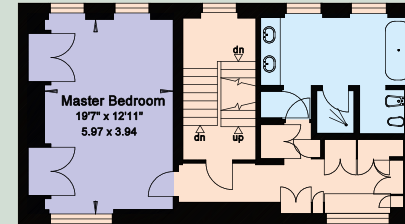
LOWER GROUND FLOOR



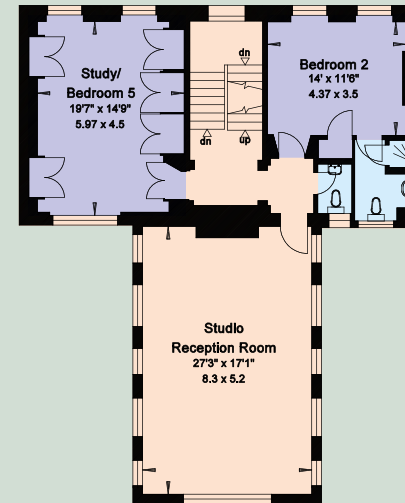
GROUND FLOOR



THIRD FLOOR



SECOND FLOOR



FIRST FLOOR



In accordance with the Property Mis-Description Act 1991, the following details have been prepared in good faith, and are not intended to constitute part of an offer or contract. Any information contained herein (whether in the text, plans or photographs) is given in good faith but should not be relied upon as being a statement of representation of fact. Nothing in these Particulars shall be deemed to be a statement that the property is in good condition or otherwise nor that any services or facilities are in good working order. Any measurements of distances referred to herein are approximate only. April 2018

355715

Savills Sloane Street
 sloanestreet@savills.com
 020 7730 0822
 Savills Knightsbridge
 knightsbridge@savills.com
 020 7581 5234
 savills.co.uk



**RUSSELL
 SIMPSON**
 5 Anderson Street, London SW3 3LU
 020-7225 0277
 www.russellsimpson.co.uk