

MOZART TERRACE

BELGRAVIA SW1



MOZART TERRACE

BELGRAVIA SW1





Wolfgang Amadeus Mozart stayed at 180 Ebury Street in the summer of 1765, formerly known as 'Fivefields Row' and renamed as Mozart Terrace following the composer's stay in the street.

180 Mozart Terrace is a wonderful house in the heart of Belgravia. This Grade I Listed house was built in c.1730.

Set back from the road by a paved garden at the front, it is a wide, south facing period house benefitting from many original features and unusual proportions.

The property is arranged over four storeys and has an unusually large garden to the rear with a separate private office building, guest flat and staff accommodation situated at the northern end.

Within the main house, the lower ground floor provides dining room, kitchen and cloakroom. The upper ground provides the entrance hall, drawing room, large reception space, a family room leading out to the garden.

The first floor comprises the master bedroom, dressing room and en suite bathroom and on the second floor there are 2 bedroom suites (one with en suite shower room and the other with en suite bathroom).







LOCATION

Mozart Terrace is a highly regarded street situated in Belgravia close to both Sloane Square (0.3 miles) and Victoria Station (0.4 miles). The popular Saturday farmer's market on Pimlico Green is located at the end of the road as well as the popular French restaurant La Poule au Pot.





ACCOMMODATION & AMENITIES

- 4 reception rooms
- 3 bedroom suites
- Cloakroom
- Outside office building with shower room
- Separate staff bedroom suite
- Separate guest flat with kitchenette and bedroom suite
- Mature garden measuring 110 ft (33 m)
- Grade I Listed

Terms

Listing

Grade I

Tenure

Freehold

Local Authority

City of Westminster

Price

Upon Application

Gross Internal Area (Approx.)

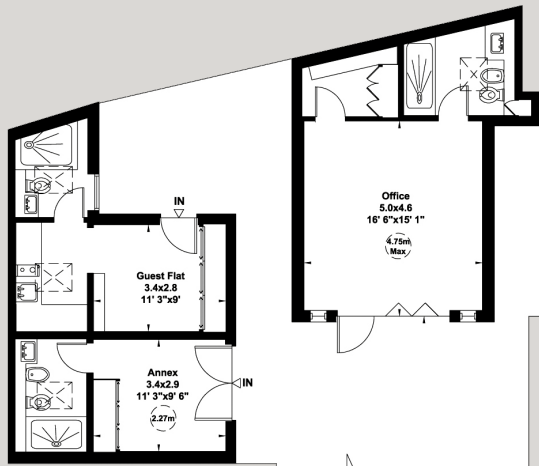
3,871 sq.ft. | 360 sq.m. Including Outside Storage
3,857 sq.ft. | 358 sq.m. Excluding Outside Storage

Office and Guest Flat

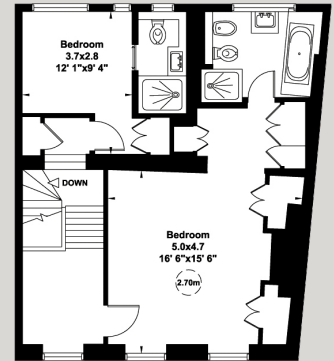
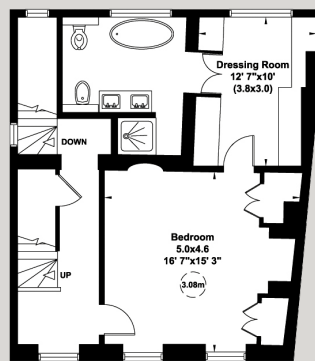
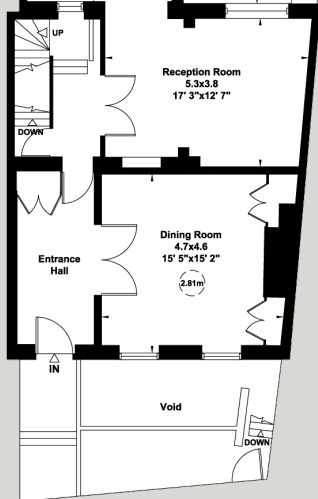
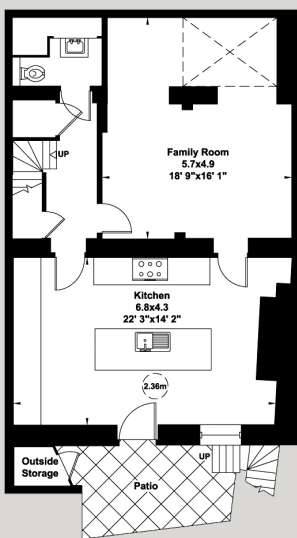
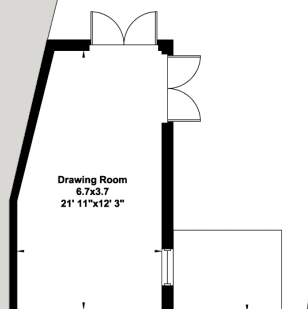
Gross Internal Area (Approx.)
767 sq.ft. | 71 sq.m.

House

Gross Internal Area (Approx.)
3,104 sq.ft. | 288 sq.m.



Garden
33.8x6.5
110' 10"x21' 4"



Lower Ground Floor

Upper Ground Floor

First Floor

Second Floor



Viewing: Strictly by appointment with Savills.

Important notice

Savills, their clients and any joint agents give notice that: 1: They are not authorised to make or give any representations or warranties in relation to the property either here or elsewhere, either on their own behalf or on behalf of their client or otherwise. They assume no responsibility for any statement that may be made in these particulars. These particulars do not form part of any offer or contract and must not be relied upon as statements or representations of fact. 2: Any areas, measurements or distances are approximate. The text, photographs and plans are for guidance only and are not necessarily comprehensive. It should not be assumed that the property has all necessary planning, building regulation or other consents and Savills have not tested any services, equipment or facilities. Purchasers must satisfy themselves by inspection or otherwise. 19/10/10 ML

Savills Knightsbridge
knightsbridge@savills.com
020 7581 5234

Savills Sloane Street
sloanestreet@savills.com
020 7730 0822

savills.co.uk

