



Brand new development of 11 spectacular apartments in a beautiful part of the 3 Valleys.

Residence Le K2, St Martin de Belleville, 3 Valleys

From €390,0000 to €1,625,000



- *New development of 11 exclusive apartments*
- *2 to 5 bedrooms and bathrooms*
- *Located in charming hamlet of Le Bettex*
- *Direct access to 3 Valleys ski region*
- *High quality build with traditional façade*
- *Potential to recoup 20% VAT, subject to conditions*
- *Communal swimming pool*
- *Covered parking and ski locker*

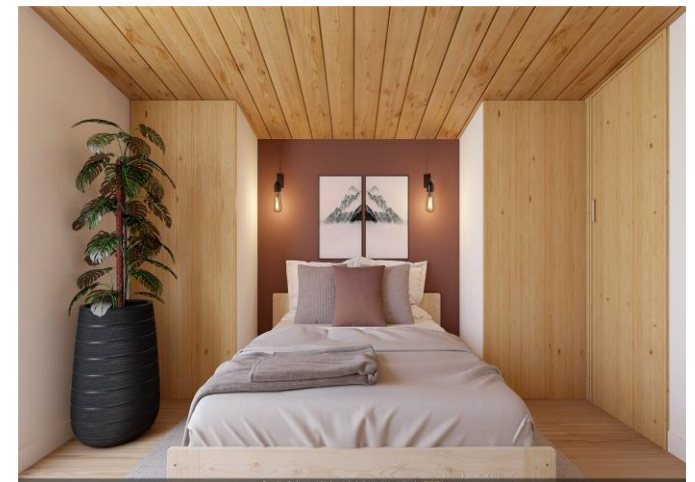
About this property

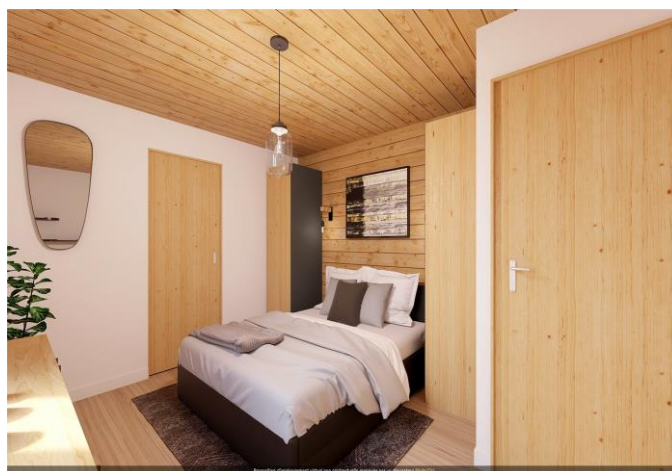
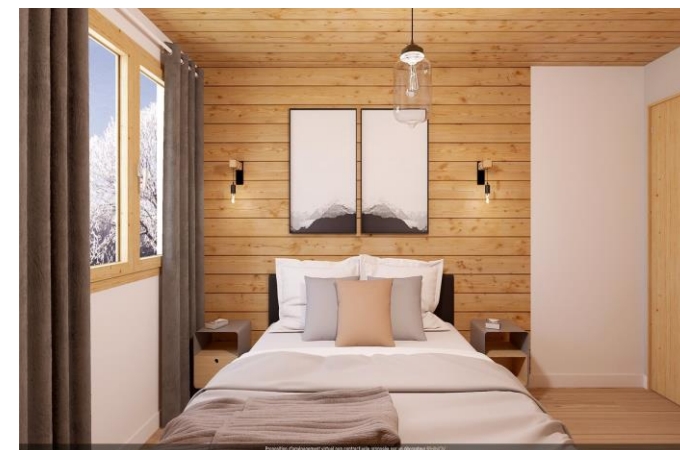
K2 Residences is a brand new development of luxurious apartments situated in the charming village of Le Bettex of St Martin de Belleville with direct access to the 3 Valleys ski area by chairlift. The project stands in an enviable position with magnificent mountain views south towards Les Menuires and Val Thorens and west across the Valley.

Built with high quality local materials the apartments will have a modern and stylish feel, while retaining traditional Savoyarde features of old wood and stone. The developer will allow a degree of flexibility for an incoming purchaser to choose the internal style for their apartment. There is also the opportunity to recoup 20% of VAT paid, subject to the rental conditions of the 'para hotelier' scheme, however renting out is not obligatory.

Each apartment has a ski locker and there is a covered swimming pool which is shared by the apartment owners. One covered parking space is sold with each apartment, with the option of purchasing additional spaces by separate negotiation.

Please contact Savills for more information. Please note that agency fees are paid for by the vendor.





Residence Le K2, St Martin de Belleville, 3 Valleys
Gross Internal Area 538 - 1701 sq ft, 50 - 158 m²



savills

savills.co.uk

Guy Murdoch

Savills Ski

+44 (0) 20 7016 3740

gmurdoch@savills.com



Important notice Savills, its clients and any joint agents give notice that 1: They are not authorised to make or give any representations or warranties in relation to the property either here or elsewhere, either on their own behalf or on behalf of their client or otherwise. They assume no responsibility for any statement that may be made in these particulars. These particulars do not form part of any offer or contract and must not be relied upon as statements or representations of fact. 2: Any areas, measurements or distances are approximate. The text, photographs and plans are for guidance only and are not necessarily comprehensive. It should not be assumed that the property has all necessary planning, building regulation or other consents and Savills have not tested any services, equipment or facilities. Purchasers must satisfy themselves by inspection or otherwise. 20200207EMNN

