



BEAUTIFUL SKI-IN, SKI-OUT APARTMENT IN THE HIGH ALTITUDE RESORT OF OBERTAUERN.

STEINADLER APARTMENT
OBERTAUERN

Guide Price €299,000



OBERTAUERN, SALZBURGERLAND, AUSTRIA

Ski-in, ski-out apartment • Wonderful high altitude ski region • 20m walk to the gondola station • Newly built wellness area • Salzburg airport 90km • 2 Bedrooms • 1 Bathrooms • 646 sq ft (60 m²)

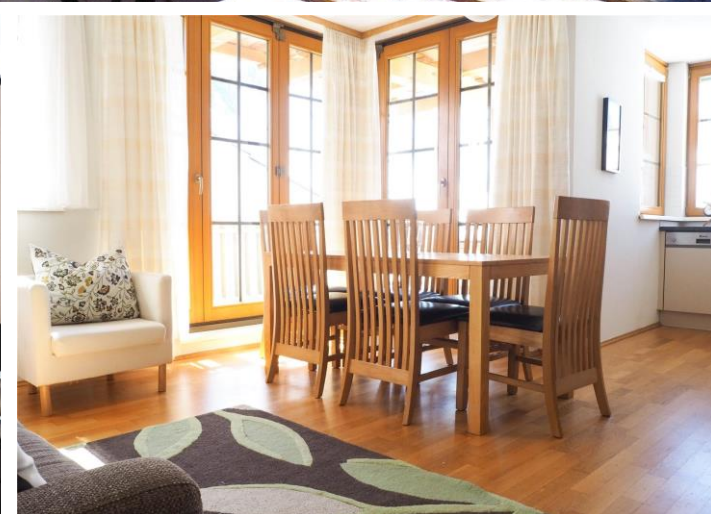
Description

A very rare opportunity to purchase a luxury ski-in, ski-out apartment in Obertauern. The Steinadler apartment has 2 bedrooms and a stunning south facing terrace.

Steinadler is ideally located adjacent to the ski gondola station. With the entrance to the gondola station just twenty metres away. The apartments offer fantastic views of the mountains and the ski slopes.

The development was built in Autumn 2009 and contains a beautifully equipped brand new wellness centre, restaurant/bar and reception area. There are also private owners storage rooms, a ski room and a large underground car parking area. The apartments all have beautiful solid oak furniture and have floor to ceiling glass windows providing a contemporary feel whilst the building remains in the local architectural style.

Managed by a local management company, it generates an attractive rental yield of circa €15,000 per annum, making it an appealing lifestyle/investment purchase.





Savills Ski

Guy Murdoch
gmurdoch@savills.com
+44 (0) 20 7016 3740

savills.co.uk

Savills, their clients and any joint agents give notice that: 1. They are not authorised to make or give any representations or warranties in relation to the property either here or elsewhere, either on their own behalf or on behalf of their client or otherwise. They assume no responsibility for any statement that may be made in these particulars. These particulars do not form part of any offer or contract and must not be relied upon as statements or representations of fact. 2. Any areas, measurements or distances are approximate. The text, images and plans are for guidance only and are not necessarily comprehensive. It should not be assumed that the property has all necessary planning, building regulation or other consents and Savills have not tested any services, equipment or facilities. Purchasers must satisfy themselves by inspection or otherwise.

