



AN EXCLUSIVE PENTHOUSE WITH 360 DEGREE VIEWS.

PENTHOUSE
KITZBUHEL

Guide Price €3,200,000



KITZBUHEL, TIROL, AUSTRIA

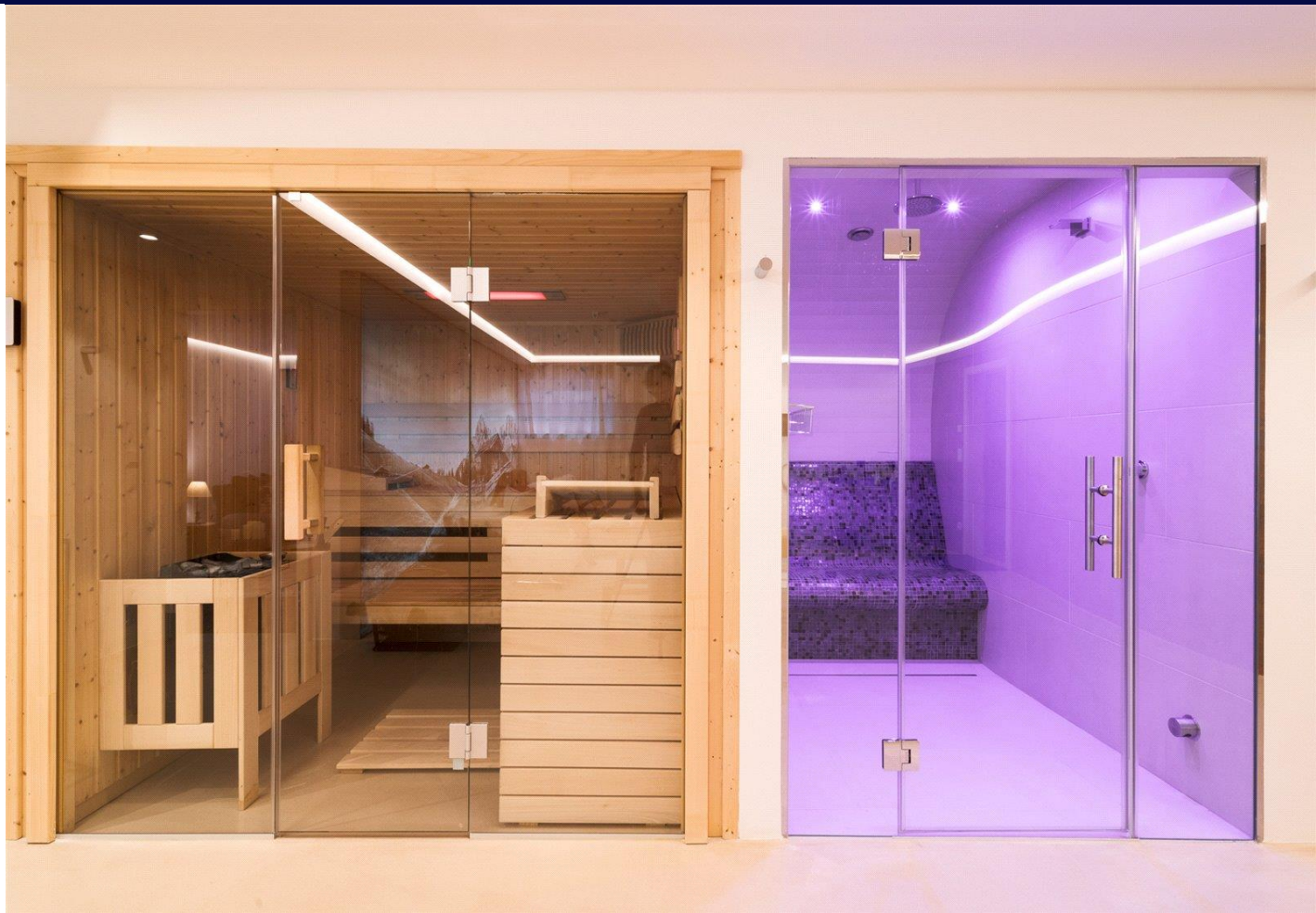
An exclusive penthouse with panoramic views from Wilder Kaiser to Hahnenkamm • Wellness area with sauna, steam room and relaxation area • 200m² rooftop terrace with BBQ, covered area and Jacuzzi • Two open fireplaces • Two underground parking spaces • 2 Bedrooms • 2 Bathrooms • 2906 sq ft (270 m²)

Situation

Located at the foot of the Wilder Kaiser, Kitzbühel it is famous for both its skiing and lifestyle and is just 75 km from Salzburg airport and 97 km from Innsbruck airport.

Kitzbühel has a status as a playground for the rich and famous because of the attractive, picture perfect town and the skiing surrounding the resort. The ski area is world renowned and hosts the annual World Cup alpine ski race, the Hahnenkamm. It is regarded as the most demanding race course on the World Cup circuit. The resort is also home to the famous Kitzbühel Horn Mountain. Recent lift improvements have made Kitzbühel a wonderful skiing experience. It truly is a resort which caters for all levels of skier.

Kitzbühel is also a delightful summer destination offering a wide range of outdoor activities such as water sports on the Schwarzsee Lake, a superb range of walks, mountain biking, horse riding, a magnificent 18-hole golf course, to name but a few.



Description

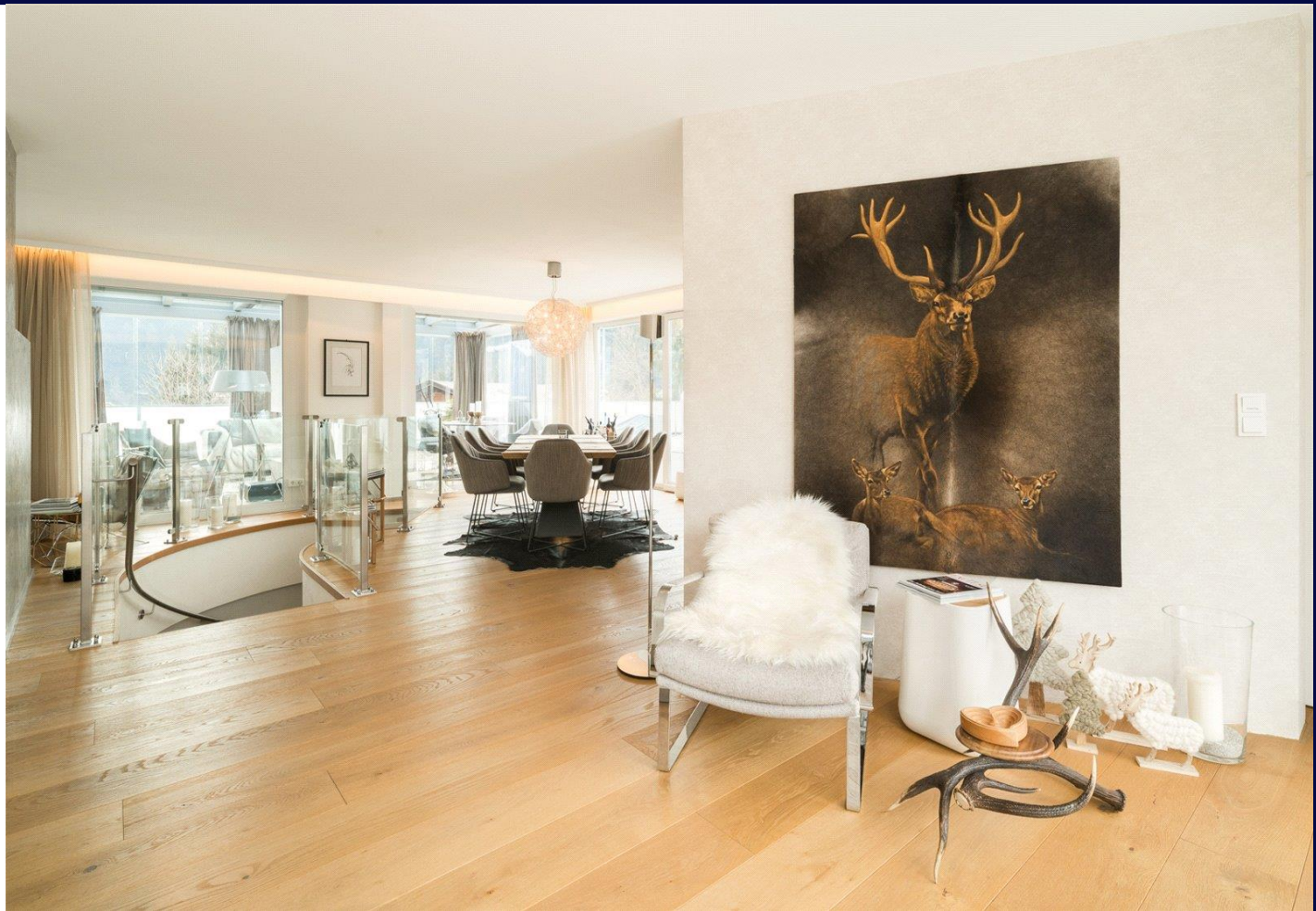
This high-end penthouse enjoys a sunny location at the foot of Kitzbüheler Horn. It offers unobstructed 360 degree panoramic views from Wilder Kaiser via Kitzbüheler Horn all the way to Hahnenkamm.

This deluxe penthouse is accessible via private elevator leading directly into the 160m² interior. The unit boasts a 90m² open-plan living/dining area with Gaggenau kitchen, open fireplace, the master suite with walk-in wardrobe and a large en-suite bathroom, and another bedroom with en-suite bathroom and Kaiser views. The entrance is located on the ground floor and features a reclaimed wood wardrobe.

A 200m² rooftop terrace with BBQ, Jacuzzi and a covered area.

The basement accommodates a 108m² wellness area with sauna, steam bath, shower, WC and relax area. The storage and utility rooms are also located in the basement.

Included is 2 underground parking spaces and a storage room.





Savills Ski
 Guy Murdoch
 gmurdoch@savills.com
 +44 (0) 20 7016 3740

savills.co.uk

Savills, their clients and any joint agents give notice that: 1. They are not authorised to make or give any representations or warranties in relation to the property either here or elsewhere, either on their own behalf or on behalf of their client or otherwise. They assume no responsibility for any statement that may be made in these particulars. These particulars do not form part of any offer or contract and must not be relied upon as statements or representations of fact. 2. Any areas, measurements or distances are approximate. The text, images and plans are for guidance only and are not necessarily comprehensive. It should not be assumed that the property has all necessary planning, building regulation or other consents and Savills have not tested any services, equipment or facilities. Purchasers must satisfy themselves by inspection or otherwise.

