

**CAMBRIDGE GATE**

**REGENTS PARK**

◆ ————— ◆

## AN ELEGANT, FIVE BEDROOM, DUPLEX APARTMENT IN REGENT'S PARK LOCATED IN ONE OF THE MOST EXCLUSIVE ADDRESSES IN THE CROWN ESTATE.

This duplex apartment situated within a handsome French second empire style terrace built c. 1875, located opposite Regent's Parks 487 acres of royal parkland and gardens.

The property consists of a reception hall, cloak room & WC, drawing room, family room, kitchen/breakfast room, study principal bedroom suite with dressing room and bathroom, as well as 4 further bedrooms (Three of which have en suite facilities), gym & sauna, utility room, garage, landscaped patio garden.











## LOCATION

Cambridge Gate can be found on the Eastern side of Regent's Park's outer circle, between Park Square East and Cambridge Terrace.

Regent's Park itself offers a wide range of recreational facilities, including the Zoological Gardens, the open air theatre, Queen Mary's Gardens, the boating lake and tennis courts.

The nearest Underground stations are Great Portland Street (Circle and Metropolitan Lines), which is approximately 300 metres walk, and Regent's Park (Bakerloo Line) which is also within approximately 300 metres walk.



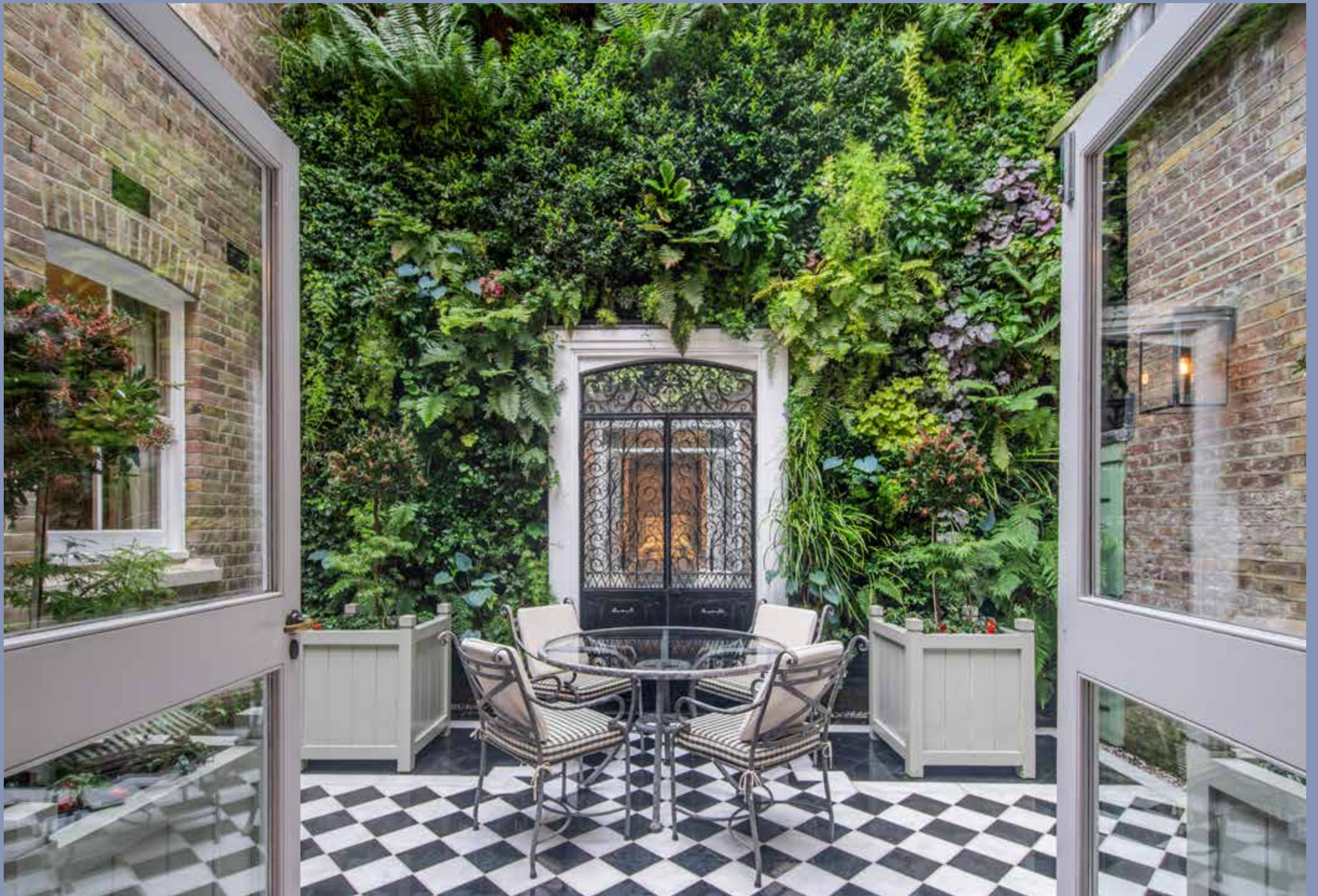
















## KEY FEATURES

- Grand reception rooms
- Beautiful landscaped patio garden
- Access to Park Square Communal Gardens
- Mews access to rear
- Residents parking
- 24 hour porter

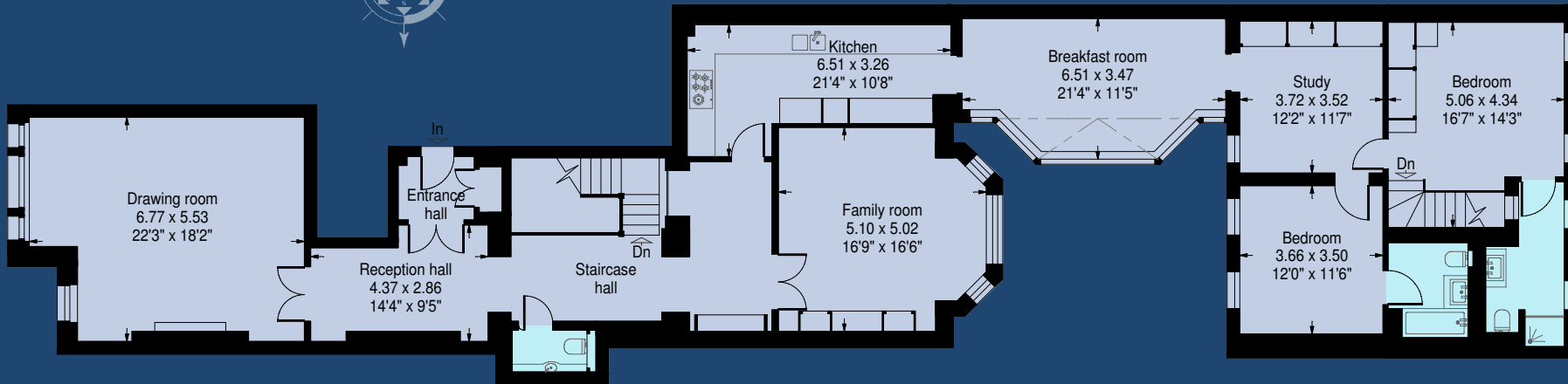
## TERMS

TENURE Leasehold, approximately 122 years remaining

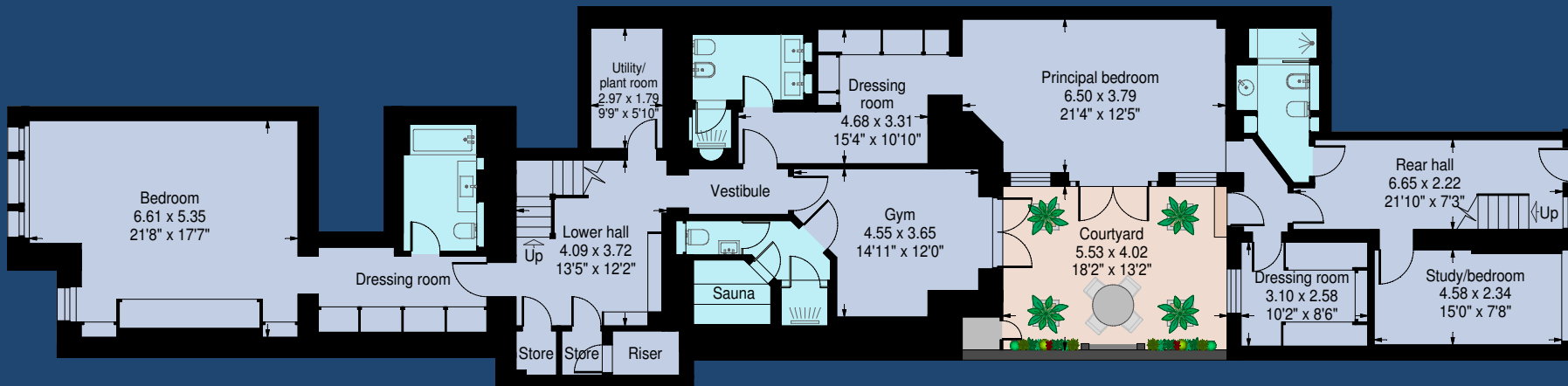
LOCAL AUTHORITY London Borough of Camden

PRICE ON APPLICATION

Gross internal area (approx.)  
407.7 sq mts (4,388 sq ft)



Ground Floor



Lower Ground Floor

Viewing: Strictly by appointment with Savills.

Important notice

Savills, their clients and any joint agents give notice that: 1: They are not authorised to make or give any representations or warranties in relation to the property either here or elsewhere, either on their own behalf or on behalf of their client or otherwise. They assume no responsibility for any statement that may be made in these particulars. These particulars do not form part of any offer or contract and must not be relied upon as statements or representations of fact. 2: Any areas, measurements or distances are approximate. The text, photographs and plans are for guidance only and are not necessarily comprehensive. It should not be assumed that the property has all necessary planning, building regulation or other consents and Savills have not tested any services, equipment or facilities. Purchasers must satisfy themselves by inspection or otherwise. 21/06/29 GC



Savills St John's Wood  
15 St John's Wood High Street  
London NW8 7NG  
stjohnswoodsales@savills.com  
020 3043 3619  
savills.co.uk

