



A BEAUTIFUL SECOND FLOOR LATERAL APARTMENT SET WITHIN A  
HANDSOME VICTORIAN TERRACE

**Cambridge Gate, Regent's Park, London, NW1**

£8,000,000 Leasehold (approximately 132 years remaining)



- Second floor apartment • Air Conditioning • Balcony
- Residents Parking and garage • Wonderful and open Westerly views across Regent's Park • 24 Resident Porter
- Access to Park Square Gardens

### About this property

A beautiful second floor apartment set within this handsome Victorian terrace, built circa 1875. The apartment retains excellent proportions with wonderful and open westerly views over the trees and gardens of Regent's Park. The property has a fantastic drawing room and dining room facing the park. To the rear of the property there is a sumptuous principal bedroom suite and two further guest suites. Further benefits include 24 hour portage, CCTV and two attractive balconies.

### Local Information

Cambridge Gate can be found on the Eastern side of Regent's Park's outer circle, between Park Square East and Cambridge Terrace.

Regent's Park itself offers a wide range of recreational facilities, including the Zoological Gardens, the open air theatre, Queen Mary's Gardens, the boating lake and tennis courts.

The nearest Underground stations are Great Portland Street (Circle and Metropolitan Lines), which is approximately 300 meters walk, and Regent's Park (Bakerloo Line) which is also within approximately 300 meters walk.

### Tenure

Leasehold

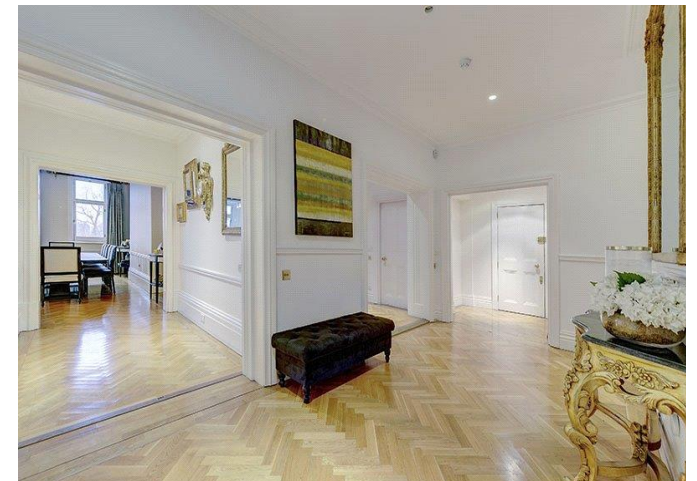
### Local Authority

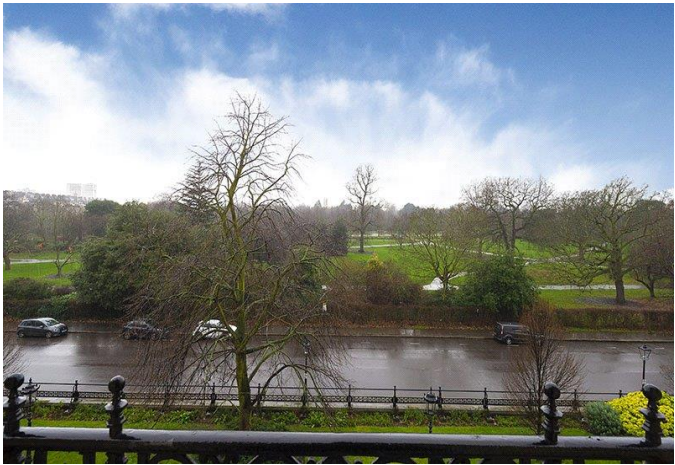
London Borough of Camden

### Viewing

All viewings will be accompanied and are strictly by prior arrangement through Savills St. John's Wood & Regents Park Office.

Telephone: +44 (0) 20 3043 3600.





**Cambridge Gate, Regent's Park, London, NW1**  
**Gross Internal Area 3,236 sq ft, 300.6 m<sup>2</sup>**

**Zach Madison**  
St. John's Wood & Regents Park  
**+44 (0) 20 3043 3600**  
zmadison@savills.com

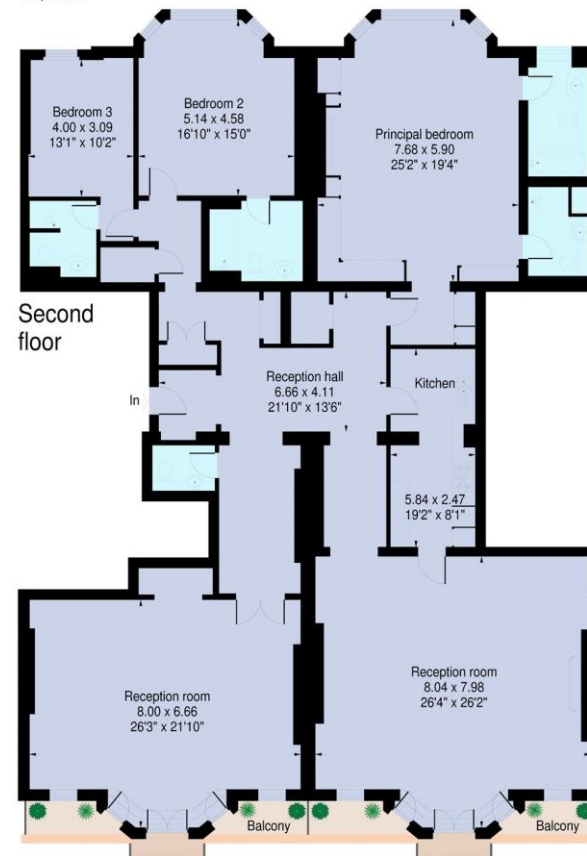


savills

savills.co.uk

### Cambridge Gate, London NW1

Gross internal area (approx):  
303.6 sq.m. (3268 sq.ft.)  
For identification purposes only. Not to scale.  
Proplan UK



**Important Notice** Savills, its clients and any joint agents give notice that 1: They are not authorised to make or give any representations or warranties in relation to the property either here or elsewhere, either on their own behalf or on behalf of their client or otherwise. They assume no responsibility for any statement that may be made in these particulars. These particulars do not form part of any offer or contract and must not be relied upon as statements or representations of fact. 2: Any areas, measurements or distances are approximate. The text, photographs and plans are for guidance only and are not necessarily comprehensive. It should not be assumed that the property has all necessary planning, building regulation or other consents and Savills have not tested any services, equipment or facilities. Purchasers must satisfy themselves by inspection or otherwise. 20210212SNSA

