

# RYDERS TERRACE

—  
London NW8



savills

A truly unique interior designed mews house in St. John's Wood





Ryders Terrace is a quaint and secluded mews nestled between Blenheim Terrace and Carlton Hill in St. John's Wood. The property is approximately 0.7 miles from St John's Wood High Street and its wide variety of amenities. It is a short walk from the highly regarded American School in London and just a mile from the wide open green spaces of Regents Park. The nearest tube stations are St John's Wood (Jubilee Line) and Maida Vale (Bakerloo Line), both of which are approximately half a mile away.



A very rare opportunity to acquire a truly unique property. Traditional pretty mews cottage on the outside but ultra contemporary on the inside, the house has been architecturally designed and is in immaculate condition throughout.

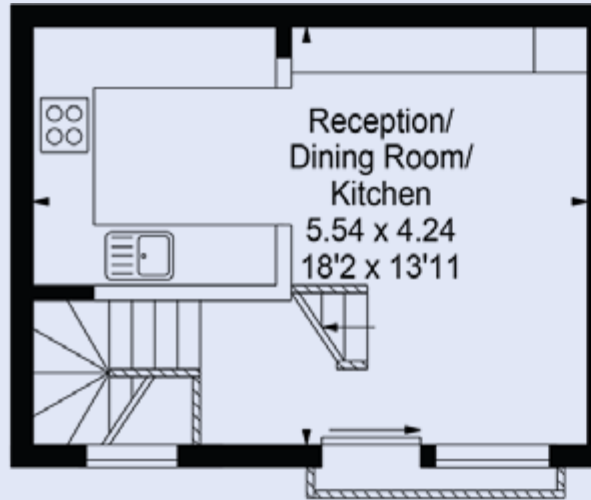
Accommodation is arranged over three main floors, topped by a stunning galleried study area. The first floor comprises a bright and spacious reception room with double-height vaulted ceiling and electric skylights. The open plan kitchen features acid etched glass cabinet doors, Quooker tap, water filters and wine fridge. The principal bedroom and en-suite shower room are situated on the ground floor and include fitted wardrobes by Neatsmith with Italian lacquer doors. And at the basement level is a comfortable TV / reception room with guest WC.

Additional features include a French oak and glass staircase, underfloor heating and whole-house MVHR system. Every floor is wired for sound and the property is fully automated with a Control4 home automation system controlling all audio, video, lighting, heating, networking, CCTV and security systems.

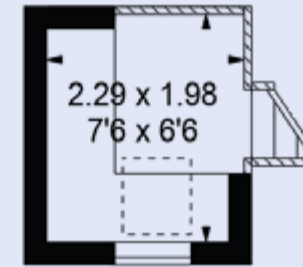
Local Authority: City of Westminster

Tenure: Freehold

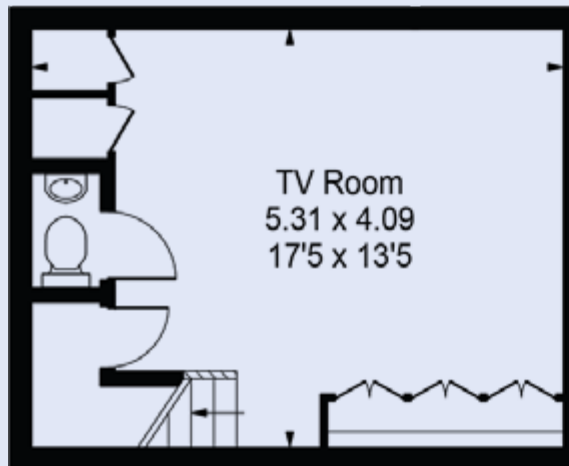
Price: On Application



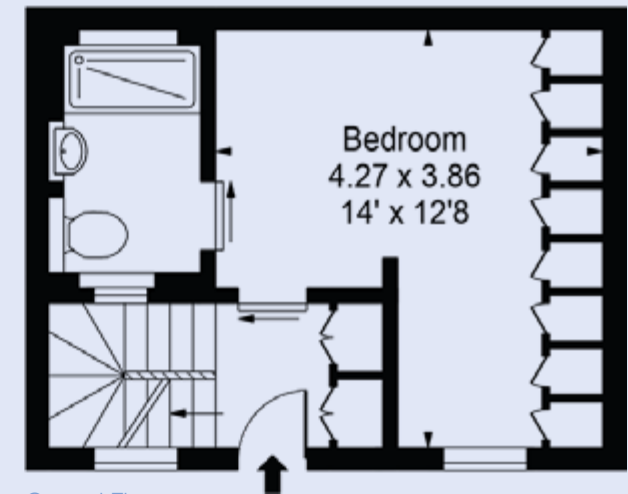
First Floor



Second Floor

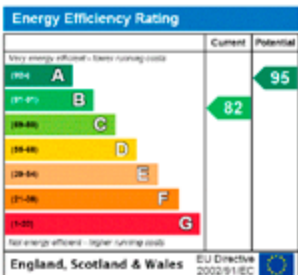


Basement



Ground Floor

Gross Internal Area (Approx.)  
73.49 sq m/791 sq ft



Viewing: Strictly by appointment with Savills.

Important notice

Savills, their clients and any joint agents give notice that: 1: They are not authorised to make or give any representations or warranties in relation to the property either here or elsewhere, either on their own behalf or on behalf of their client or otherwise. They assume no responsibility for any statement that may be made in these particulars. These particulars do not form part of any offer or contract and must not be relied upon as statements or representations of fact. 2: Any areas, measurements or distances are approximate. The text, photographs and plans are for guidance only and are not necessarily comprehensive. It should not be assumed that the property has all necessary planning, building regulation or other consents and Savills have not tested any services, equipment or facilities. Purchasers must satisfy themselves by inspection or otherwise. 20/01/11 ML



Savills St John's Wood  
15 St John's Wood High Street  
London NW8 7NG  
stjohnswoods@savills.com  
020 3043 3619  
savills.co.uk

savills