



A Nash terraced residence set on the South East Corner of Regent's Park

Albany Street, London, NW1

£4,150,000 Leasehold



Marble Fireplaces • Bespoke joinery • Italian marble
• Marble in all bathrooms • Bespoke Kitchen • Original
Georgian staircase • Engineered wood flooring
• Designer light fixtures • Terrace • Secure Underground
Parking • Access to Private Gardens of Park Square and
Park Crescent

Local Information

Albany Street is situated on the South East corner of Regents Park and offers easy access to Great Portland Street Tube Station, Regents Park and the West End. There is also access to the private residence gardens in Park Square and Park Crescent.

About this property

A Nash terraced residence (171.76sq m/1,850sq ft with a secure underground parking space set on the South East Corner of Regent's Park. The house is arranged over four floors and provides well-planned family accommodation with generous entertaining space on the ground and first floors, an impressive principal bedroom suite with dressing rooms and bathrooms, two further en-suite bedrooms. The house further benefits from a West facing terrace off the study. There is also access to the private residence gardens in Park Square and Park Crescent.

Tenure

Leasehold

Local Authority

Camden, London

Energy Performance

EPC Rating = Exempt

Viewing

All viewings will be accompanied and are strictly by prior arrangement through Savills St. John's Wood & Regents Park Office.

Telephone: +44 (0) 20 3043 3600.





Albany Street, Regent's Park, London, NW1
Gross Internal Area 1850 sq ft, 171.9 m²

Zach Madison
St. John's Wood & Regents Park
+44 (0) 20 3043 3600
zmadison@savills.com

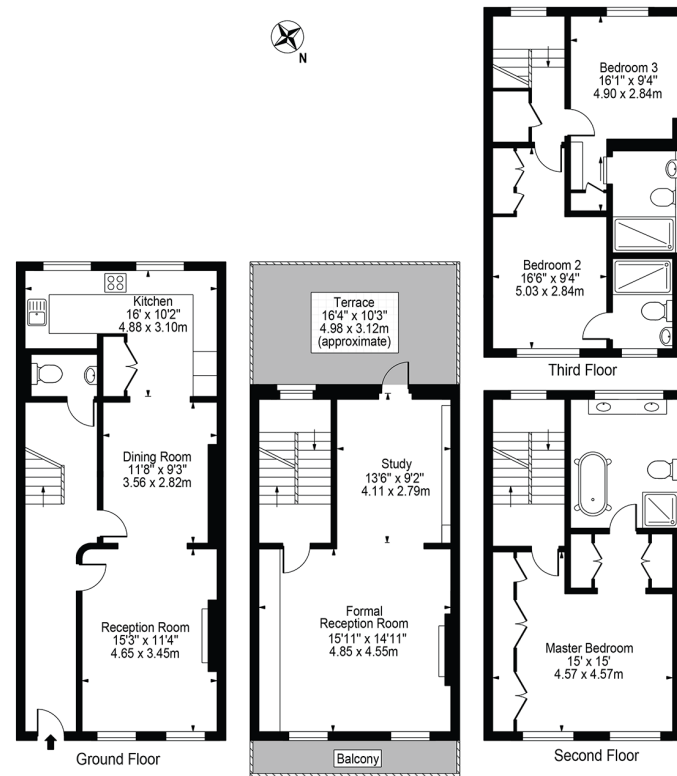


savills

savills.co.uk

Albany Street

Approx. Gross Internal Area 1850 Sq Ft - 171.87 Sq M



For Illustration Purposes Only - Not To Scale

This floor plan should be used as a general outline for guidance only and does not constitute in whole or in part an offer or contract.
Any intending purchaser or lessee should satisfy themselves by inspection, searches, enquiries and full survey as to the correctness of each statement.
Any areas, measurements or distances quoted are approximate and should not be used to value a property or be the basis of any sale or let.

Important notice Savills, its clients and any joint agents give notice that 1: They are not authorised to make or give any representations or warranties in relation to the property either here or elsewhere, either on their own behalf or on behalf of their client or otherwise. They assume no responsibility for any statement that may be made in these particulars. These particulars do not form part of any offer or contract and must not be relied upon as statements or representations of fact. 2: Any areas, measurements or distances are approximate. The text, photographs and plans are for guidance only and are not necessarily comprehensive. It should not be assumed that the property has all necessary planning, building regulation or other consents and Savills have not tested any services, equipment or facilities. Purchasers must satisfy themselves by inspection or otherwise. 20200312ISBY

