



**A STUNNING GRADE I LISTED NASH RESIDENCE WITH VIEWS ACROSS REGENT'S  
PARK AND THE BOATING LAKE.**

HANOVER TERRACE  
REGENT'S PARK, LONDON, NW1

**Guide Price £19,750,000 - Leasehold**





Views across Regent's Park • Leasehold  
• Separate Mews house with garage  
• Impressive Volumes • Interior Designed

6 Bedrooms • 5 Bathrooms • 8 Receptions

---

### Description

An imposing Grade I listed house and mews (6,760 sq ft) in one of Regent Park's most sought after Nash terraces with a stunning south-west facing garden. The property offers spacious accommodation and has been meticulously refurbished throughout with an exceptional level of finishing and presentation. This magnificent Georgian London home is fit for the 21st century and offers family, guest and staff accommodation. The views from the upper floors spread across Regent's Park and the boating lake.

### Location

Hanover Terrace is on the western side of Regent's Park's outer circle, between Hanover Gate and Terrace The London Business School. Regent's Park itself offers a wide range of recreational facilities, including the Zoological Gardens, the open air theatre, Queen Mary's Gardens, the boating lake and tennis courts. The nearest Underground station is Baker Street (Circle & District, Metropolitan, Jubilee, Bakerloo and Hammersmith & City Lines), which is approximately 800 metres walk.

### Viewing

Strictly by appointment with Savills.

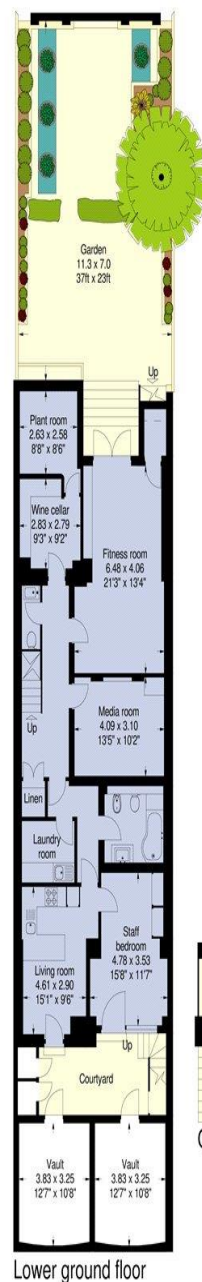




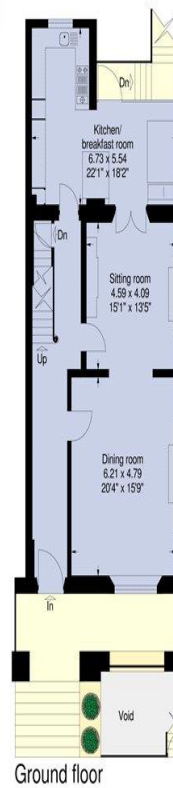


## 2 Hanover Terrace, Regents Park, London NW1

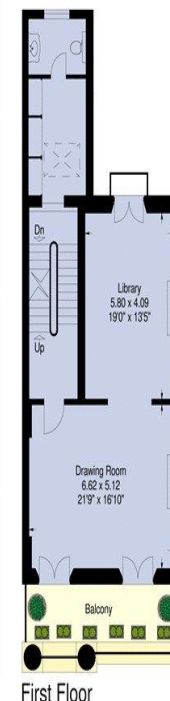
Gross internal area (approx):  
House - 457 sq.mts (5027 sq.ft.)  
Mews (including games room) - 134 sq.mts (1439 sq.ft.)  
Vaults - 27 sq.mts (291 sq.ft.)  
Total - 628 sq.mts (6768 sq.ft.)  
Total (excluding garage and vaults) - 572 sq.mts (6157 sq.ft.)  
For identification purposes only. Not to scale.  
Proplan Ltd. ©



Lower ground floor



Ground floor



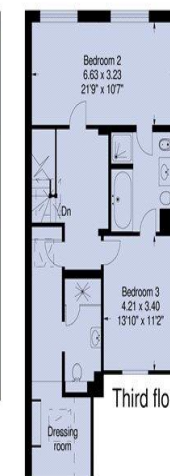
Ground floor  
(Mews house)



First floor  
(Mews house)



Second floor



Third floor

## St. John's Wood & Regents Park

Stephen Lindsay

[slindsay@savills.com](mailto:slindsay@savills.com)

**+44 (0) 20 3043 3600**

**savills.co.uk**

---

Important notice: Savills, their clients and any joint agents give notice that:  
1: They are not authorised to make or give any representations or warranties in relation to the property either here or elsewhere, either on their own behalf or on behalf of their client or otherwise. They assume no responsibility for any statement that may be made in these particulars. These particulars do not form part of any offer or contract and must not be relied upon as statements or representations of fact. 2: Any areas, measurements or distances are approximate. The text, photographs and plans are for guidance only and are not necessarily comprehensive. It should not be assumed that the property has all necessary planning, building regulation or other consents and Savills have not tested any services, equipment or facilities. Purchasers must satisfy themselves by inspection or otherwise. 20190314LEDL