



A three bedroom apartment set within a sought after mansion block  
opposite Regent's Park.

**Hanover Gate Mansions, Park Road, London, NW1**

£1,200,000 Share of Freehold



- A three bedroom ground floor apartment • High ceilings throughout • Porterage • Secure entry system & parking • In close proximity to Regents Park, St. John's Wood & Marylebone

### About this property

This beautifully presented three bedroom apartment is situated on the ground floor of this popular red brick mansion block which is located directly across from Regents Park. Accommodation comprises a spacious reception / dining room, a separate kitchen, a principal bedroom with en suite bathroom, two further bedrooms and a family bathroom. Further benefits include an on-site porter, a secure entry system and 24 hour CCTV.

### Local Information

Hanover Gate Mansions is located opposite the entrance to the open spaces of Regent's Park and provides easy access to the London Business School (approximately 0.4 miles), Baker Street underground station (approximately 0.4 miles) and the amenities of St John's Wood High Street (approximately 0.5 miles away).

### Tenure

Share of Freehold

### Local Authority

City of Westminster

### Energy Performance

EPC Rating = D

### Viewing

All viewings will be accompanied and are strictly by prior arrangement through Savills St. John's Wood & Regents Park Office.

Telephone: +44 (0) 203 043 3600.



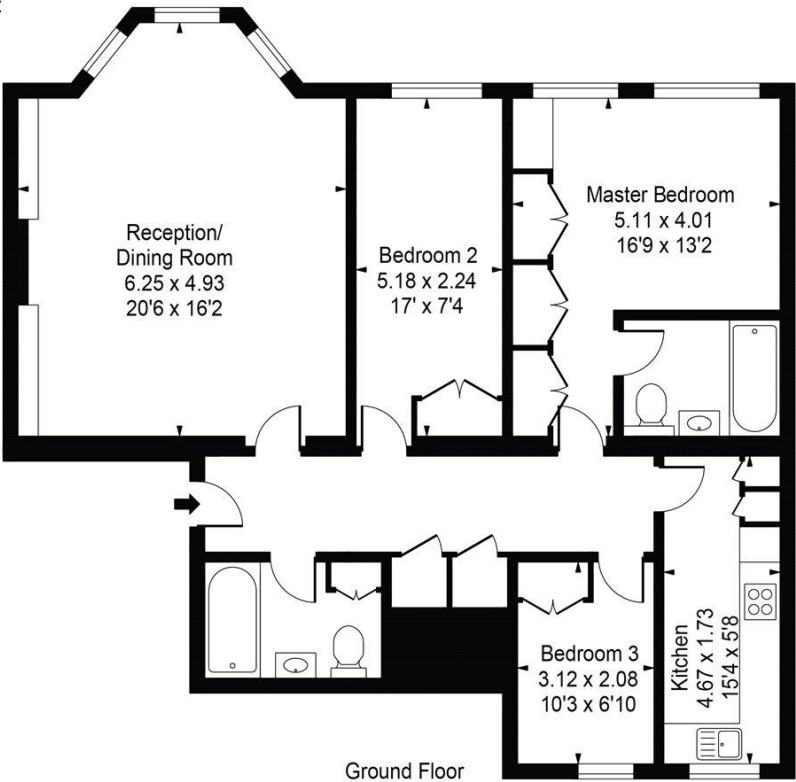


Hanover Gate Mansions, Park Road, London, NW1  
Gross Internal Area 1,035 sq. ft., 96.2 m²

 OnTheMarket.com |  savills | savills.co.uk

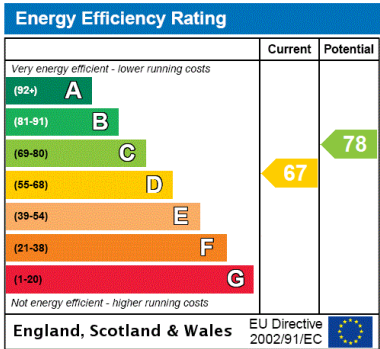
Alicia Lindsay  
St. John's Wood & Regents Park  
+44 (0) 203 043 3600  
alindsay@savills.com

Hanover Gate Mansions  
Gross Internal Area(Approx)  
Total = 96.15 Sq m / 1035 Sq ft



Ground Floor

For Illustration Purposes Only - Not To Scale  
Floorplan by Humble Spy Photography Ltd.  
Produces exclusively for Savills



**Important Notice** Savills, its clients and any joint agents give notice that 1: They are not authorised to make or give any representations or warranties in relation to the property either here or elsewhere, either on their own behalf or on behalf of their client or otherwise. They assume no responsibility for any statement that may be made in these particulars. These particulars do not form part of any offer or contract and must not be relied upon as statements or representations of fact. 2: Any areas, measurements or distances are approximate. The text, photographs and plans are for guidance only and are not necessarily comprehensive. It should not be assumed that the property has all necessary planning, building regulation or other consents and Savills have not tested any services, equipment or facilities. Purchasers must satisfy themselves by inspection or otherwise. 20220301SKRB

