



A penthouse with panoramic views over London's skyline

Cavendish House, 21 Wellington Road, St. John's Wood, London, NW8

£2,850,000 Leasehold (approximately 969 years remaining)



- Open plan reception/dining area
- Grand master bedroom suite with en suite bathroom and a dressing room
- Substantial roof terrace
- Porterage
- Secure Garage

About this property

This bright and airy penthouse apartment is located on the top floor of a desirable mansion block in St John's Wood with a large private roof terrace offering panoramic views over London's skyline. Spanning over approximately 2,058 square feet, the property comprises of a large open plan reception/dining room, a well-proportioned kitchen, two en suite double bedrooms and a grand master suite including a dressing room and large en suite bathroom. There is a large balcony adjoined to the reception room with a staircase leading to a substantial roof terrace with 360 degree views over London. The apartment further benefits from an allocated underground car parking space, a porter and lift access.

Local Information

Cavendish House is conveniently located on Wellington Road NW8, approximately 0.2 miles from St John's Wood High Street and all of its fashionable shops, cafes and boutiques. The apartment is also located approximately 0.2 miles from the famous landmark that is Lords Cricket Ground and just moments from the green open spaces of Regents Park (approximately 0.4 miles) and Primrose Hill (approximately 1 mile).

Tenure

Leasehold (approximately 969 years remaining)

Local Authority

City of Westminster

Energy Performance

EPC Rating = E

Viewing

All viewings will be accompanied and are strictly by prior arrangement through Savills St. John's Wood & Regents Park Office. Telephone: +44 (0) 20 3043 3600.



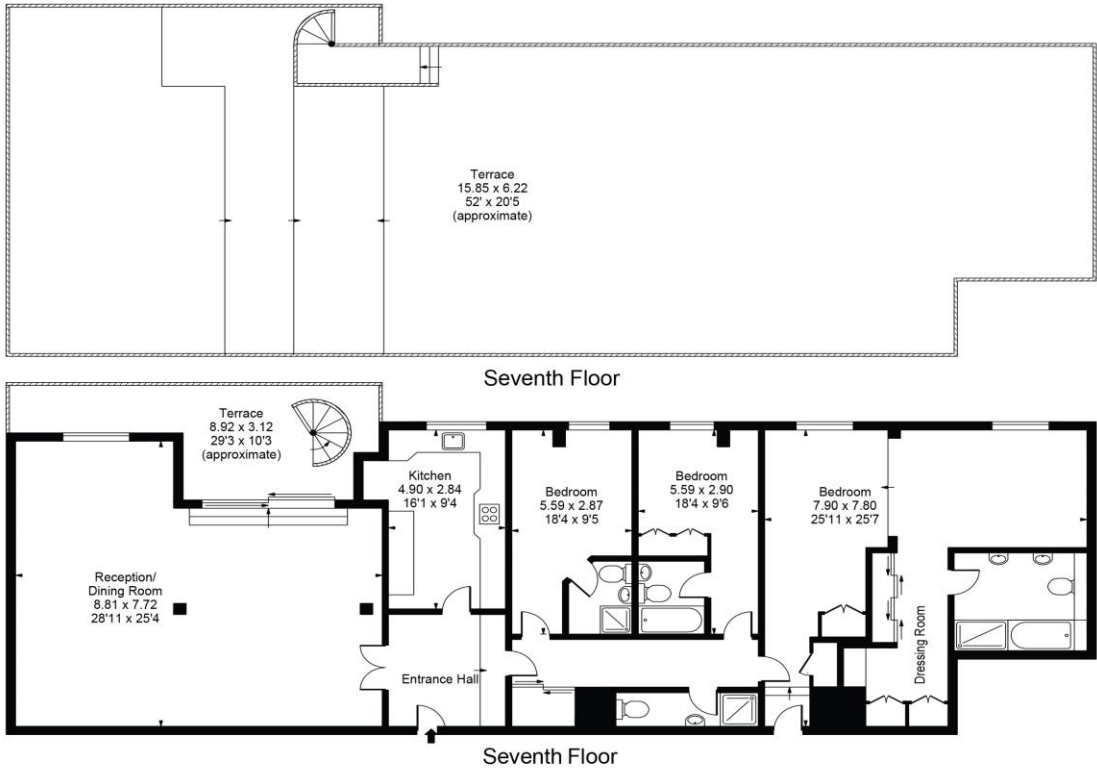


Cavendish House, 21 Wellington Road, St. John's Wood, London, NW8
Gross Internal Area 2058 sq ft, 191.2 m²

Alicia Lindsay
St. John's Wood & Regents Park
+44 (0) 20 3043 3600
alindsay@savills.com

onTheMarket.com | savills | savills.co.uk

Cavendish House
Gross Internal Area(Approx)
Total = 191.19 Sq m / 2058 Sq ft
For Illustration Purposes Only - Not To Scale
Floorplan by Humble Spy Photography Ltd.



Energy Efficiency Rating		
	Current	Potential
Very energy efficient - lower running costs		
(92+) A		
(81-91) B		
(69-80) C		
(55-68) D		65
(39-54) E	49	
(21-38) F		
(1-20) G		
Not energy efficient - higher running costs		
England, Scotland & Wales EU Directive 2002/91/EC		

Important Notice Savills, its clients and any joint agents give notice that 1: They are not authorised to make or give any representations or warranties in relation to the property either here or elsewhere, either on their own behalf or on behalf of their client or otherwise. They assume no responsibility for any statement that may be made in these particulars. These particulars do not form part of any offer or contract and must not be relied upon as statements or representations of fact. 2: Any areas, measurements or distances are approximate. The text, photographs and plans are for guidance only and are not necessarily comprehensive. It should not be assumed that the property has all necessary planning, building regulation or other consents and Savills have not tested any services, equipment or facilities. Purchasers must satisfy themselves by inspection or otherwise. 20210324LEDL

