



CHARMING VILLA LOCATED IN CLOSE PROXIMITY TO SAINT-TROPEZ CENTRE, FEATURING 5 BEDROOMS, GARDEN WITH POOL, TERRACES AND PARKING.

SAINTE-ANNE
SAINT-TROPEZ, VAR COAST, FRENCH RIVIERA, 83990

Rent on Application - Furnished



CHARMING VILLA LOCATED IN CLOSE PROXIMITY TO SAINT-TROPEZ CENTRE, FEATURING 5 BEDROOMS, GARDEN WITH POOL, TERRACES AND PARKING.

SAINTE-ANNE

SAINT-TROPEZ, VAR COAST, FRENCH RIVIERA, 83990

Rent on Application - Furnished

• 5 Bedrooms • 4 Bathrooms • 1 Reception
• Sea view • Garden with pool • Parking facility •
Terraces • 250 sq m • Close to Saint-Tropez centre •

Situation

Saint Tropez is now universally known as one of the most exclusive locations in the world. It all began as a small sleepy fishing village and commercial port.

It was the appearance of Brigitte Bardot in the Saint Tropez that truly pushed the town to the height of its fame and set the trend for it being the ultimate summertime destination for the jet-set where we have our luxury apartments and villas in and around the village.

The contrast between celebrity playground and quiet French community gives Saint Tropez a dual personality and certainly contributes to its charm.

The balance between luxury services and typical French village life suits many of our property owners in the area, granting them a taste of France without renouncing the best in quality and exclusivity.

Description

This charming property offers a sea view over the Gulf of Saint-Tropez and the bell tower of the village.

The ground floor level of the villa features an entrance hall, a guest toilet, a reception and dining room that opens onto the spacious terraces, a fully fitted kitchen and 2 en suite bedrooms.

The first floor level of the villa features a master bedroom with bathroom and a private terrace with sea view, in addition to 2 further bedrooms with an inter-connecting shower room and terrace with sea view.

The lower floor of the villa features a laundry area.

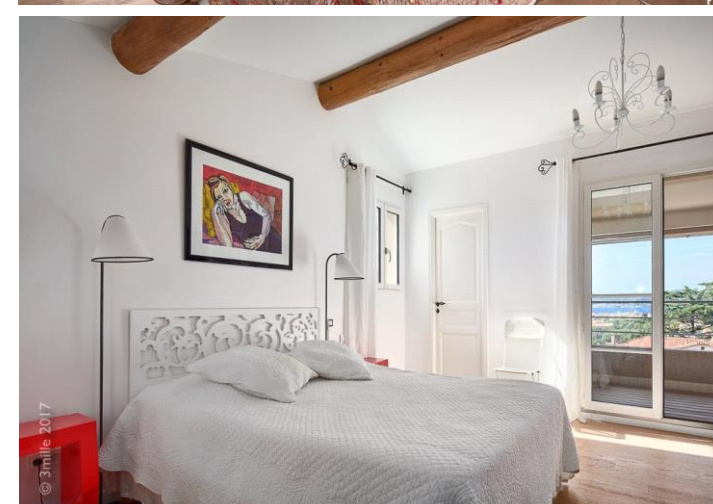
Externally the property includes a swimming pool, an outside shower, terraces and parking.

REF : VSTBE

Viewing

Strictly by appointment with Savills.





*Tenancy paperwork fees including drawing up the tenancy agreement, reference charge for one tenant - £285 (inc VAT). £39 (inc VAT) for each additional tenant, occupant, guarantor reference where required. Inventory check in fee – charged at the start of the tenancy. Third party charge, sliding scale, dependent upon property size and whether furnished/unfurnished/part furnished and the company available at the time. For example. a minimum charge being £69 (inc VAT) for a one bedroom flat in the country and maximum of £582 (inc VAT) for a 6 bedroom London house. Deposit – usually equivalent to six weeks rent, though may be greater subject to mutual agreement. Pets – additional deposit required generally equivalent to two weeks rent. For more details visit Savills.co.uk/fees. **Please be advised that the local area maybe affected by aircraft noise and/or planning applications. We advise you make your own enquiries.** 20180829CABD [STZ180011](#)

Important notice: Savills, their clients and any joint agents give notice that: 1: They are not authorised to make or give any representations or warranties in relation to the property either here or elsewhere, either on their own behalf or on behalf of their client or otherwise. They assume no responsibility for any statement that may be made in these particulars. These particulars do not form part of any offer or contract and must not be relied upon as statements or representations of fact. 2: Any areas, measurements or distances are approximate. The text, photographs and plans are for guidance only and are not necessarily comprehensive. It should not be assumed that the property has all necessary planning, building regulation or other consents and Savills have not tested any services, equipment or facilities. Tenants must satisfy themselves by inspection or otherwise.

Saint Tropez

sainttropez@savills.com

+33 (0)4 94 82 72 78

savills.co.uk