



**CONTEMPORARY 5 BEDROOMS HOUSE LOCATED IN A QUIET DISTRICT WITH SEA VIEW  
OVERLOOKING THE GULF OF ST-TROPEZ.**

LES MARRES

RAMATUELLE, VAR COAST, FRENCH RIVIERA, 83350

**Rent on Application - Furnished**





# CONTEMPORARY 5 BEDROOMS HOUSE LOCATED IN A QUIET DISTRICT WITH SEA VIEW OVERLOOKING THE GULF OF ST- TROPEZ.

---

LES MARRES

RAMATUELLE, VAR COAST, FRENCH  
RIVIERA, 83350

**Rent on Application - Furnished**

- 5 Bedrooms • 5 Bathrooms • 1 Reception
  - Sea view • Residential domain • Swimming pool
  - Pool house • 280 sq m • Parking • Landscaped garden • Pool house •
- 

## Situation

Ramatuelle is a medieval picturesque village huddled up to the hillside in the heart of nature. It is a quiet modest village which contrasts with the trendy celebrity side of its beaches of Pampelonne.

## Description

This magnificent contemporary villa of approximately 280 sq m is situated within a residential domain in Ramatuelle, benefitting from total privacy and views over the Gulf of St Tropez.

The ground floor level of the property features an entrance hall with guest WC, a wide reception room with dining area, a fully fitted kitchen and 3 en suite bedrooms with dressing rooms.

The first floor level of the property features a spacious Master bedroom with en suite bathroom and walk in wardrobe, opening onto a private terrace.

The lower floor level of the property features a fifth bedroom for personnel, a wine cellar and a laundry room.

In addition to a beautiful landscaped gardens of approximately 9000 sq m across 3 levels, a heated swimming pool, pool house, ample terrace spaces.

Air conditioning, parking facilities complete this wonderful villa.

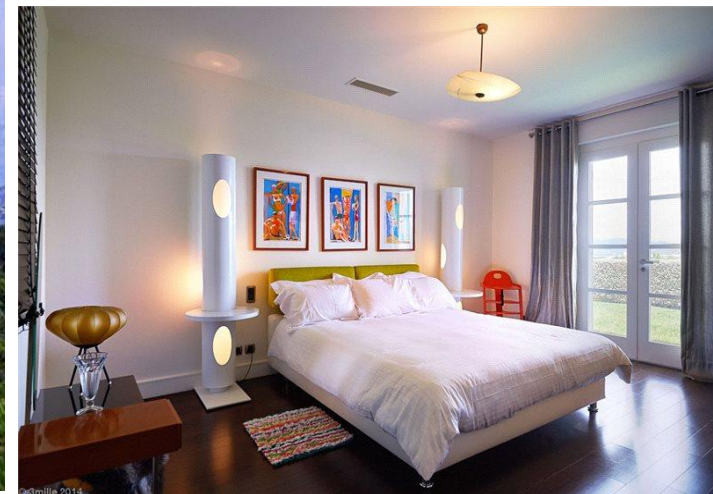
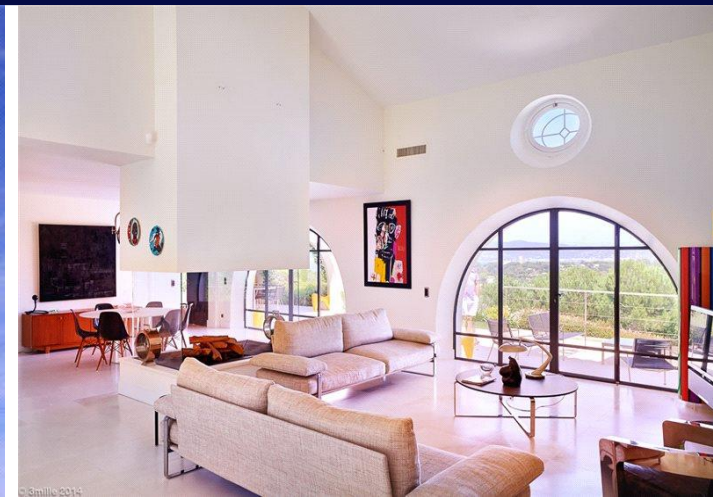
**REF : VRDE**

## Viewing

Strictly by appointment with Savills.







## Saint Tropez

[sainttropez@savills.com](mailto:sainttropez@savills.com)

**+33 (0)4 94 82 72 78**

**savills.co.uk**

\*Tenancy paperwork fees including drawing up the tenancy agreement, reference charge for one tenant - £285 (inc VAT). £39 (inc VAT) for each additional tenant, occupant, guarantor reference where required. Inventory check in fee - charged at the start of the tenancy. Third party charge, sliding scale, dependent upon property size and whether furnished/unfurnished/part furnished and the company available at the time. For example, a minimum charge being £69 (inc VAT) for a one bedroom flat in the country and maximum of £582 (inc VAT) for a 6 bedroom London house. Deposit - usually equivalent to six weeks rent, though may be greater subject to mutual agreement. Pets - additional deposit required generally equivalent to two weeks rent. For more details visit [Savills.co.uk/fees](http://Savills.co.uk/fees). **Please be advised that the local area maybe affected by aircraft noise and/or planning applications. We advise you make your own enquiries.** 20180830CABD LA1140426

Important notice: Savills, their clients and any joint agents give notice that: 1: They are not authorised to make or give any representations or warranties in relation to the property either here or elsewhere, either on their own behalf or on behalf of their client or otherwise. They assume no responsibility for any statement that may be made in these particulars. These particulars do not form part of any offer or contract and must not be relied upon as statements or representations of fact. 2: Any areas, measurements or distances are approximate. The text, photographs and plans are for guidance only and are not necessarily comprehensive. It should not be assumed that the property has all necessary planning, building regulation or other consents and Savills have not tested any services, equipment or facilities. Tenants must satisfy themselves by inspection or otherwise.