



A charming three bedroom flat located on Richmond Hill

Park House, Richmond Hill, Richmond, Surrey, TW10

£1,100,000 Leasehold with a Share of Freehold

savills

Leasehold with a Share of Freehold • Envidable location on Richmond Hill • Charming property • Outside spaces to the front and rear of the property • Ample amounts of natural light

Local Information

Park House is situated on Richmond Hill approximately 0.7 miles from Richmond High Street and approximately 0.3 miles from Richmond Park. Richmond offers the most wonderful variety of local shops, amenities and restaurants which are all easily accessible from this property.

Richmond Train Station is approximately 0.9 miles away, offering a fast Overground service to Waterloo, as well as Underground services via the District Line.

Local schools are considered amongst some of the best in the country.

About this property

This wonderful three bedroom lower ground floor flat occupies an enviable position on Richmond Hill.

The property has a large, open plan reception/dining area with a beautiful bay window allowing ample amounts of natural light to flow through the room. This space is perfect for relaxing or entertaining alike! There is a separate Poggenpohl kitchen which is set just off this room, and also a WC.

The principal bedroom also features a lovely large bay window, as well as an ensuite

bathroom. There are a further two bedrooms and a family bathroom.

The property also benefits from two outside spaces to the front and rear.

Tenure

Leasehold with a Share of Freehold

Local Authority

Richmond Upon Thames

Energy Performance

EPC Rating = D

Viewing

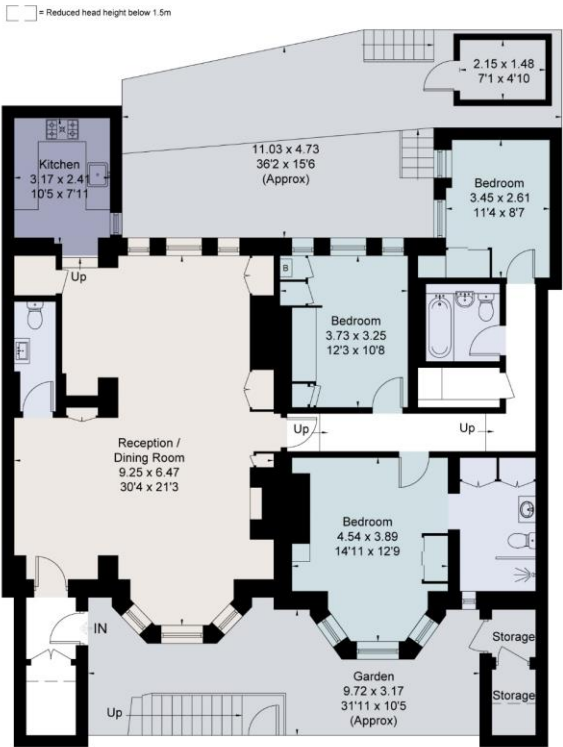
All viewings will be accompanied and are strictly by prior arrangement through Savills Richmond Office.

Telephone: +44 (0) 20 8614 9100.



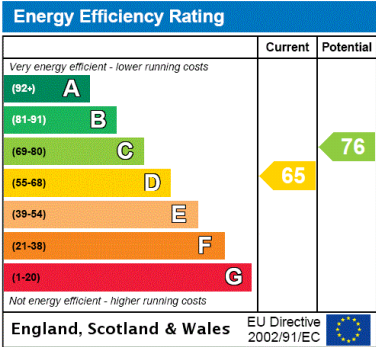


Approximate Area = 134.3 sq m / 1446 sq ft
Outbuildings = 6.8 sq m / 73 sq ft
Total = 141.1 sq m / 1519 sq ft
Including Limited Use Area (3.2 sq m / 34 sq ft)
For identification only. Not to scale.
© Fourwalls



Lower Ground Floor

Surveyed and drawn in accordance with the International Property Measurement Standards (IPMS 2: Residential)
fourwalls-group.com 266176



Important Notice Savills, its clients and any joint agents give notice that 1: They are not authorised to make or give any representations or warranties in relation to the property either here or elsewhere, either on their own behalf or on behalf of their client or otherwise. They assume no responsibility for any statement that may be made in these particulars. These particulars do not form part of any offer or contract and must not be relied upon as statements or representations of fact. 2: Any areas, measurements or distances are approximate. The text, photographs and plans are for guidance only and are not necessarily comprehensive. It should not be assumed that the property has all necessary planning, building regulation or other consents and Savills have not tested any services, equipment or facilities. Purchasers must satisfy themselves by inspection or otherwise. 20201026IMBL

