



An outstanding home with a stunning specification

Spindlewood, 30 The Clump, Rickmansworth, Hertfordshire, WD3 4BQ

Freehold





Grand reception hall • Home office • Drawing room • Kitchen/dining/family room • 7 bedrooms (5 suited) • Cinema room & gym/office • 2 further shower rooms • Beautiful landscaped grounds

Local information

Rickmansworth is a busy commuter town combining an eclectic mix of the old and new plus an excellent selection of restaurants and public houses.

The town offers a comprehensive centre with the food halls of Marks & Spencer, Waitrose and Tesco.

There is also a wide range of sports and recreational facilities including golf courses, tennis courts and the Aquadrome with water sports.

A selection of schools, both private and state are close by.

Rickmansworth and Chorleywood stations offer the Chiltern Turbo to Marylebone and the Metropolitan Line to Baker Street and The City.

The M25 can be accessed at Junction 18, with links to the motorway network and major airports.

About this property

An opportunity to acquire an exceptional and highly specified brand new detached house with 10 years warranty set on a level plot of about 0.5 of an acre in a well regarded residential location.

The property offers stylish and luxurious accommodation to a standard that is rare to find in the local area and incorporates the some of the latest technology.

Spindlewood opens into a stunning hallway through a feature Cotswold stone Portico and there is dark oak suspended central string staircase with LED lighting. Throughout the house is underfloor heating, blue tooth speakers, an impressive lighting system and the house is of a bespoke design by Dusek Architects and the interior by an Italian Designer too.

The design encapsulates modern family living with a stunning kitchen/dining/ family room. The space is flooded with natural light from the sliding doors out to the garden. The Italian kitchen is comprehensively fitted with an excellent range of bespoke wall and floor units which include inside LED lighting together with a large central island and Miele integrated appliances. Off the kitchen is a cooks kitchen by Porcelonosa with fully integrated Siemens appliances. The central dining area overlooks the garden and the family area is lovely space to sit and relax at the end of the day and features a modern fireplace.

From the hallway are bespoke Oak-Milano veneer doors to all the reception rooms. The drawing room is a cosy room with a front aspect and has a feature modern fireplace. A ground floor office or occasional bedroom with en suite shower room is a bonus for extended family and a striking cloakroom completes the ground floor space.



On the first floor is a spacious landing. The principal bedroom suite has a designer dressing room with a range of built-in cupboards with sensor LED lighting and an elegant en suite bathroom. There are four further bedroom suites on this floor with stunning bath/shower rooms.

On the second floor is a great cinema room, a further double bedroom with bathroom and a gym/office with a door to the plant room.

Outside

Spindlewood is set back from the road behind gates and has a block paved driveway with parking for several cars. There is a small garage to the right which is ideal for storage.

Gated side access leads to the rear garden which has a fabulous terrace ideal for entertaining on lovely summer evenings and this leads to lawn with a meandering lit path up the lightly wooded garden which is mainly laid to lawn. There is a lovely gazebo area for relaxing and a shed with light and power at the rear. The overall plot is about 0.5 acres.

Directions

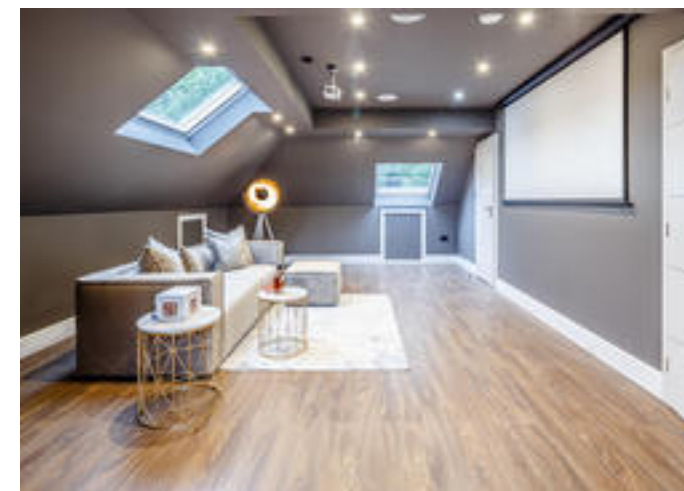
From Rickmansworth Station roundabout take the A404 in the direction of Chorleywood. Proceed along the road past the Royal Masonic School and after about half a mile take the turning on your left into The Clump. Number 30 can be found on the right hand side.

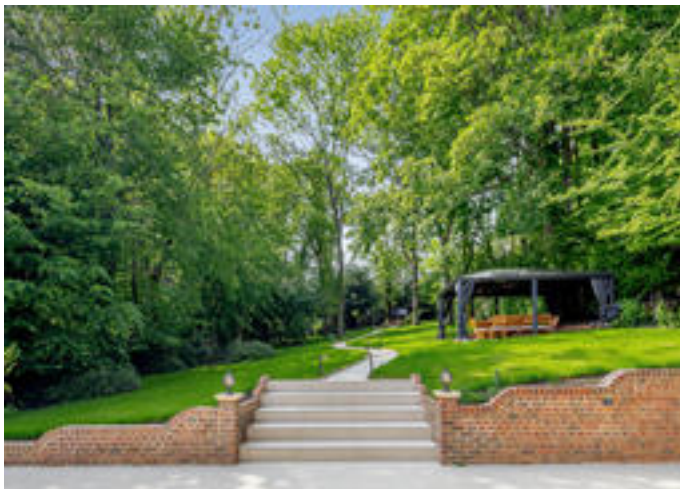
Tenure

Freehold

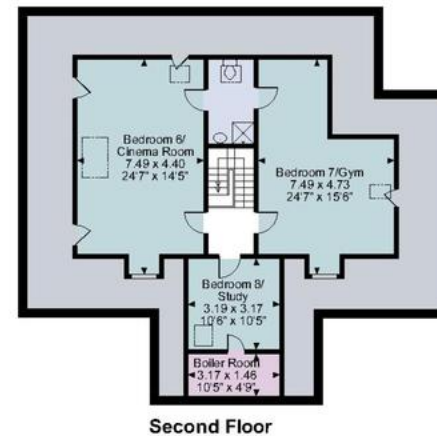
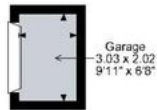
Viewing

Strictly by appointment with Savills

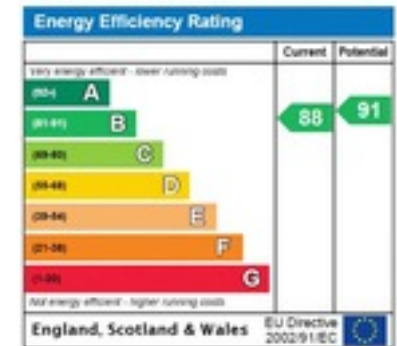




The Clump, Rickmansworth
Main House gross internal area = 4,441 sq ft / 413 sq m
Restricted Head Height gross internal area = 701 sq ft / 65 sq m
Garage gross internal area = 66 sq ft / 6 sq m
Total gross internal area (including restricted head height) = 5,208 sq ft / 484 sq m



FOR ILLUSTRATIVE PURPOSES ONLY - NOT TO SCALE
The position & size of doors, windows, appliances and other features are approximate only.
© ehouse. Unauthorised reproduction prohibited. Drawing ref. dig/8480365/SS



Important notice: Savills, their clients and any joint agents give notice that 1: They are not authorised to make or give any representations or warranties in relation to the property either here or elsewhere, either on their own behalf or on behalf of their client or otherwise. They assume no responsibility for any statement that may be made in these particulars. These particulars do not form part of any offer or contract and must not be relied upon as statements or representations of fact. 2: Any areas, measurements or distances are approximate. The text, photographs and plans are for guidance only and are not necessarily comprehensive. It should not be assumed that the property has all necessary planning, building regulation or other consents and Savills have not tested any services, equipment or facilities. Purchasers must satisfy themselves by inspection or otherwise. 12021110 Job ID: 155170 User initials: NM