



Well-appointed village bungalow

Rotheroak, Stedham

Freehold



Kitchen with dining area • Sitting room • Conservatory
 • Three / Four Bedrooms (one en suite) • Family bathroom
 • Cloakroom • Garden and terrace • Double garage

Description

Situated in the heart of the village, Rothoak is an attractive village bungalow which offers well proportioned, spacious and light accommodation. The property is set in a quiet position, has been well maintained by the current owners and would be well suited to either a family or a downsizer.

The accommodation comprises triple aspect sitting room with log burning stove, kitchen with an adjoining dining area and a conservatory with views overlooking the garden.

There are three bedrooms, one with an en suite bathroom and a family bathroom. There is a further fourth bedroom which is a versatile room and currently presented as a dining room.

The delightful gardens are a particular feature, mature trees frame the garden offering a great deal of privacy, there is a good sized area of lawn and a paved terrace ideal for entertaining.

There is parking for several cars on the gravel driveway and a double garage. The property also benefits from a greenhouse, shed and garden store.

Situation

The property is situated in the picturesque village of Stedham which has a primary school, church and a renowned pub, The Hamilton Arms with Thai restaurant. The nearby town of Midhurst is 1.5 miles away and has immense character and charm and offers a good range of pubs and restaurants as well as independent shops including a butcher, baker and delicatessen.

The nearby Cowdray Park Estate offers many country and sporting pursuits including polo, golf, fishing and shooting as well as the popular Cowdray Farm Shop and Café.

Tenure

Freehold

Energy Performance

A copy of the full Energy Performance Certificate is available upon request.

Viewing

Strictly by appointment with Savills.





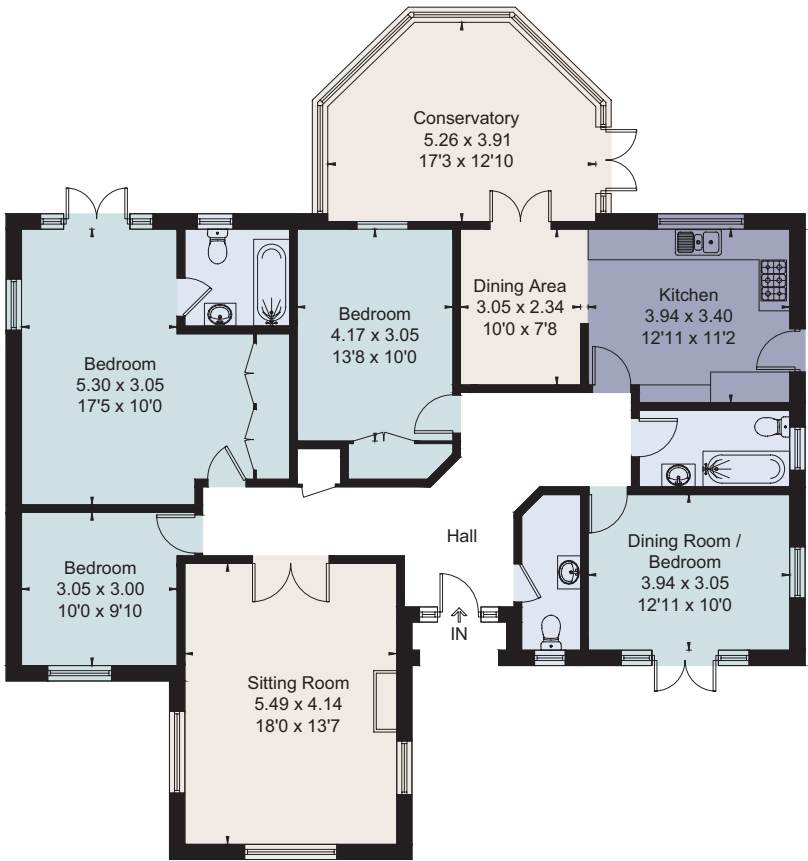
Rotheroak, Stedham
Approximate Floor Area 187.3 sq m / 2016 sq ft



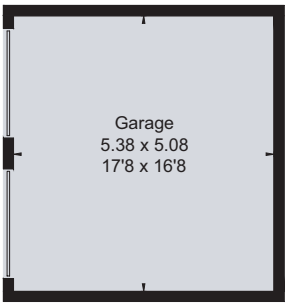
savills

savills.co.uk

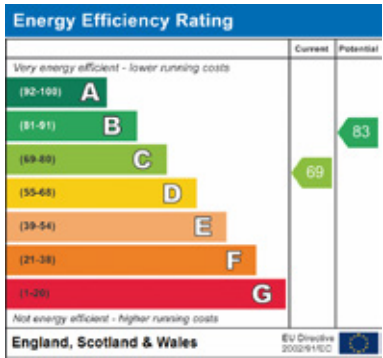
Alice Denny
Savills Petworth
01798 343 111
petworth@savills.com



Ground Floor



(Not Shown In Actual
Location / Orientation)



For identification only. Not to scale. © 200804AD

Important notice Savills, its clients and any joint agents give notice that 1: They are not authorised to make or give any representations or warranties in relation to the property either here or elsewhere, either on their own behalf or on behalf of their client or otherwise. They assume no responsibility for any statement that may be made in these particulars. These particulars do not form part of any offer or contract and must not be relied upon as statements or representations of fact. 2: Any areas, measurements or distances are approximate. The text, photographs and plans are for guidance only and are not necessarily comprehensive. It should not be assumed that the property has all necessary planning, building regulation or other consents and Savills have not tested any services, equipment or facilities. Purchasers must satisfy themselves by inspection or otherwise. Brochure by fourwalls-group.com

