

# 4 BUDGENOR LODGE

EASEBOURNE



savills

# A STYLISHLY PRESENTED THREE BEDROOM MEWS HOUSE

---

Well-presented throughout ♦ kitchen  
♦ conservatory/dining room ♦ sitting room  
♦ 3 bedrooms ♦ additional bedroom/study  
♦ allocated parking for 2 cars ♦ communal  
gardens

---

## Description

Budgenor Lodge is an imposing and historic 18th century building, originally built as the Easebourne workhouse in 1794. The development was subject to an extensive modernisation and rebuilding project in 2007 creating 42 well-appointed houses, apartments and duplexes.

Budgenor Lodge is approached by electric gates with a beautifully landscaped central courtyard garden.

On entering the property, an entrance hall with wood floors leads to a spacious sitting room and conservatory/dining room with French doors leading on to a south facing garden. The kitchen is set back from the sitting room and features a range of fitted units, and built in appliances.

On the first floor are two bedrooms, one en suite and a shower bathroom. On the second floor, there is a third double bedroom and a bedroom/study with conservation rooflights.

In addition, the property has the benefit of two parking spaces and visitor parking is also available.





## Situation

Easebourne is a charming village with two schools, a church and the popular Cowdray farm shop. The Lodge has easy access to the historic market town of Midhurst which has an array of shops, pubs and restaurants. The nearby Cowdray Park Estate offers many country and sporting pursuits including polo, golf, fishing and shooting.

**Tenure:** Share of freehold

**Services:** All mains services

**Important Notice:** Photographs taken March 2019.

**Local Authority:** Chichester District Council

**Fixtures & Fittings:** Certain fixtures and fittings are specifically excluded from the sale but may be available by separate negotiation.

**Service Charge:** £2283 per annum, to be paid quarterly in equal instalments.

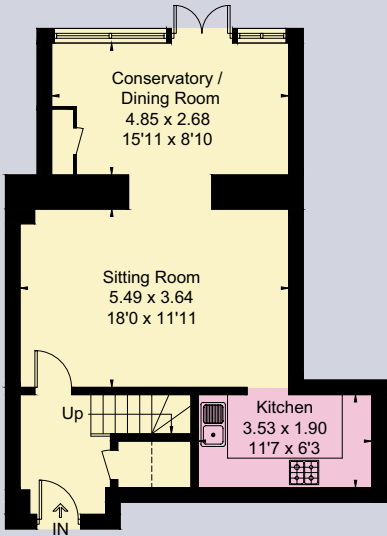
**Energy Performance:** A copy of the full Energy Performance Certificate is available upon request.

**Viewing:** Strictly by appointment with Savills.

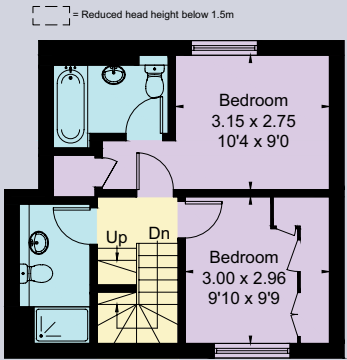


# FLOORPLANS

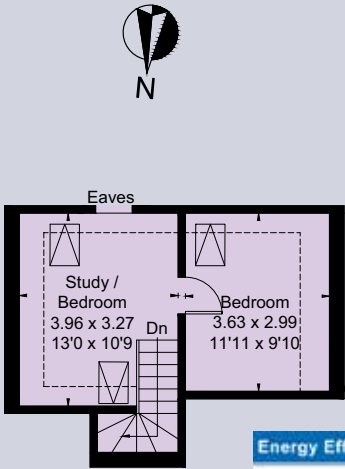
Approximate Floor Area = 108 sq m / 1167 sq ft



Ground Floor



First Floor



Second Floor

**Savills Petworth,**  
Exchange House, Petworth  
GU28 0BF  
petworth@savills.com  
**01798 343111**  
**savills.co.uk**

Savills, their clients and any joint agents give notice that: 1. They are not authorised to make or give any representations or warranties in relation to the property either here or elsewhere, either on their own behalf or on behalf of their client or otherwise. They assume no responsibility for any statement that may be made in these particulars. These particulars do not form part of any offer or contract and must not be relied upon as statements or representations of fact. 2. Any areas, measurements or distances are approximate. The text, images and plans are for guidance only and are not necessarily comprehensive. It should not be assumed that the property has all necessary planning, building regulation or other consents and Savills have not tested any services, equipment or facilities. Purchasers must satisfy themselves by inspection or otherwise. 190328AD

