



Delightful Grade II listed character cottage

Widneys, Coldwaltham

Freehold



Kitchen • Dining room • Sitting room • Study • Four bedrooms • Three bath/shower rooms • Garden • Summer house • Workshop • Car port

Description

Widneys is a Grade II listed character cottage with many features associated with its original age. Understood to date from 1550, the cottage has an abundance of charm and has been well maintained by the current owners.

The kitchen has been fitted with a bespoke range of units, built-in appliances, space for informal dining and doors on to the garden. There is an adjoining dining room with vaulted ceiling and exposed stone wall.

The sitting room has characterful beams, a brick fireplace with log burning stove and views overlooking the gardens.

The ground floor benefits from a study, bathroom with freestanding bath and a shower room.

There are four bedrooms to the first floor all boasting a wealth of original features and an additional shower room.

The gardens are a particular feature of the property and have been beautifully landscaped. The terrace provides a wonderful space to entertain and enjoy the summer evenings, there is a large area of lawn, several flower beds and borders, with mature shrubs providing colour through the year.

Widneys is accessed via wooden gates on to a gravel driveway with space for several cars along with a car port and workshop.

Situation

Situated in the heart of the village, Widneys occupies a peaceful position with convenient access to the Wild Brooks, a popular nature reserve that is a haven for a wide range of wildlife.

The town of Pulborough is approximately 2 miles away and offers a range of local shops including butcher and grocer as well as two supermarkets. There are medical, dental and veterinary services along with a library. Pulborough station offers direct trains to London Victoria from 72 minutes. Billingshurst has a useful range of shops and services including a leisure centre, with rail links as above.

The picturesque market town of Petworth is about six miles away and has a broad selection of independent shops and restaurants, such as The Hungry Guest food group comprising an artisan delicatessen, butchers and café. Larger towns in the area are Chichester, Horsham and Guildford.

Tenure

Freehold

Viewing

Strictly by appointment with Savills.





Widneys, Coldwaltham

Approximate Area 176.3 sq m / 1898 sq ft

Summer House / Workshop 33.7 sq m / 363 sq ft

Total 210.0 sq m / 2261 sq ft (Excluding Carport)



savills

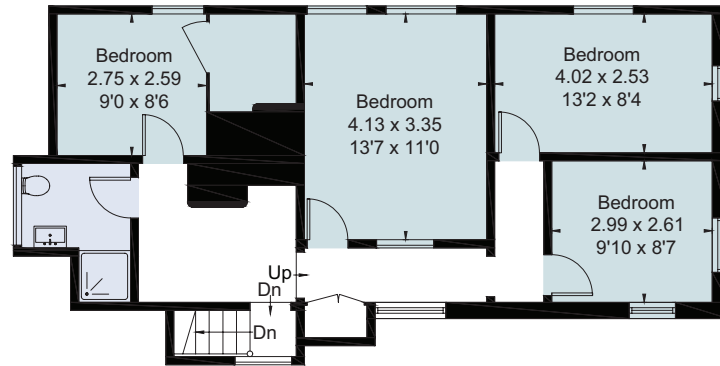
savills.co.uk

Alice Denny

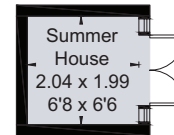
Savills Petworth

01798 343 111

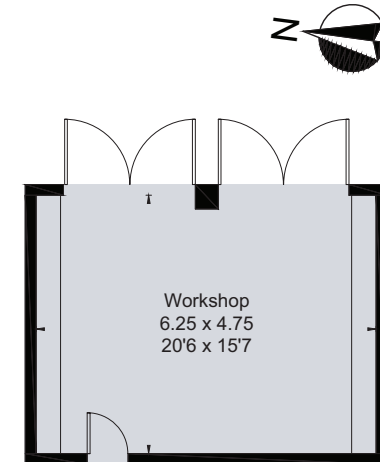
petworth@savills.com



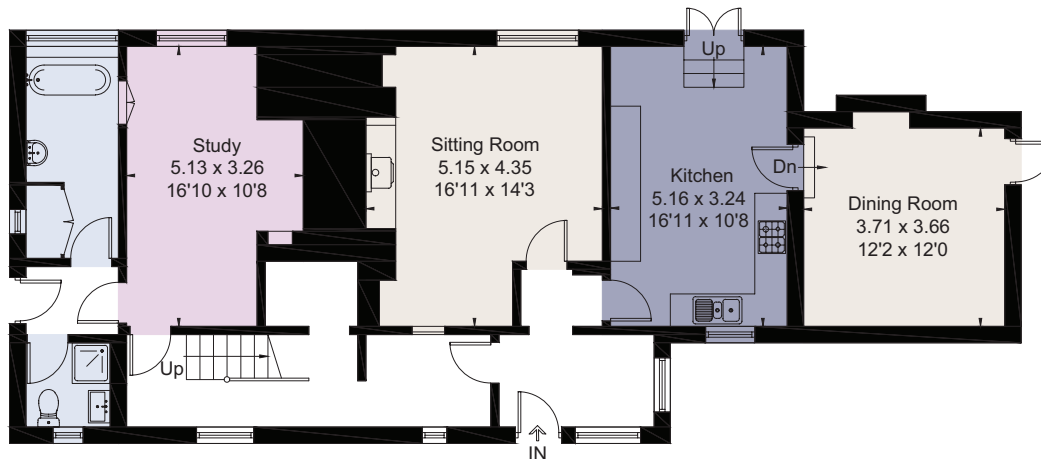
First Floor



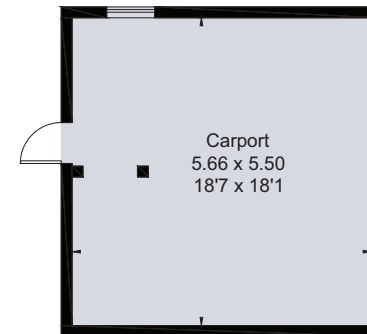
(Not Shown In Actual Location / Orientation)



(Not Shown In Actual Location / Orientation)



Ground Floor



(Not Shown In Actual Location / Orientation)

For identification only. Not to scale. © 200818AD

Important notice Savills, its clients and any joint agents give notice that 1: They are not authorised to make or give any representations or warranties in relation to the property either here or elsewhere, either on their own behalf or on behalf of their client or otherwise. They assume no responsibility for any statement that may be made in these particulars. These particulars do not form part of any offer or contract and must not be relied upon as statements or representations of fact. 2: Any areas, measurements or distances are approximate. The text, photographs and plans are for guidance only and are not necessarily comprehensive. It should not be assumed that the property has all necessary planning, building regulation or other consents and Savills have not tested any services, equipment or facilities. Purchasers must satisfy themselves by inspection or otherwise. Brochure by fourwalls-group.com

