



A light and spacious ground floor two bedroom flat located on Carlton Drive moments from East Putney underground station

Westmore Court, 17-20 Carlton Drive, Putney, London, SW15 2BU

£579,950 Leasehold

savills

Two Bedrooms • Large Reception Room • Private Garage •
Ground floor • Excellent Location • Chain Free • Communal
Gardens

Local Information

Carlton Drive runs between Putney Hill and Upper Richmond Road and is ideally placed for the shopping and transport facilities of Putney High Street. Putney mainline station and East Putney underground station (District Line) are both only a short walk away, and there are also numerous bus links. The green open spaces of Putney Heath and Wandsworth Park are also within walking distance.

About this property

A well-presented, two double bedroom flat, in Central Putney. The property comprises of two double bedrooms, large Reception room with Juliet balcony, spacious kitchen and family Bathroom. The property further benefits from communal gardens and a private garage.

Tenure

Leasehold

Local Authority

Wandsworth

Energy Performance

EPC Rating = C

Viewing

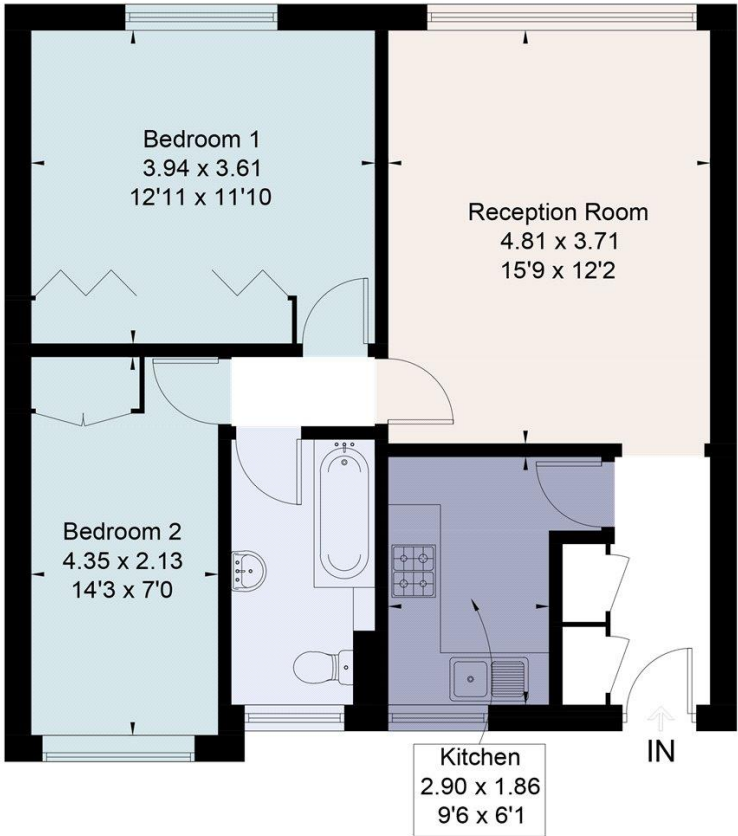
All viewings will be accompanied and are strictly by prior arrangement through Savills Putney Office.

Telephone: +44 (0) 20 8780 9900.

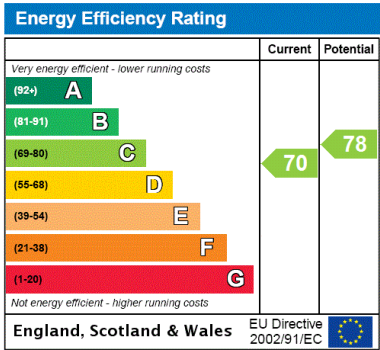




Approximate Area = 62.2 sq m / 669 sq ft
Including Limited Use Area (0.9 sq m / 10 sq ft)
For identification only. Not to scale.
© Fourwalls



Surveyed and drawn in accordance with the International Property Measurement Standards (IPMS 2: Residential)
fourwalls-group.com 260480



Important Notice Savills, its clients and any joint agents give notice that 1: They are not authorised to make or give any representations or warranties in relation to the property either here or elsewhere, either on their own behalf or on behalf of their client or otherwise. They assume no responsibility for any statement that may be made in these particulars. These particulars do not form part of any offer or contract and must not be relied upon as statements or representations of fact. 2: Any areas, measurements or distances are approximate. The text, photographs and plans are for guidance only and are not necessarily comprehensive. It should not be assumed that the property has all necessary planning, building regulation or other consents and Savills have not tested any services, equipment or facilities. Purchasers must satisfy themselves by inspection or otherwise. 20200910NLSM

