



A newly built first floor maisonette apartment

Sefton Street Putney SW15 1NA

Guide Price £539,950 Share of Freehold



Kitchen/dining/reception room • Two bedrooms •
Bathroom • Communal hallway

Local information

Sefton Street is located just off the Lower Richmond Road, so close to the "village vibe" of West Putney with its many local amenities. This family home is well situated for access to Putney Common as well as the local Church, State and Private schools. The new Oasis Academy is ideally placed too. The closest underground stations are Putney Bridge and East Putney (District line) and Putney mainline station can be found on the High Street. The nearby 22 Bus runs to Piccadilly Circus.

About this property

Within this handsome, double fronted, newly built property are four stunning apartments. Each has been beautifully designed to an exacting finish and include top of the range appliances, with German Siematic kitchens and Hansgrohe bathroom fittings. Each property has a Lutron system fitted and underfloor heating throughout.

Occupying the first and second floors, apartment three has a wonderful, bright and open plan kitchen/reception room. There are two bedrooms and a separate family bathroom.

Tenure

Guide Price £539,950 Share of Freehold

Local Authority

London Borough of Wandsworth

EPC rating = C

Viewing

Strictly by appointment with Savills

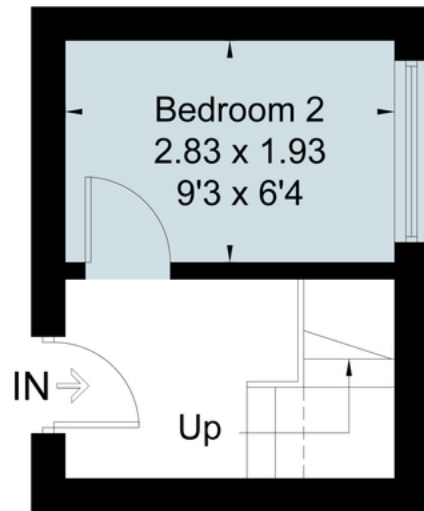




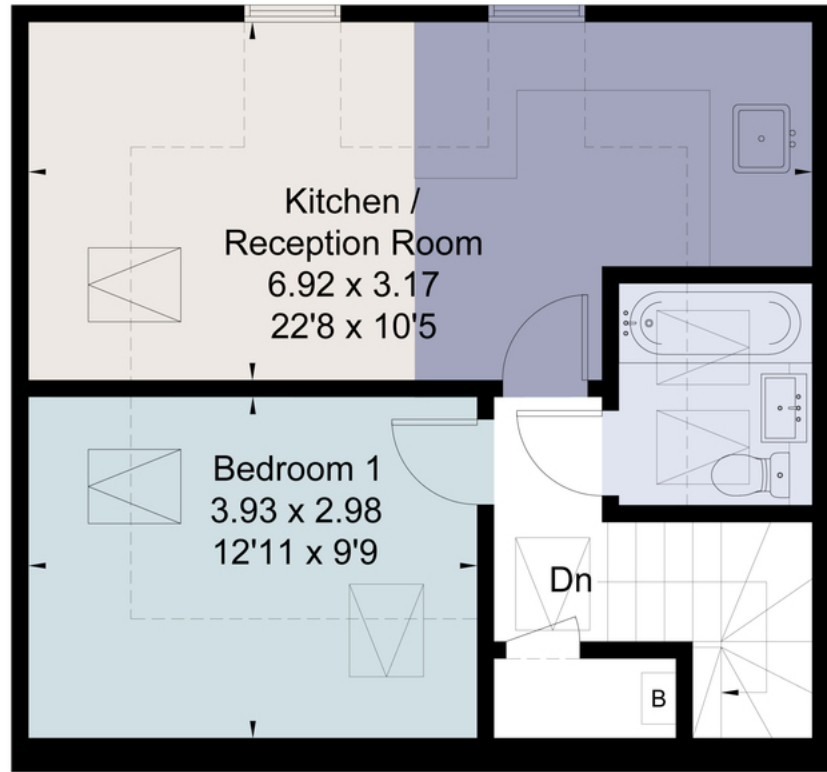
Approximate Area = 55 sq m / 592 sq ft
Including Limited Use Area (19.8 sq m / 213 sq ft)
For identification only. Not to scale.
© Fourwalls Group



= Reduced head height below 1.5m



First Floor



Second Floor

Surveyed and drawn in accordance with the International Property Measurement Standards (IPMS 2: Residential)
fourwalls-group.com 249442

Energy Efficiency Rating		Current	Potential
Very energy efficient - lower running costs			
(92-100) A			
(81-91) B			89
(69-80) C		69	
(55-68) D			
(39-54) E			
(21-38) F			
(1-20) G			
Not energy efficient - higher running costs			
England, Scotland & Wales		EU Directive 2002/91/EC	

Important notice: Savills, their clients and any joint agents give notice that 1: They are not authorised to make or give any representations or warranties in relation to the property either here or elsewhere, either on their own behalf or on behalf of their client or otherwise. They assume no responsibility for any statement that may be made in these particulars. These particulars do not form part of any offer or contract and must not be relied upon as statements or representations of fact. 2: Any areas, measurements or distances are approximate. The text, photographs and plans are for guidance only and are not necessarily comprehensive. It should not be assumed that the property has all necessary planning, building regulation or other consents and Savills have not tested any services, equipment or facilities. Purchasers must satisfy themselves by inspection or otherwise. 02022091 Job ID: 141025 User initials: NLS

