



Elegant 3 bed period apartment in beautiful gardens

Glenalmond House Manor Fields Putney SW15 3LP

Guide Price £885,000 Share of Freehold



Double reception room • Kitchen • three bedrooms • Bathroom • Cloakroom • Off-street parking • Communal gardens • Lift and porter

Local information

Manor Fields is situated just to the south of Putney High Street, where there are excellent local shops and a mainline station (Waterloo). East Putney underground (District Line) is a little further along the Upper Richmond Road.

About this property

Arguably, one of the nicest apartments in this iconic period development of mansion blocks, situated around pretty landscaped grounds, to come on the market.

The property is situated on the second floor and enjoys a lovely sweeping aspect, over beautiful gardens and grounds. It is beautifully presented and has undergone excellent improvements with much thought and attention to detail by the current owners. Notable additions include a modern fitted kitchen and a quality bathroom, as well as period features.

Tenure

Guide Price £885,000 Share of Freehold

Local Authority

London Borough of Wandsworth

EPC rating = C

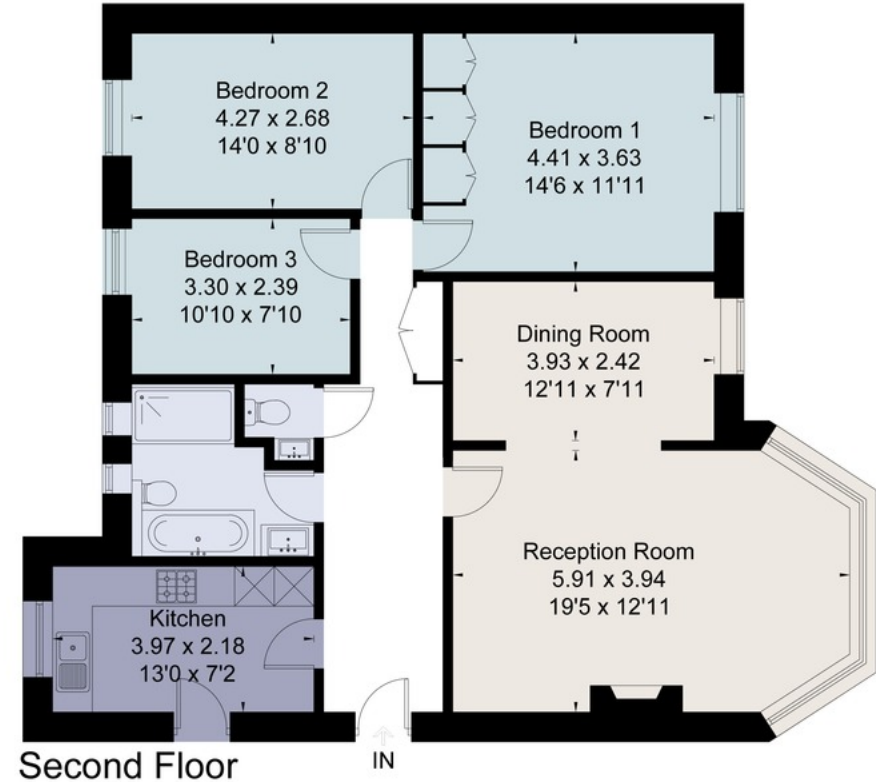
Viewing

Strictly by appointment with Savills

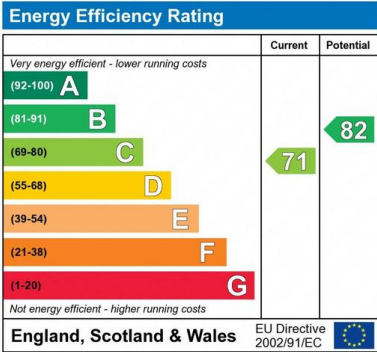




Approximate Area = 103.4 sq m / 1113 sq ft
Including Limited Use Area (2.6 sq m / 28 sq ft)
For identification only. Not to scale.
© Fourwalls Group



Surveyed and drawn in accordance with the International Property Measurement Standards (IPMS 2: Residential)
fourwalls-group.com 244564



Important notice: Savills, their clients and any joint agents give notice that 1: They are not authorised to make or give any representations or warranties in relation to the property either here or elsewhere, either on their own behalf or on behalf of their client or otherwise. They assume no responsibility for any statement that may be made in these particulars. These particulars do not form part of any offer or contract and must not be relied upon as statements or representations of fact. 2: Any areas, measurements or distances are approximate. The text, photographs and plans are for guidance only and are not necessarily comprehensive. It should not be assumed that the property has all necessary planning, building regulation or other consents and Savills have not tested any services, equipment or facilities. Purchasers must satisfy themselves by inspection or otherwise. 91020112 Job ID: 137850 User initials: NLS

