



Newly built 2 bedroom apartment in a boutique block

**Apartment 1, Boatman's Court, Walkers Place, Putney SW15 1PP**

Guide Price £925,000 Leasehold 150 Years



Large open plan kitchen/breakfast/reception room •  
Two bedrooms • Two bathrooms (one en suite) • Smart  
communal areas • Lift • Unusually low service charge •  
External photograph is a CGI

#### Local information

Putney Bridge (District Line) and  
Putney mainline (Waterloo) are  
within close proximity, as is the  
high street and the many  
amenities Putney has to offer.

#### About this property

Specification:

Kitchen:

- Nobilia kitchens with  
Silestone worktops, upstands and  
full height splash backs
- Sensio LED under wall strip  
lighting
- Integrated Miele appliances:  
oven, combi microwave,  
induction hob, dishwasher, fridge  
freezer
- Siemens integrated washing  
machine and extractor fan
- Quooker instant boiling water  
tap

Bathrooms, shower rooms and en  
suites:

- Armarii bespoke wall  
mounted vanity cabinet
- Duravit sanitary ware
- Gessi fittings in Antique Brass  
finish
- Chrome heated towel rails

Heating & Plumbing:

- Wet underfloor heating  
throughout apartments
- Pressurised combi boiler  
system
- Vent-Axia ventilation with  
heat recovery system

Lighting, Electrical & Security:

- LED strip lighting recessed to  
living areas & bedrooms
- inset spot lighting to  
bathrooms & hallways
- Video entry system

Warranty:

- 10 year CRL warranty

#### Tenure

Guide Price £925,000 Leasehold  
150 Years

#### Local Authority

London Borough of Wandsworth

EPC rating = B

#### Viewing

Strictly by appointment with  
Savills







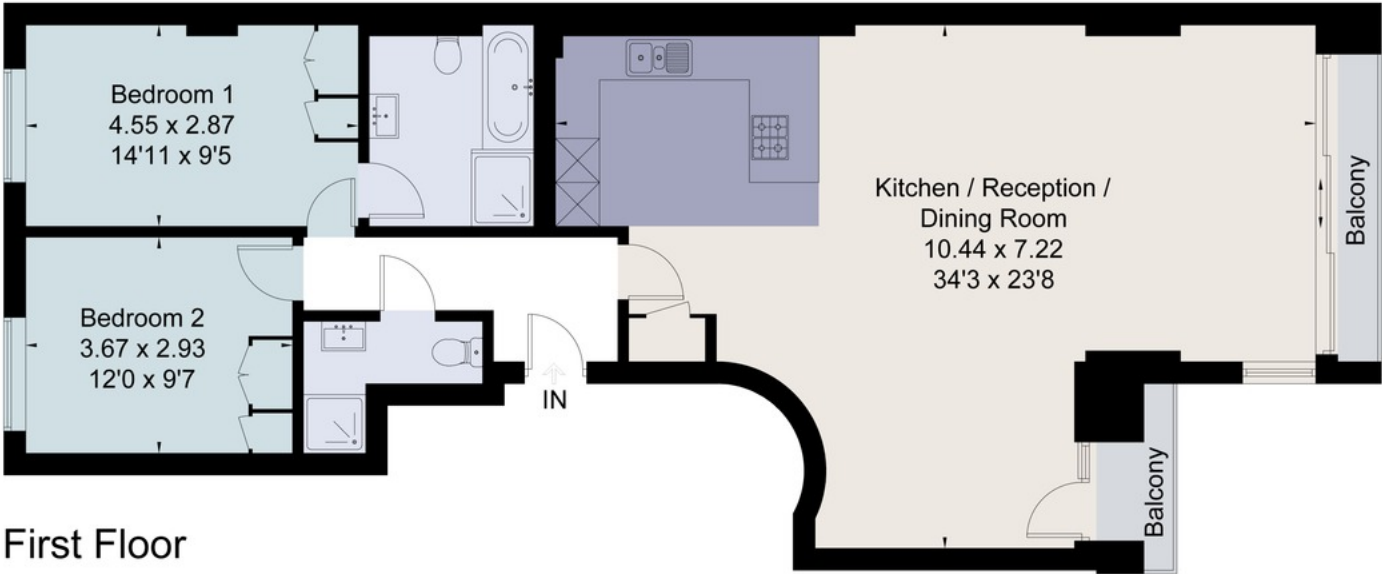


savills

savills.co.uk

**Matthew Heard**  
Savills Putney  
**020 8780 9900**  
putney@savills.com

Approximate Area = 97.4 sq m / 1048 sq ft  
Including Limited Use Area (0.8 sq m / 9 sq ft)  
Balcony Areas = 4.2 sq m / 45 sq ft  
For identification only. Not to scale.  
© Fourwalls Group



First Floor

Surveyed and drawn in accordance with the International Property Measurement Standards (IPMS 2: Residential)  
fourwalls-group.com 240312

Energy Efficiency Rating		
	Current	Potential
Very energy efficient - lower running costs		
(92-100) <b>A</b>		
(81-91) <b>B</b>	87	87
(69-80) <b>C</b>		
(55-68) <b>D</b>		
(39-54) <b>E</b>		
(21-38) <b>F</b>		
(1-20) <b>G</b>		
Not energy efficient - higher running costs		
England, Scotland & Wales	EU Directive 2002/91/EC	

**Important notice:** Savills, their clients and any joint agents give notice that 1: They are not authorised to make or give any representations or warranties in relation to the property either here or elsewhere, either on their own behalf or on behalf of their client or otherwise. They assume no responsibility for any statement that may be made in these particulars. These particulars do not form part of any offer or contract and must not be relied upon as statements or representations of fact. 2: Any areas, measurements or distances are approximate. The text, photographs and plans are for guidance only and are not necessarily comprehensive. It should not be assumed that the property has all necessary planning, building regulation or other consents and Savills have not tested any services, equipment or facilities. Purchasers must satisfy themselves by inspection or otherwise. 91028091 Job ID: 135761 User initials: NLS

