



A lovely two bedroom flat with a south facing garden

Disraeli Road Putney SW15 2DX

Guide Price £759,950 Leasehold

savills

Ground floor • Entrance hall • Reception room/open plan kitchen • Two double bedrooms • Bathroom • Delightful south facing garden • Large basement for storage

Local information

Disraeli Road runs to the east of Putney High Street and is therefore well located for all the excellent local facilities including Wandsworth Park. Putney mainline station (Waterloo) is close by on Putney High Street and the nearest underground is East Putney (District Line) which is only a 0.3km short walk from the property.

About this property

This well presented garden flat offers open plan living accommodation on the ground floor of this period property close to the facilities of Putney High Street (916 sq ft).

The property comprises two double bedrooms with fitted cupboards, a bathroom with shower into the bath, a basement for storage and a reception room with and an open plan kitchen.

The south facing garden is a real sun trap, is well stocked and mainly laid to lawn.

Tenure

Guide Price £759,950 Leasehold

Local Authority

London Borough of Wandsworth

EPC rating = C

Viewing

Strictly by appointment with Savills







DISRAELI ROAD, SW15

Approx. gross internal area = 733 Sq Ft. / 68.1 Sq M
Cellar = 183 Sq Ft. / 17 Sq M
Total = 916 Sq Ft. / 85.1 Sq M

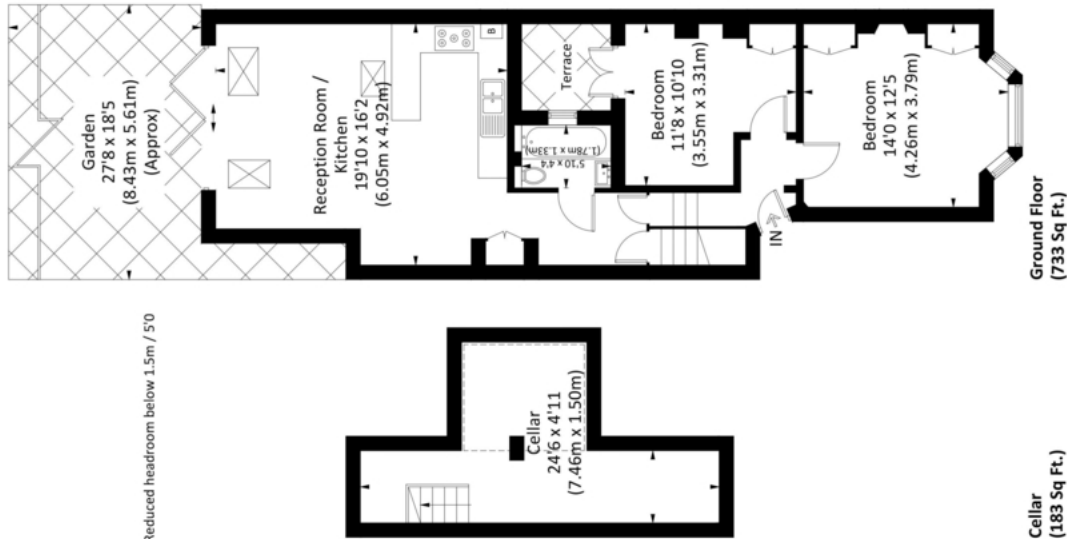
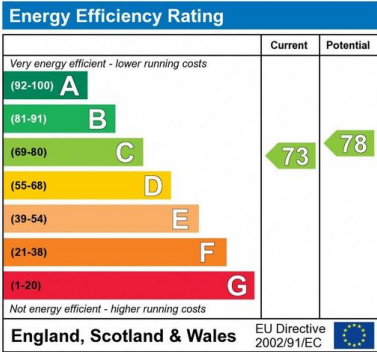


Illustration for identification purposes only, measurements are approximate, not to scale. FloorplansUsketch.com © 2019 (ID585480)



Important notice: Savills, their clients and any joint agents give notice that 1: They are not authorised to make or give any representations or warranties in relation to the property either here or elsewhere, either on their own behalf or on behalf of their client or otherwise. They assume no responsibility for any statement that may be made in these particulars. These particulars do not form part of any offer or contract and must not be relied upon as statements or representations of fact. 2: Any areas, measurements or distances are approximate. The text, photographs and plans are for guidance only and are not necessarily comprehensive. It should not be assumed that the property has all necessary planning, building regulation or other consents and Savills have not tested any services, equipment or facilities. Purchasers must satisfy themselves by inspection or otherwise. 91029061 Job ID: 136660 User initials: NLS

