



A charming, immaculately presented 2 bedroom mews house with secure underground parking close to the river and park

Thornhill Mews, Deodar Road, Putney, London, SW15

Furnished, £3,000 pcm. Other fees may apply*
Available Now



Charming mews development • Large reception room which adjoins the well equipped kitchen • 2 bedrooms with en suite bathrooms • Secure underground parking • Close to the river and Wandsworth park

About this property

This charming mews development of just 6 houses is accessed via secure white gates which open into the delightful cobbled courtyard setting.

Accommodation is arranged over 2 floors extending to over 1100 sq ft. There is a wonderful large reception room on the ground floor, which also adjoins the well equipped kitchen. There is also a large, separate utility room offering good storage and guest cloakroom.

Upstairs there are 2 exceptionally large bedrooms, both with dressing areas and en suite bathrooms.

Secure underground parking is provided beneath the Hurlingham School to the rear.

Local Information

Putney combines the appeal of suburban living with all the convenience of Zone 2 centrality as well as offering easy access to various heaths, commons and the River Thames.

Putney is spoilt by its transport options. The two underground stations, Putney Bridge and East Putney are on the District line, the overground trains link to Waterloo in under 20 minutes and of course Putney is the starting and Termination point for the 14 and

22 buses, perfect for those working in Central London. River bus services can be picked up at Putney Pier and Riverside Quarter Pier too.

It is also very popular with cyclists and other athletes who enjoy the proximity to Richmond Park and the miles of the Thames Path National Trail.

Furnishing

Furnished

Local Authority

Wandsworth

Energy Performance

EPC Rating = E

Viewing

All viewings will be accompanied and are strictly by prior arrangement through Savills Putney Lettings Office. Telephone: +44 (0) 20 8780 6115.



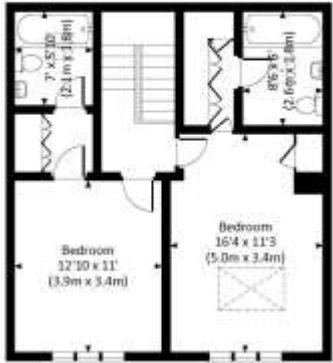


Thornhill Mews, Deodar Road, Putney, London, SW15
Gross Internal Area 1178 sq ft, 109.4 m²

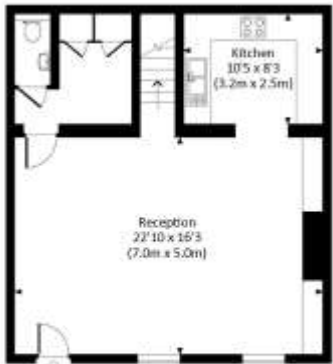
Kieran Rigley
Putney Lettings
+44 (0) 20 8780 6108
kieran.rigley@savills.com

 |  savills | savills.co.uk

THORNHILL MEWS, DEODAR ROAD, SW15
Approx. gross internal area
1178 Sq Ft. / 109.4 Sq M.

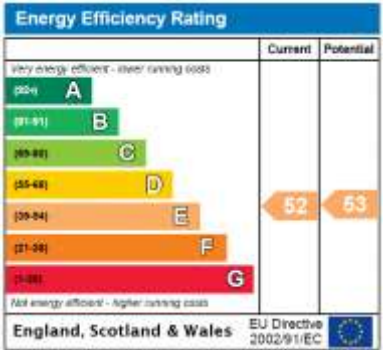


FIRST FLOOR



GROUND FLOOR

All measurements have been made in accordance with RICS Code of Measuring Practice which are approximate and not suitable for building purposes. For the avoidance of doubt, Savills does not accept any liability for any inaccuracy or error in these measurements. © 2017 Savills Residential Services Ltd. 020 7635 8810



Important notice Savills, their clients and any joint agents give notice that: 1. They are not authorised to make or give any representations or warranties in relation to the property either here or elsewhere, either on their own behalf or on behalf of their client or otherwise. They assume no responsibility for any statement that may be made in these particulars. These particulars do not form part of any offer or contract and must not be relied upon as statements or representations of fact. 2. Any areas, measurements or distances are approximate. The text, images and plans are for guidance only and are not necessarily comprehensive. It should not be assumed that the property has all necessary planning, building regulation or other consents and Savills have not tested any services, equipment or facilities. Prospective tenants must satisfy themselves by inspection or otherwise. Please note that the local area may be affected by aircraft noise, you should make your own enquiries regarding any noise within the area before you make any offer.

*There are different rules and fees for different tenancy types. For details of our fees and charges to go to Savills.co.uk/tenant-fees. For more detailed information read our applicant guide at savills.co.uk/applicant-guide. Hard copy available on request. . 20190910KCOA

