



A stunning 2 bedroom apartment with wood flooring and modern fixtures and fittings, gym and parking moments from East Putney underground station

Oakhill Park, Oakhill Road, Putney, London, SW15

£2,740 pcm plus fees apply, Unfurnished
Available Now



Modern open plan kitchen/reception room • Master bedroom has en suite shower room and fitted wardrobes • Separate utility cupboard • Private balcony and communal gardens • Good transport links

About this property

The quality is apparent from the moment you enter the building and are greeted by the concierge. Situated on the first floor and served by twin lifts this flat has wood flooring throughout, the double bedroom benefits from excellent built-in storage. The good sized open plan kitchen/reception room offers plenty of space for both a dining and sitting area with direct access to the south facing private balcony. As an additional bonus this flat has been fitted with air conditioning.

Oakhill Park provides residents with access to an onsite concierge, communal gardens, secure bike storage and a gym. The flat benefits from an allocating parking.

Local Information

Putney combines the appeal of suburban living with all the convenience of zone 2 centrality as well as offering easy access to various heaths, commons and the River Thames.

Putney is spoilt by its transport options. The two underground stations, Putney Bridge and East Putney are on the District line, the overground trains link to Waterloo in under 20 minutes and of course Putney is the starting and Termination point for the 14 and 22 busses, perfect for those

working in Central London. River bus services can be picked up at Putney Pier and Riverside Quarter Pier too.

Furnishing

Unfurnished

Local Authority

London Borough of Wandsworth

Energy Performance

EPC Rating = B

Viewing

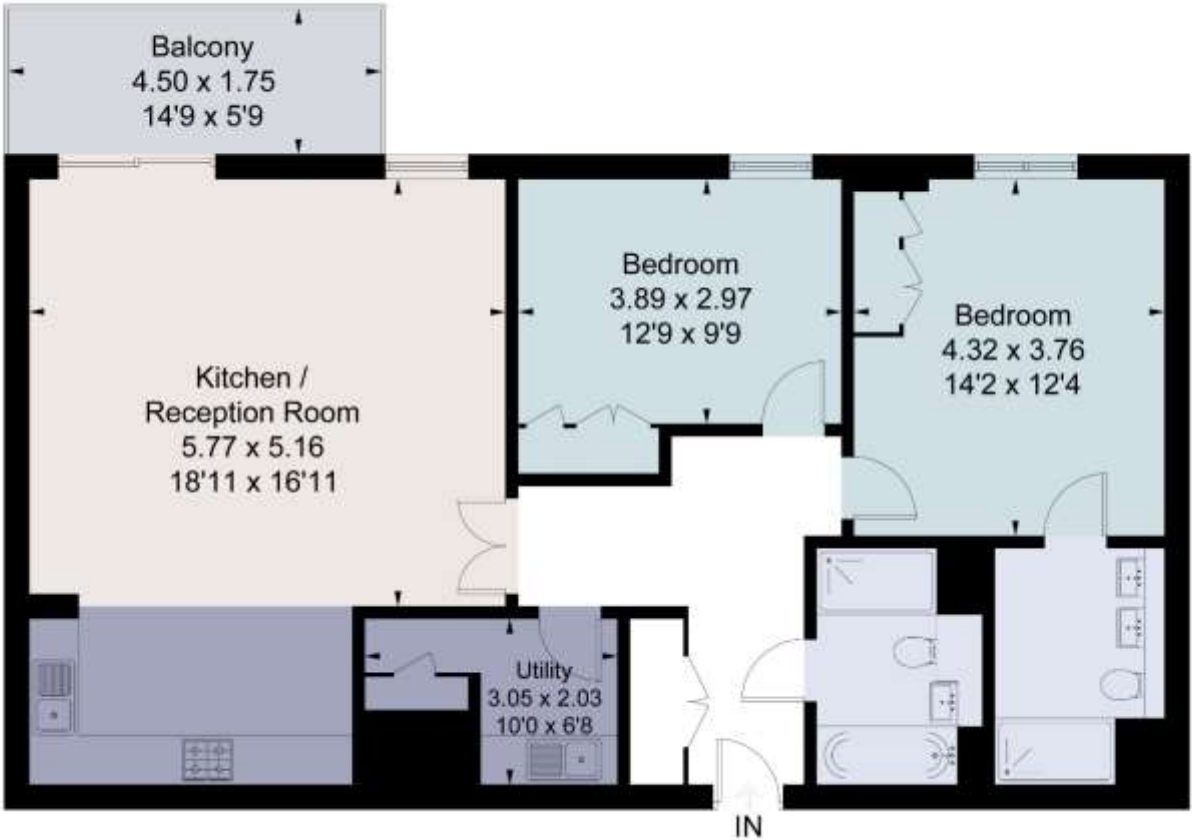
All viewings will be accompanied and are strictly by prior arrangement through Savills Putney Lettings Office. Telephone: +44 (0) 20 8780 6115.





Oakhill Park, Oakhill Road, Putney, London, SW15
Gross Internal Area 1076 sq ft, 100 m²

Approximate Area = 100.0 sq m / 1076 sq ft
For identification only. Not to scale.
© Fourwalls Group



Surveyed and drawn in accordance with the International Property Measurement Standards (IPMS 2: Residential)
fourwalls-group.com 613365

Energy Efficiency Rating		
	Current	Potential
Very energy efficient - lower running costs		
(92-100) A		
(81-91) B	86	86
(69-80) C		
(55-68) D		
(39-54) E		
(21-38) F		
(1-20) G		
Not energy efficient - higher running costs		
England, Scotland & Wales EU Directive 2002/91/EC		

Important notice Savills, their clients and any joint agents give notice that: 1. They are not authorised to make or give any representations or warranties in relation to the property either here or elsewhere, either on their own behalf or on behalf of their client or otherwise. They assume no responsibility for any statement that may be made in these particulars. These particulars do not form part of any offer or contract and must not be relied upon as statements or representations of fact. 2. Any areas, measurements or distances are approximate. The text, images and plans are for guidance only and are not necessarily comprehensive. It should not be assumed that the property has all necessary planning, building regulation or other consents and Savills have not tested any services, equipment or facilities. Prospective tenants must satisfy themselves by inspection or otherwise. Please note that the local area may be affected by aircraft noise, you should make your own enquiries regarding any noise within the area before you make any offer.

*There are different rules and fees for different tenancy types. For details of our fees and charges go to Savills.co.uk/tenant-fees. For more detailed information read our applicant guide at savills.co.uk/applicant-guide.
Hard copy available on request. . 20200114KOCA

