



A charming house with three double bedrooms and a private garden

Harmood Street, Camden, London, NW1

Guide price £1,150,000 Freehold

savills

Wooden floors • Private garden • Period features • Fire places • Freehold

Local Information

Harmood Street is conveniently located approximately 0.1 miles away from Kentish Town West Overground station (London Overground) and approximately 0.3 miles away from Chalk Farm Underground station (Northern Line) which also offers multiple bus routes in and out of central London. Both Regents Park and Primrose Hill Park are approximately 0.8 miles away and Hampstead Heath is approximately 1 mile away. College Francais Bilingue de Londres is approximately 0.6 miles away and Hawley School is approximately 0.3 miles away. Camden Stables Market is approximately 0.1 miles away and the famous Roundhouse is approximately 0.2 miles away.

About this property

A delightful bright and well- presented three double bedroom period house in a sought after location. Set between Primrose Hill and Kentish Town, Harmood Street is ideally positioned for local shops, conveniences and transport links. The property boasts a double reception room with wooden floors and separate kitchen both of which lead onto a private garden. Additional benefits include two fire places, original period features and a charming hedge enclosed front garden.

Tenure

Freehold

Local Authority

London Borough of Camden

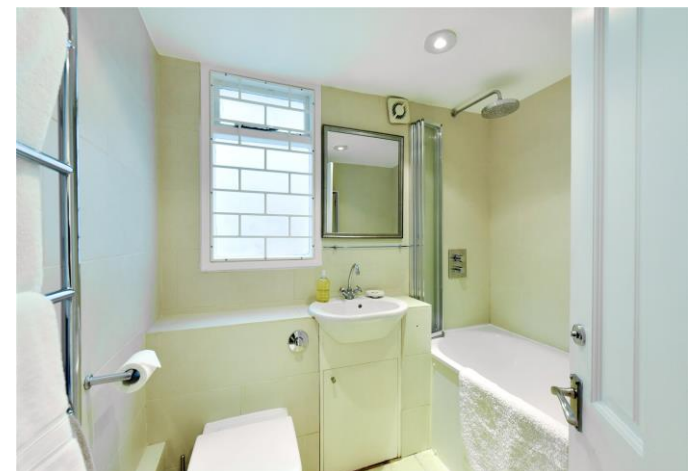
Energy Performance

EPC Rating = E

Viewing

All viewings will be accompanied and are strictly by prior arrangement through Savills Primrose Hill Office.
Telephone: +44 (0) 20 3428 2900.



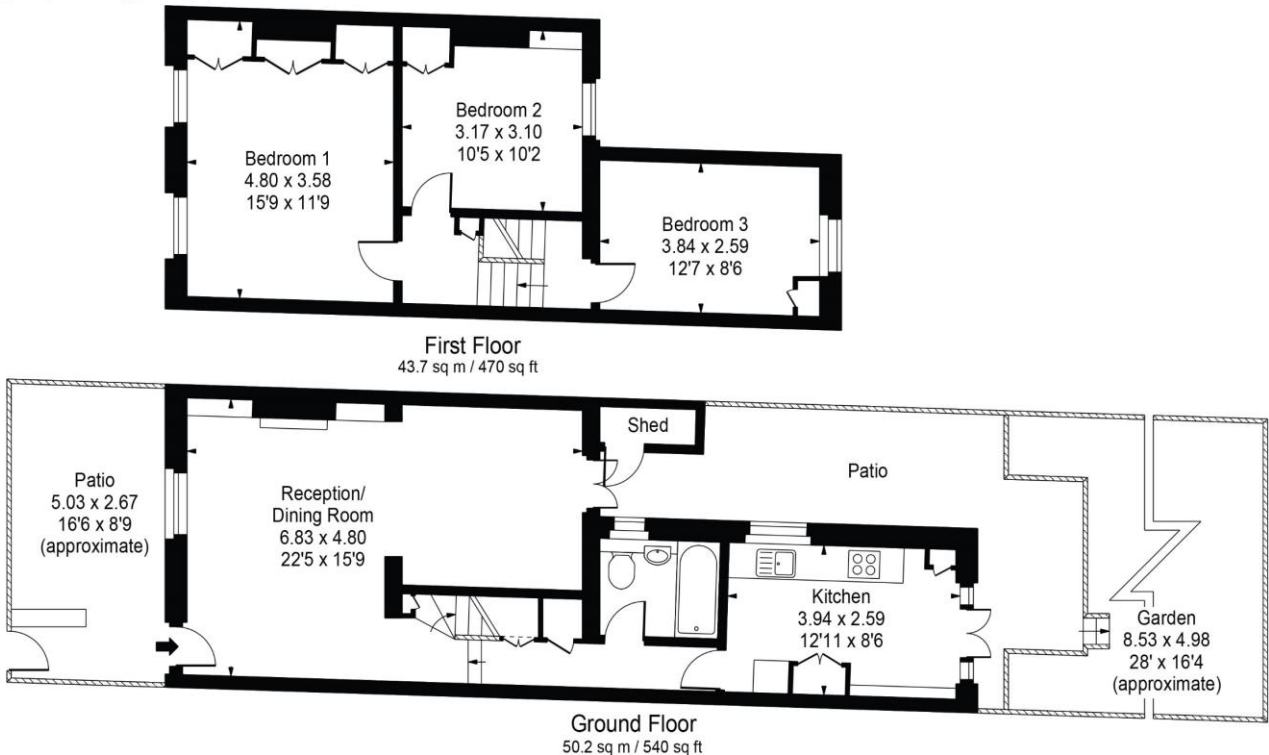



Harmood Street, Camden, London, NW1
Gross Internal Area 1010 sq ft, 93.8 m²

Elias Raymond
Primrose Hill
+44 (0) 20 3428 2900
elias.raymond@savills.com

 |  savills | savills.co.uk

Harmood Street
Gross Internal Area(Aprox)
House = 93.83 Sq m / 1010 Sq ft
Shed = 1.02 Sq m / 11 Sq ft
Total = 94.85 Sq m / 1021 Sq ft
For Illustration Purposes Only - Not To Scale
Floorplan by Humble Spy Photography Ltd.



Energy Efficiency Rating		
	Current	Potential
Very energy efficient - lower running costs		
(92-)	A	
(81-91)	B	
(69-80)	C	
(55-68)	D	
(39-54)	E	
(21-38)	F	
(1-20)	G	
Not energy efficient - higher running costs		
	52	79
England, Scotland & Wales	EU Directive 2002/91/EC	

Important Notice Savills, its clients and any joint agents give notice that 1: They are not authorised to make or give any representations or warranties in relation to the property either here or elsewhere, either on their own behalf or on behalf of their client or otherwise. They assume no responsibility for any statement that may be made in these particulars. These particulars do not form part of any offer or contract and must not be relied upon as statements or representations of fact. 2: Any areas, measurements or distances are approximate. The text, photographs and plans are for guidance only and are not necessarily comprehensive. It should not be assumed that the property has all necessary planning, building regulation or other consents and Savills have not tested any services, equipment or facilities. Purchasers must satisfy themselves by inspection or otherwise. 20201023EYFN

