



A beautifully presented one bedroom apartment which forms part of a recently completed development perfectly positioned close to Camden High Street.

Plender Street, Camden, London, NW1

£499,995 Leasehold (120 years remaining)



Bright and spacious apartment • Wood flooring throughout • Lift • Bicycle storage • Central location

About this property

A beautifully presented one bedroom apartment which forms part of a recently completed development that is perfectly positioned close to Camden High Street. The property offered contemporary style living with an open-plan kitchen dining and reception room, a double bedroom, and bathroom. Further benefits include engineered wood flooring, a lift, built in storage and fully integrated kitchen appliances as well as secure bicycle parking.

Local Information

Plender Street is conveniently located approximately 500ft from Camden High Street and the town's electric charm offering an array of famous street markets, independent shops, funky bars & restaurants along with world famous music venues. There are several transport links to choose from including Momington Crescent is approximately 0.2 miles away (Northern Line), Camden Road Station approximately 0.4 miles (London Overground Line) and Kings Cross & St Pancreas Station which is approximately 0.6 miles (these stations are served by six underground lines and the Eurostar). Furthermore there are several bus routes connecting you to other popular central London destinations. The green open spaces at Regent's Park and Primrose Hill are approximately 0.5 miles.

Tenure

Leasehold (120 years remaining)

Local Authority

London Borough Of Camden

Energy Performance

EPC Rating = B

Viewing

All viewings will be accompanied and are strictly by prior arrangement through Savills Primrose Hill Office. Telephone: +44 (0) 20 3428 2900.



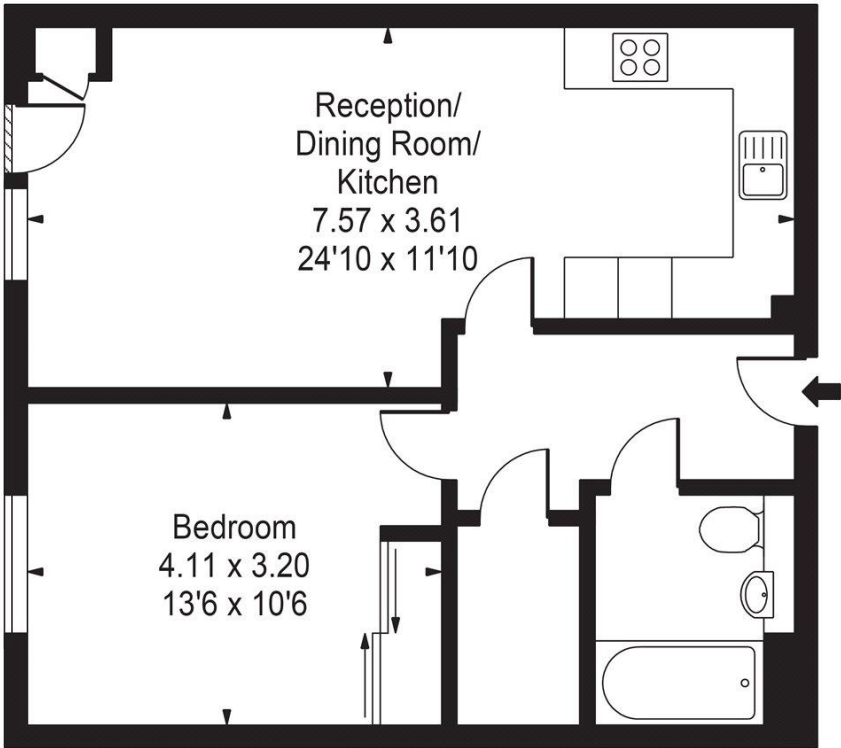


Plender Street, Camden, London, NW1
Gross Internal Area 565 sq ft, 52.5 m²


Elias Raymond
Primrose Hill
+44 (0) 20 3428 2900
elias.raymond@savills.com

 |  savills | savills.co.uk

Plender Street
Gross Internal Area(Approx)
Total = 52.49 Sq m / 565 Sq ft
For Illustration Purposes Only - Not To Scale



Second Floor

Energy Efficiency Rating		
	Current	Potential
Very energy efficient - lower running costs		
(92+) A		
(81-91) B	83	83
(69-80) C		
(55-68) D		
(39-54) E		
(21-38) F		
(1-20) G		
Not energy efficient - higher running costs		
England, Scotland & Wales	EU Directive 2002/91/EC 	

Important Notice Savills, its clients and any joint agents give notice that 1: They are not authorised to make or give any representations or warranties in relation to the property either here or elsewhere, either on their own behalf or on behalf of their client or otherwise. They assume no responsibility for any statement that may be made in these particulars. These particulars do not form part of any offer or contract and must not be relied upon as statements or representations of fact. 2: Any areas, measurements or distances are approximate. The text, photographs and plans are for guidance only and are not necessarily comprehensive. It should not be assumed that the property has all necessary planning, building regulation or other consents and Savills have not tested any services, equipment or facilities. Purchasers must satisfy themselves by inspection or otherwise. 20200914AYPT

