



Apartment with river views and double garage

21 The Waterside, Hellesdon, Norwich, NR6 5QN

Leasehold with a share of freehold



The Property

This spacious apartment has spectacular views over the Wensum Valley and benefits from having two garages and a large storage room.

The private and exclusive Waterside Development is located on the banks of the River Wensum and enjoys a peaceful atmosphere with beautifully kept communal gardens with fishing rights to take full advantage of its riverside location.

This first floor apartment provides light and bright accommodation over one floor and comprises entrance hall, kitchen with Rangemaster oven and hob, granite worktops and Amtico flooring, dining room and reception room with Juliet balcony overlooking the communal gardens and river, principal bedroom with en suite shower room and built-in wardrobes, two further double-sized bedrooms with built-in wardrobes, separate study/4th bedroom and a family bathroom.

Situation

The property is located on the banks of the River Wensum with beautiful walks on the doorstep including Marriott's Way which offers 24.6 miles of footpath, bridleway and cycle route following two disused railway lines between the historic market town of Aylsham and the medieval city of Norwich. Norwich city centre is located about 3.5 miles away and provides all levels of shopping from every

day to specialist, alongside banking and various public houses. There are renowned restaurants and leisure pursuits throughout the city. Private education can be found in a number of schools, both boys and girls, alongside state education from primary through to the University of East Anglia. There is a regular rail service to London Liverpool Street with a fastest journey time of 90 minutes.

Directions

Head out of Norwich on Dereham Road, turn right at the roundabout on to Sweet Briar Road, at the first junction you come to turn left on to Hellesdon Hall Road. Continue past Hellesdon Barns Garden Centre and then turn right onto Low Road. Continue on Low Road for about 0.5 mile and you'll then see a sign for The Waterside on your left hand side. The property is located in the far left hand corner of the development.

Agent Notes

Leasehold with a share of the freehold. 999 year lease from 1st January 2016.

Please speak to the agent for details of the service charge.

No pets permitted.

The aerial view photos have been supplied to us by the seller.

Local authority

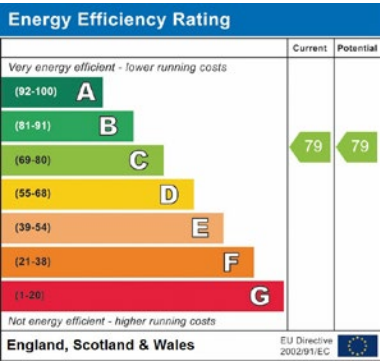
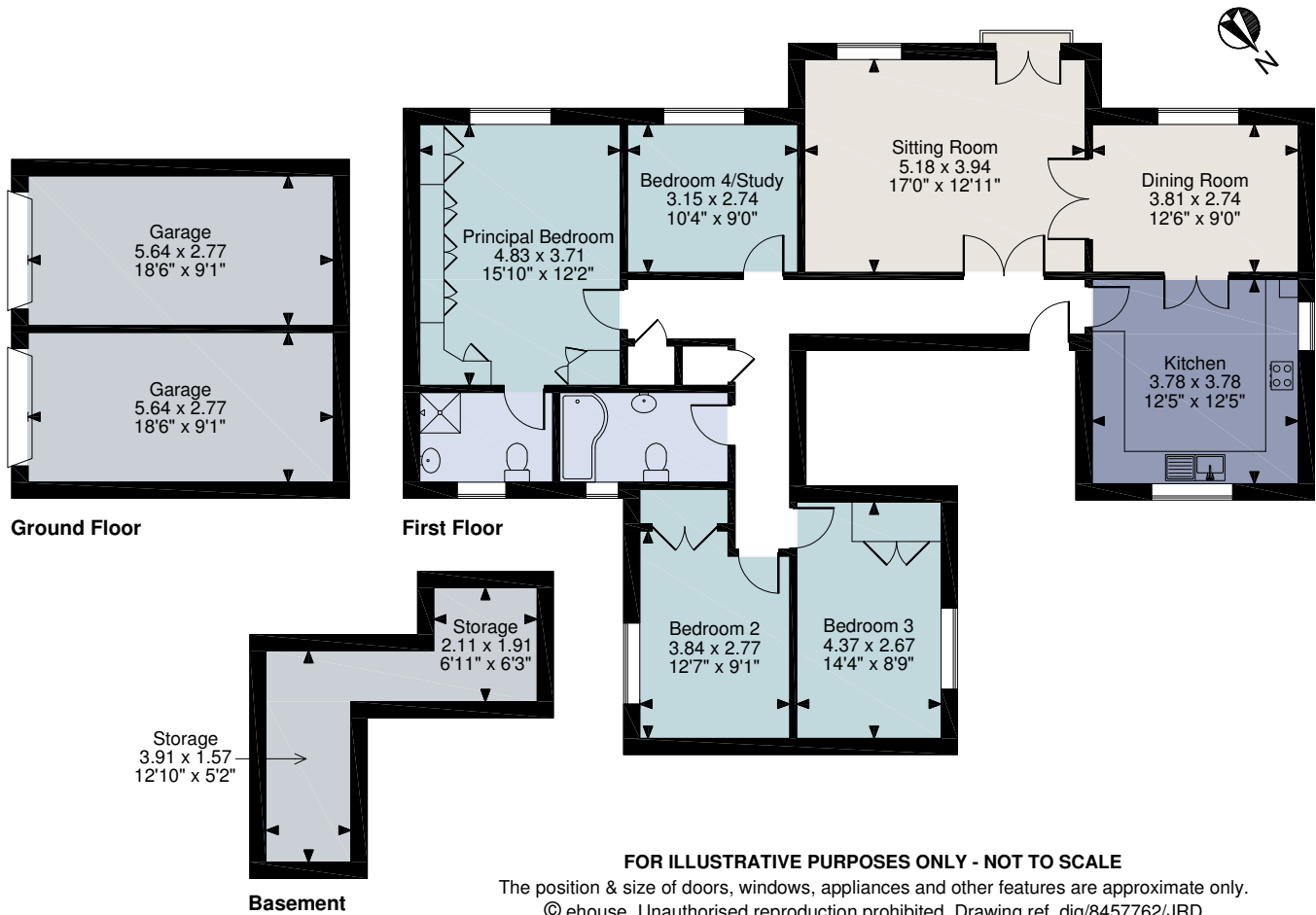
Broadland District Council:
Band E.





The Waterside Hellesdon
Main House 136 sq m/1,459 sq ft
Garage 32 sq m/344 sq ft
Total 168 sq m/1,8030 sq ft

Savills Norwich
01603 229229



For identification only. Not to scale. © 20210406

Important notice Savills, its clients and any joint agents give notice that 1: They are not authorised to make or give any representations or warranties in relation to the property either here or elsewhere, either on their own behalf or on behalf of their client or otherwise. They assume no responsibility for any statement that may be made in these particulars. These particulars do not form part of any offer or contract and must not be relied upon as statements or representations of fact. 2: Any areas, measurements or distances are approximate. The text, photographs and plans are for guidance only and are not necessarily comprehensive. It should not be assumed that the property has all necessary planning, building regulation or other consents and Savills have not tested any services, equipment or facilities. Purchasers must satisfy themselves by inspection or otherwise.

