



A bright two bedroom first floor apartment overlooking St. Charles Square.

St. Charles Square, London, W10

£620,000 Leasehold (166 years remaining)

savills

Impressive period building • Well-presented • Flooded with light
• Plenty of storage space • Close to local amenities

About this property

Situated on the first floor of a grand period building is a well-presented two bedroom apartment. Overlooking St. Charles Square, the south facing reception room is wonderfully bright and enjoys high ceilings. There is a separate well-equipped kitchen.

Found to the rear of the apartment are the two bedrooms and a well-sized bathroom.

Local Information

St. Charles Square is conveniently located for the amenities of Ladbroke Grove and eclectic array of shops, bars and restaurants on Portobello Road. Ladbroke Grove underground station is approximately 0.3 miles away (Hammersmith & City and Circle lines).

Tenure

Leasehold (166 years remaining)

Local Authority

Royal Borough Of Kensington & Chelsea

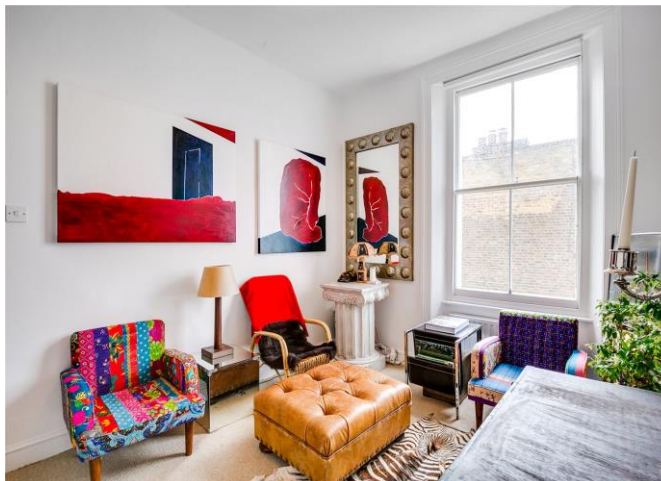
Energy Performance

EPC Rating = D

Viewing

All viewings will be accompanied and are strictly by prior arrangement through Savills Notting Hill Office.

Telephone: +44 (0) 207 727 5750.





St. Charles Square, W10

Gross internal area (approx) 52.95 sq m / 570 sq ft



First Floor

For Identification Only. Not To Scale.
© Click London Limited

Energy Efficiency Rating		
	Current	Potential
Very energy efficient - lower running costs		
(92+) A		
(81-91) B		
(69-80) C		79
(55-68) D	58	
(39-54) E		
(21-38) F		
(1-20) G		
Not energy efficient - higher running costs		
England, Scotland & Wales EU Directive 2002/91/EC		

Important Notice Savills, its clients and any joint agents give notice that 1: They are not authorised to make or give any representations or warranties in relation to the property either here or elsewhere, either on their own behalf or on behalf of their client or otherwise. They assume no responsibility for any statement that may be made in these particulars. These particulars do not form part of any offer or contract and must not be relied upon as statements or representations of fact. 2: Any areas, measurements or distances are approximate. The text, photographs and plans are for guidance only and are not necessarily comprehensive. It should not be assumed that the property has all necessary planning, building regulation or other consents and Savills have not tested any services, equipment or facilities. Purchasers must satisfy themselves by inspection or otherwise. 20210727ELAL

