



An outstanding two bedroom apartment on Westbourne Grove, with access to a fabulous roof terrace.

Westbourne Grove, London, W11

£1,850,000 Leasehold (130 years remaining)

savills

An impeccably designed second floor apartment • A wonderfully bright and lateral space • Access to a fabulous roof terrace
• Secure underground parking • Highly sought after location

About this property

A stylish two bedroom apartment occupying the second floor of an exclusive building in a prime Notting Hill location. Offering generous living space, this apartment comprises an open-plan reception room and a beautifully finished kitchen, with ample space for a dining area.

Both bedrooms enjoy lovely views over the communal terrace and are well-sized. The principal bedroom also benefits from having an en suite and there is a separate family bathroom serving the apartment too.

The apartment further boasts access to the communal roof terrace, secure underground parking and lift access.

Local Information

Westbourne Grove is located in the heart of vibrant Notting Hill with its fantastic selection of cafes, designer boutiques and delis, plus the added benefit of close proximity to Notting Hill Gate Underground Station (approximately 0.5 miles away).

Tenure

Leasehold (130 years remaining)

Local Authority

Royal Borough of Kensington & Chelsea

Energy Performance

EPC Rating = C

Viewing

All viewings will be accompanied and are strictly by prior arrangement through Savills Notting Hill Office.

Telephone: +44 (0) 207 727 5750.



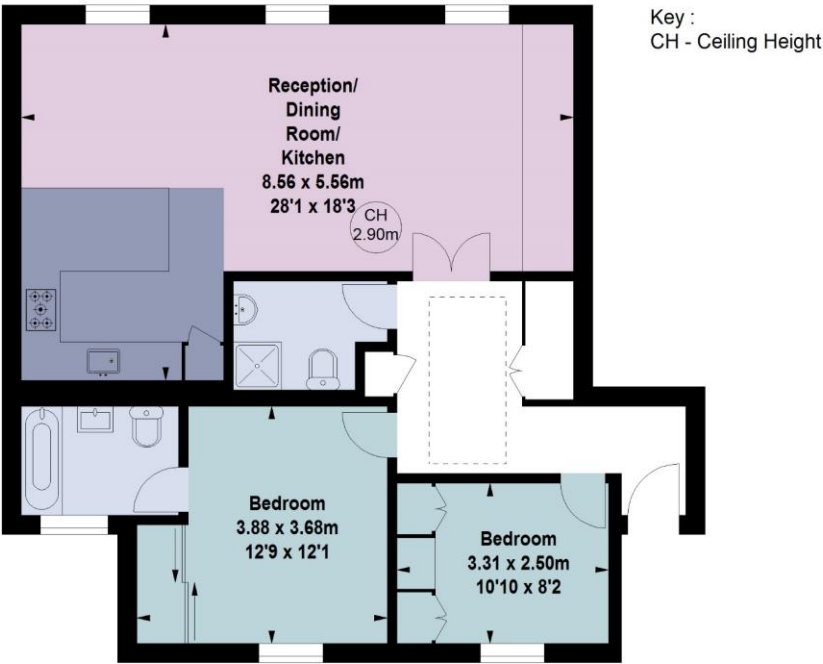


Westbourne Grove, London, W11
Gross Internal Area 898 sq ft, 83.4 m²

Daniel Martin
Notting Hill
+44 (0) 207 727 5750
daniel.martin@savills.com

[onTheMarket.com](#) | [savills](#) | [savills.co.uk](#)

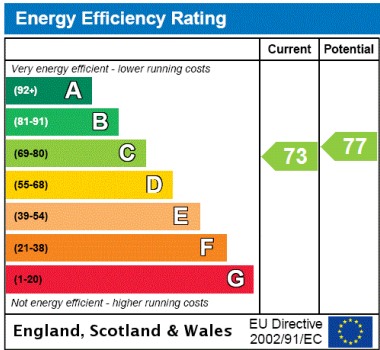
Westbourne Grove, W11
Gross internal area (approx) 83.42 sq m / 898 sq ft



Underground
Allocated Parking
Space
4,76 x 2.9m
15'7 x 9'6

Second Floor

For Identification Only. Not To Scale.
© Click London Limited



Important Notice Savills, its clients and any joint agents give notice that 1: They are not authorised to make or give any representations or warranties in relation to the property either here or elsewhere, either on their own behalf or on behalf of their client or otherwise. They assume no responsibility for any statement that may be made in these particulars. These particulars do not form part of any offer or contract and must not be relied upon as statements or representations of fact. 2: Any areas, measurements or distances are approximate. The text, photographs and plans are for guidance only and are not necessarily comprehensive. It should not be assumed that the property has all necessary planning, building regulation or other consents and Savills have not tested any services, equipment or facilities. Purchasers must satisfy themselves by inspection or otherwise. 20210129ELAL

