



# A modern two bedroom mews house

**Alba Place, Notting Hill, London, W11**

£775 pw (£3,358.33 pcm) plus fees apply, Furnished  
Available now



**Two bedrooms • Two bathrooms • Guest cloak room • One reception Room • Private balcony**  
**• Wooden flooring throughout**

### Local Information

Alba Place a private, gated mews located off Portobello Road in Notting Hill, just north of Westbourne Park Road. It is a short distance from Ladbroke Grove Underground (Circle Line and Hammersmith & City Line) and within easy reach of Notting Hill Gate (Central Line, Circle Line and District Line).

### About this property

This contemporary mews house offers a first floor reception room and kitchen, a master bedroom on the top floor with an en-suite bathroom and dressing area, a second double bedroom and further bathroom and a guest cloakroom.

The house has been finished to a high standard and benefits from under-floor heating throughout, an alarm, ample storage and a small balcony. There is also off-street parking for one car.

### Furnishing

Furnished

### Local Authority

Royal Borough Of Kensington and Chelsea

### Energy Performance

EPC Rating = C

### Viewing

All viewings will be accompanied and are strictly by prior arrangement through Savills Notting Hill Lettings Office.

Telephone: +44 (0) 20 7727 5751.







Alba Place, Notting Hill, London, W11  
Gross Internal Area 828 sq ft, 76.9 m<sup>2</sup>

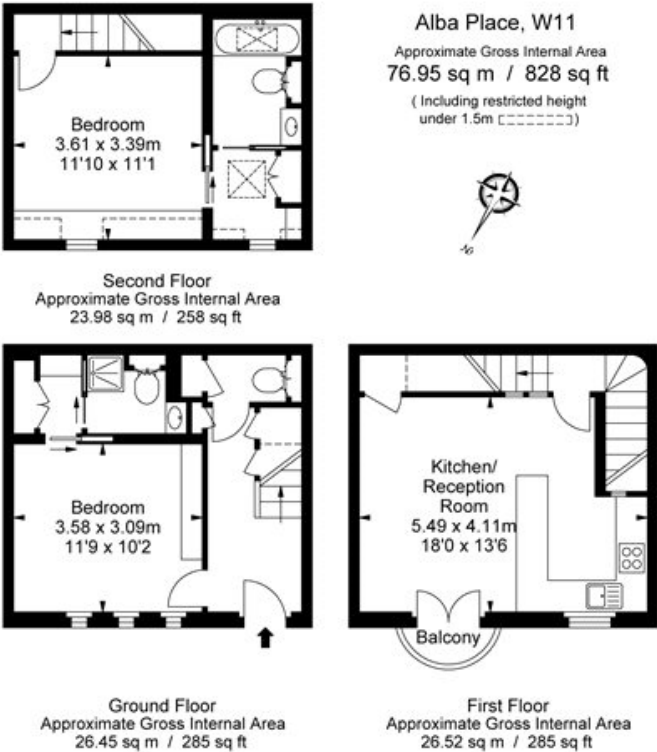
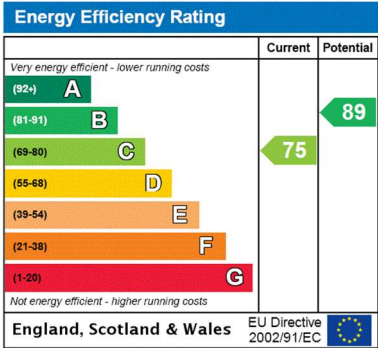


ILLUSTRATION FOR IDENTIFICATION PURPOSES ONLY  
ALL MEASUREMENTS ARE MAXIMUM AND INCLUDE WINDOW BAYS AND WARDROBES WHERE APPLICABLE  
THIS PLAN MUST NOT BE REPRODUCED BY ANY OTHER PERSON WITHOUT PERMISSION



**Important notice** Savills, their clients and any joint agents give notice that: 1. They are not authorised to make or give any representations or warranties in relation to the property either here or elsewhere, either on their own behalf or on behalf of their client or otherwise. They assume no responsibility for any statement that may be made in these particulars. These particulars do not form part of any offer or contract and must not be relied upon as statements or representations of fact. 2. Any areas, measurements or distances are approximate. The text, images and plans are for guidance only and are not necessarily comprehensive. It should not be assumed that the property has all necessary planning, building regulation or other consents and Savills have not tested any services, equipment or facilities. Prospective tenants must satisfy themselves by inspection or otherwise. Please note that the local area may be affected by aircraft noise, you should make your own enquiries regarding any noise within the area before you make any offer.

\*There are different rules and fees for different tenancy types. For details of our fees and charges to go to Savills.co.uk/tenant-fees. For more detailed information read our applicant guide at savills.co.uk/applicant-guide. Hard copy available on request. . 20200123LRNO

