



A modern mews house that offers excellent living space

Queensborough Mews, Bayswater, London, W2

£692.31 pw (£3,000 pcm) plus fees apply, Furnished
Available now

savills

- **Mews House**
- **Roof Terrace**
- **Balcony**
- **Wooden flooring**
- **Separate kitchen**
- **Flexible living space**

Local Information

Queensborough Mews is a very quiet road between Porchester Terrace and Queensborough Terrace located 0.3 miles from Queensway Underground station (Central Line) and Bayswater station (Circle Line and District Line).

About this property

This modern mews house offers excellent living space and fantastic outside space in a secluded location close to Hyde Park. The house is in very good condition with wooden flooring and neutral decoration throughout. The ground floor is made up of a bedroom and en-suite bathroom, on the first floor there is a fitted kitchen and a reception room which opens onto a balcony, above this are two bedrooms and a bathroom and on the top floor there is a conservatory which leads out onto a spacious roof terrace.

Furnishing

Furnished

Local Authority

City Of Westminster
Council Tax Band = E

Energy Performance

EPC Rating = D

Viewing

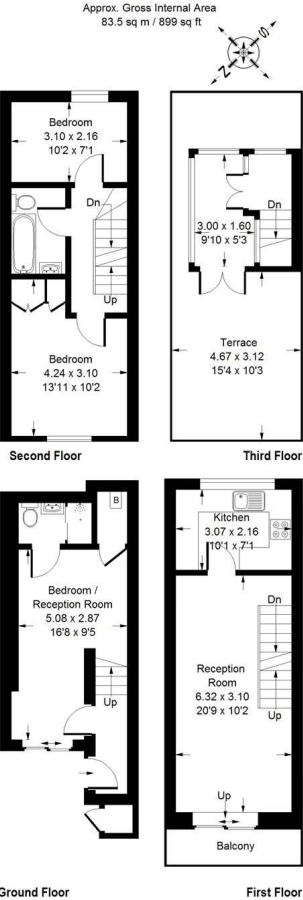
All viewings will be accompanied and are strictly by prior arrangement through Savills Notting Hill Lettings Office.
Telephone: +44 (0) 20 7727 5751.



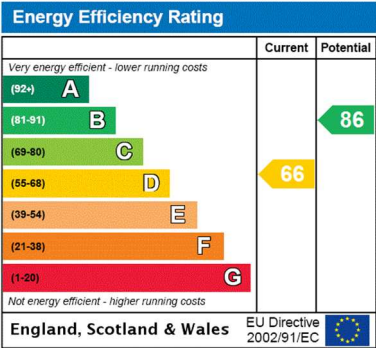


Queensborough Mews, Bayswater, London, W2
Gross Internal Area 899 sq ft, 83.5 m²

Queensborough Mews, W2



Whilst every attempt has been made to ensure the accuracy of the floor plan, measurements are approximate and not to scale.
No guarantee is given as to the total square footage of the property based on the plan. Figures given are for guidance.
Plan is for illustration purposes only, not to be used for valuation.



Important notice Savills, their clients and any joint agents give notice that: 1. They are not authorised to make or give any representations or warranties in relation to the property either here or elsewhere, either on their own behalf or on behalf of their client or otherwise. They assume no responsibility for any statement that may be made in these particulars. These particulars do not form part of any offer or contract and must not be relied upon as statements or representations of fact. 2. Any areas, measurements or distances are approximate. The text, images and plans are for guidance only and are not necessarily comprehensive. It should not be assumed that the property has all necessary planning, building regulation or other consents and Savills have not tested any services, equipment or facilities. Prospective tenants must satisfy themselves by inspection or otherwise. Please note that the local area may be affected by aircraft noise, you should make your own enquiries regarding any noise within the area before you make any offer.

*There are different rules and fees for different tenancy types. For details of our fees and charges please go to [Savills.co.uk/tenant-fees](https://www.savills.co.uk/tenant-fees). For more detailed information read our applicant guide at [savills.co.uk/applicant-guide](https://www.savills.co.uk/applicant-guide).
Hard copy available on request. . 20201009LRNO

