



An exceptional two bedroom apartment near Paddington

Gloucester Terrace, Bayswater, London, W2

£950 pw (£4,116.67 pcm) plus fees apply, Unfurnished
Available from 01.07.2019

savills

- Two double bedrooms
- Two bathrooms
- Renovated to the highest standard
- Wooden flooring
- Roof terrace
- Excellent light

Local Information

Paddington station is nearby (0.3 miles away) providing access to mainline train services including the Heathrow Express. Lancaster Gate Underground station is 0.4 miles away (Central Line) and Hyde Park is 0.4 miles from the property.

About this property

This beautifully presented apartment is situated on the fourth floor of a handsome period building on Gloucester Terrace. The flat has excellent entertaining space with floor-to-ceiling windows and wooden flooring in the open-plan reception room. There are two double bedrooms and two bathrooms in addition to a spectacular roof terrace.

Furnishing

Unfurnished

Local Authority

City Of Westminster

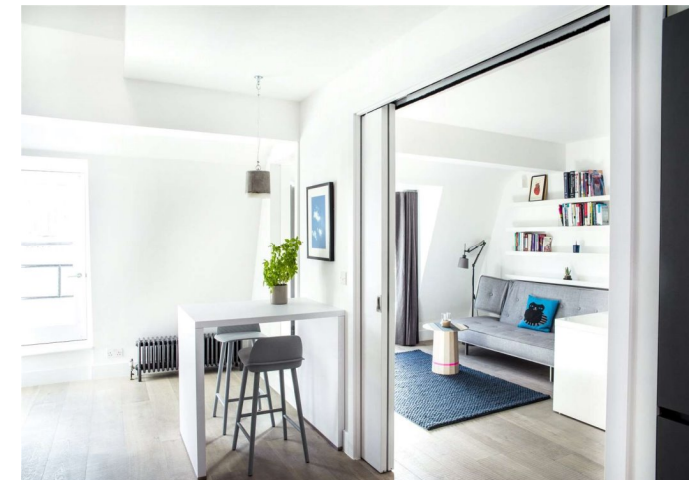
Energy Performance

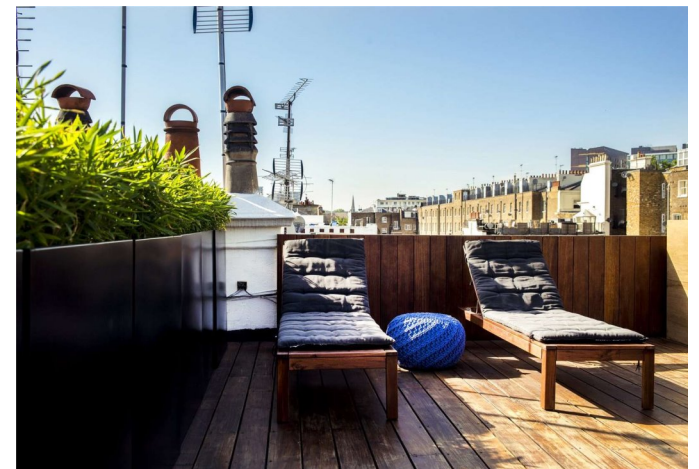
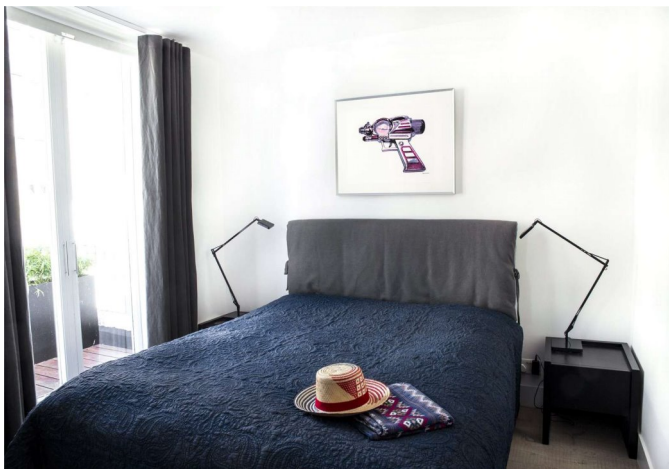
EPC Rating = D

Viewing

All viewings will be accompanied and are strictly by prior arrangement through Savills Notting Hill Lettings Office.

Telephone: +44 (0) 20 7727 5751.





Gloucester Terrace, Bayswater, London, W2
Gross Internal Area 1241 sq ft, 115.3 m²

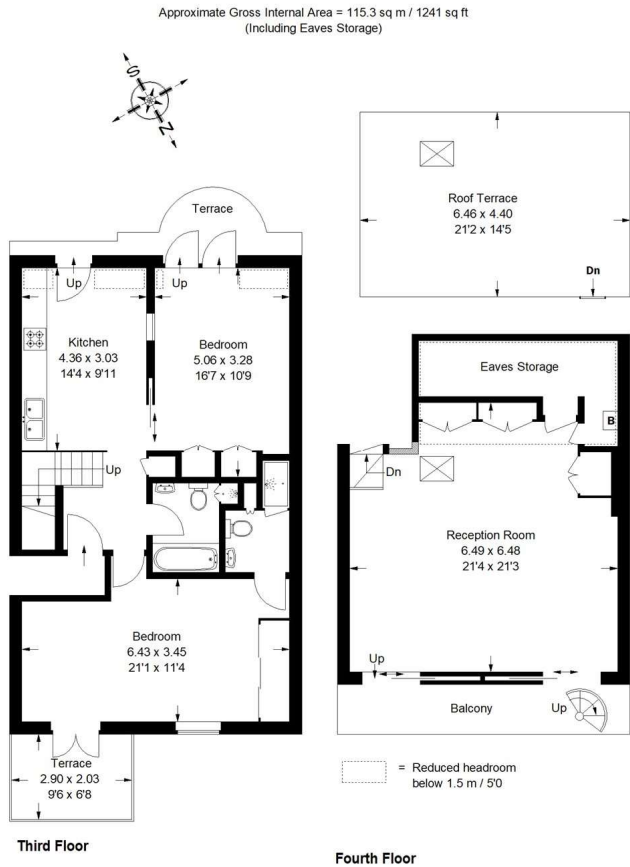
onTheMarket.com

savills

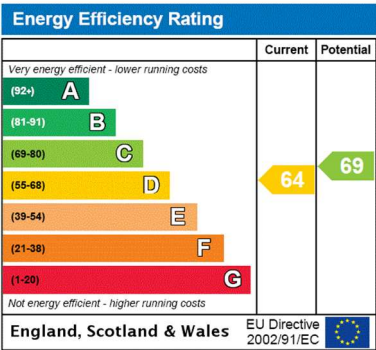
savills.co.uk

Archie Orr Ewing
Notting Hill Lettings
+44 (0) 20 7727 5751
aorrewing@savills.com

Gloucester Terrace, W2



Whilst every attempt has been made to ensure the accuracy of the floor plan, measurements are approximate and not to scale.
No guarantee is given on the total square footage of the property quoted on the plan. Figures given are for guidance.
Plan is for illustration purposes only, not to be used for valuations.



Important notice Savills, their clients and any joint agents give notice that: 1. They are not authorised to make or give any representations or warranties in relation to the property either here or elsewhere, either on their own behalf or on behalf of their client or otherwise. They assume no responsibility for any statement that may be made in these particulars. These particulars do not form part of any offer or contract and must not be relied upon as statements or representations of fact. 2. Any areas, measurements or distances are approximate. The text, images and plans are for guidance only and are not necessarily comprehensive. It should not be assumed that the property has all necessary planning, building regulation or other consents and Savills have not tested any services, equipment or facilities. Prospective tenants must satisfy themselves by inspection or otherwise. Please note that the local area may be affected by aircraft noise, you should make your own enquiries regarding any noise within the area before you make any offer.

*There are different rules and fees for different tenancy types. For details of our fees and charges to go to Savills.co.uk/tenant-fees. For more detailed information read our applicant guide at savills.co.uk/applicant-guide.
Hard copy available on request. . 20190920LRNO



arla | propertymark

PROTECTED