



A top floor apartment in convenient location

32 Carew Road, Northwood, Middlesex, HA6 3NL

Share of Freehold





Top floor apartment • Garage • Large kitchen/diner •  
No onward chain • Good decorative order throughout  
• Convenient location

#### Local information

London is just 16 miles (approx) and is reached by rail from Northwood Metropolitan Line underground railway station (Baker Street 35 minutes approx). The M40 at Uxbridge (5 miles approx). Watford (4 miles approx), and Harrow (6 miles approx) are all accessible by road and offer multiple shopping centres.

Northwood provides a wide range of shops with multiple stores including Waitrose, Boots, Costa Coffee and Baskin Robbins. There is an interesting selection of quality restaurants serving multi-cultural cuisine and several coffee/snack bars.

Sports and fitness enthusiasts are well catered for with clubs for Golf, Tennis, Football, Cricket and extensive facilities within the David Lloyd Sports and Social Club.

Schooling in the area is excellent with a choice of state and private schools.

#### About this property

32 Carew Road is situated in an attractive development of purpose built apartments, set within well maintained communal gardens and conveniently located, in an attractive tree lined road, about half a mile from Northwood town centre and Metropolitan line railway station.

The apartment is in good decorative order throughout and offers stunning views from the kitchen/diner and sitting room. The accommodation features a good sized entrance hall, spacious sitting/dining room,

bring and spacious fitted kitchen, two bedrooms, including a master bedroom with bay window and en suite bathroom. There is also a separate family bathroom.

The property also has the benefit of a garage en bloc and no upper chain.

#### Tenure

Share of Freehold

#### Local Authority

London Borough of Hillingdon

EPC rating = C

#### Viewing

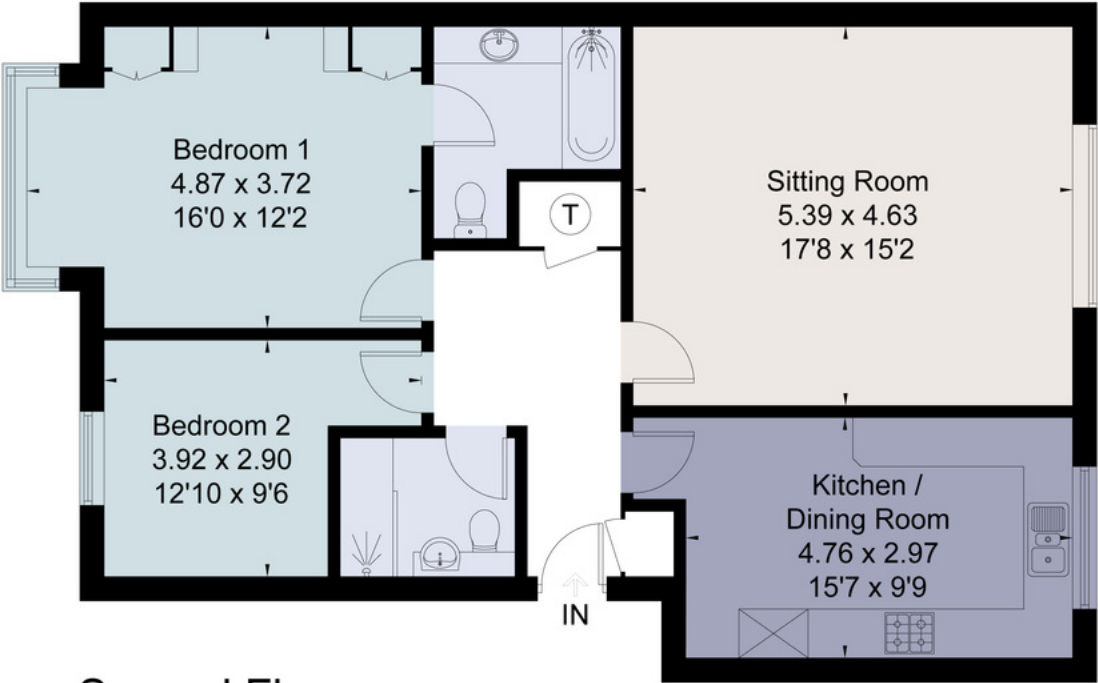
Strictly by appointment with Savills





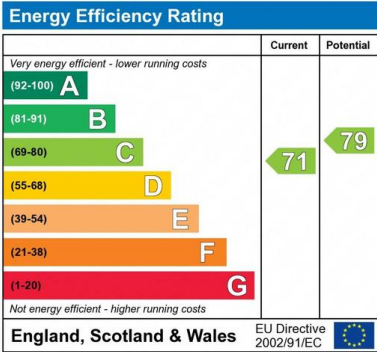


Approximate Area = 88.7 sq m / 955 sq ft  
Including Limited Use Area (1.5 sq m / 16 sq ft)  
For identification only. Not to scale.  
© Fourwalls Group



Second Floor

Surveyed and drawn in accordance with the International Property Measurement Standards (IPMS 2: Residential)  
fourwalls-group.com 250783



**Important notice:** Savills, their clients and any joint agents give notice that 1: They are not authorised to make or give any representations or warranties in relation to the property either here or elsewhere, either on their own behalf or on behalf of their client or otherwise. They assume no responsibility for any statement that may be made in these particulars. These particulars do not form part of any offer or contract and must not be relied upon as statements or representations of fact. 2: Any areas, measurements or distances are approximate. The text, photographs and plans are for guidance only and are not necessarily comprehensive. It should not be assumed that the property has all necessary planning, building regulation or other consents and Savills have not tested any services, equipment or facilities. Purchasers must satisfy themselves by inspection or otherwise. 02022062 Job ID: 141234 User initials: RV

