



Detached home with plot of about 0.21 acre

Lantern Cottage, 37 Oxhey Road, Watford, Hertfordshire, WD19 4QG

Freehold



Plot of about 0.21 acre • Potential to extend STPP •
 Gated entrance • Flexible living accommodation • Car
 port • Garage • Four bedrooms

Local information

Oxhey is a central location offering easy access to Watford, M1 motorway 2.5 miles, Northwood 2.5 miles, (Baker Street 30mins) Bushey within 0.5 of a mile, (Euston 20mins). Oxhey offers schooling for all ages in the area along with modern shopping facilities at the Intu shopping centre at Watford.

There is a good selection of schools, both state and private, which include Watford Boys and Girls Grammar Schools, York House, Merchant Taylors, St Margarets, St Hildas and Royal Masonic Girls School to name a few.

About this property

An attractive 1920's built detached home of character situated behind a wall with gated entrance and set within a good sized plot of about 0.21 of an acre with a rear garden that extends to about 117'.

The property provides flexible living accommodation arranged over two floors and although is in need of some updating offers great potential for improvement and enlargement subject to the usual planning consents.

To the ground floor the house features two reception rooms including a sitting room with double aspect, bay window and feature brick fireplace. The dining room opens to both the kitchen and a sitting area that has double doors opening to a conservatory which in turn has double doors opening to the rear garden. Off

the kitchen there is a utility/ shower room.

The ground floor accommodation is completed by a cloakroom and double bedroom with a range of fitted wardrobes and en suite toilet with wash hand basin. To the first floor there are three further bedrooms and a bathroom.

To the front the property is accessed by a shingle driveway that provides off street parking for a number of cars and leads to a car port and garage.

To the rear the garden extends to a depth of about 117' with a patio leading to an expanse of lawn bordered by a wide variety of shrubs, plants and trees that provides a high degree of privacy.

Tenure

Freehold

Local Authority

Watford Borough Council

EPC rating = E

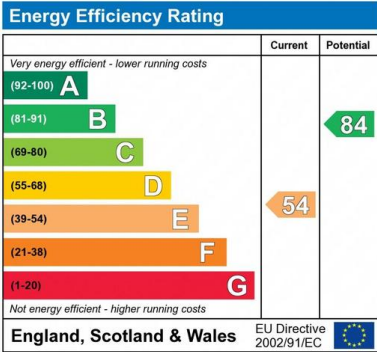
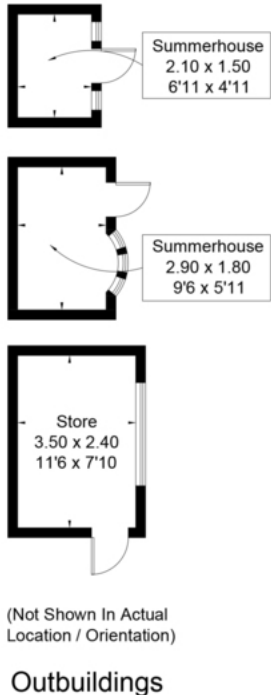
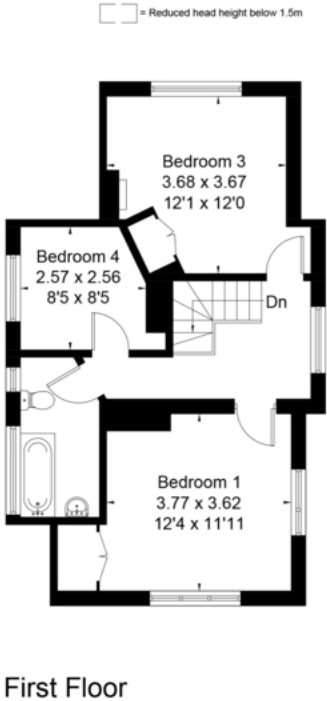
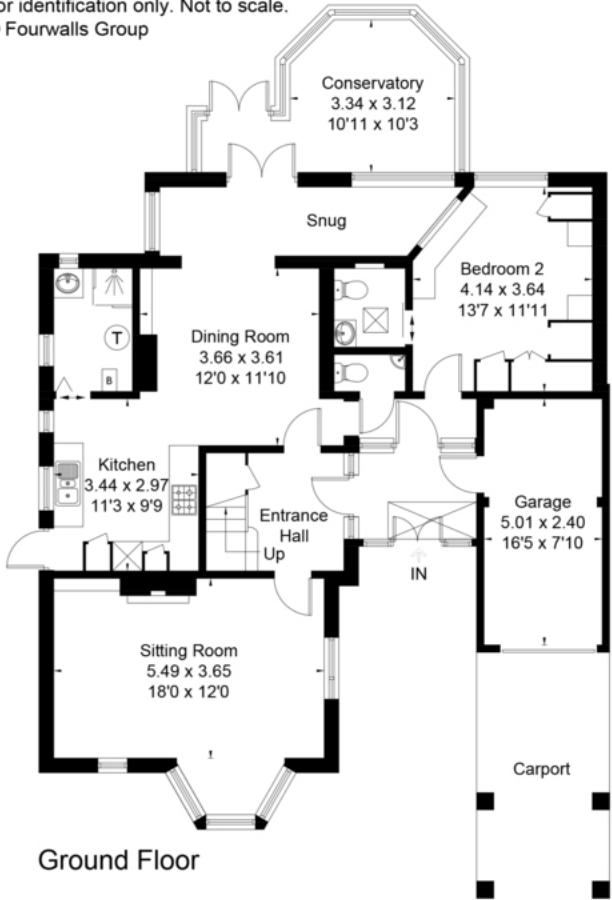
Viewing

Strictly by appointment with Savills





Approximate IPMS2 Floor Area = 156.7 sq m / 1687 sq ft
Garage = 12 sq m / 129 sq ft
Limited Use Area = 3.8 sq m / 41 sq ft
Outbuildings = 16.9 sq m / 182 sq ft
For identification only. Not to scale.
© Fourwalls Group



Important notice: Savills, their clients and any joint agents give notice that 1: They are not authorised to make or give any representations or warranties in relation to the property either here or elsewhere, either on their own behalf or on behalf of their client or otherwise. They assume no responsibility for any statement that may be made in these particulars. These particulars do not form part of any offer or contract and must not be relied upon as statements or representations of fact. 2: Any areas, measurements or distances are approximate. The text, photographs and plans are for guidance only and are not necessarily comprehensive. It should not be assumed that the property has all necessary planning, building regulation or other consents and Savills have not tested any services, equipment or facilities. Purchasers must satisfy themselves by inspection or otherwise. 91021172 Job ID: 138731 User initials: RV