



Charming two-bedroom flat in an ideal location between the commons

Leathwaite Road, London, SW11

£575,000 Share of Freehold



Two bedrooms • Open-plan reception/kitchen • Balcony • Natural light throughout

Local Information

Leathwaite Road is a popular residential road, located between the commons. It is close to the Northcote Road and its extensive range of shops, restaurants and wine bars. The expanses of both Wandsworth and Clapham Commons are close at hand.

Transport is excellent, with both Clapham Junction Station approximately 0.6 miles away providing mainline services and Clapham South underground station approximately 1.1 miles away providing Northern line services nearby.

The area is also served by numerous buses which can take you into central London as well as Putney and Richmond.

About this property

Located just off the open expanses of Clapham Common sits this brilliant two-bedroom flat with a balcony.

As you enter the flat, the spacious open-plan reception and kitchen can be found to the right, boasting large bay windows allowing natural light to fill the space, and shelving units along one wall maximising the storage space. The kitchen benefits from modern fitted appliances and direct access onto the balcony, which has enough space for a table and chairs.

Located in the centre of the property is the second bedroom, which can also be used as a study and hosts built-in storage units to one side. Towards the rear is the principal bedroom with further storage units and the bathroom complete with a joint shower/bath.

Tenure

Share of Freehold

Local Authority

Wandsworth

Energy Performance

EPC Rating = C

Viewing

All viewings will be accompanied and are strictly by prior arrangement through Savills Northcote Road Office. Telephone: +44 (0) 20 3428 2222.



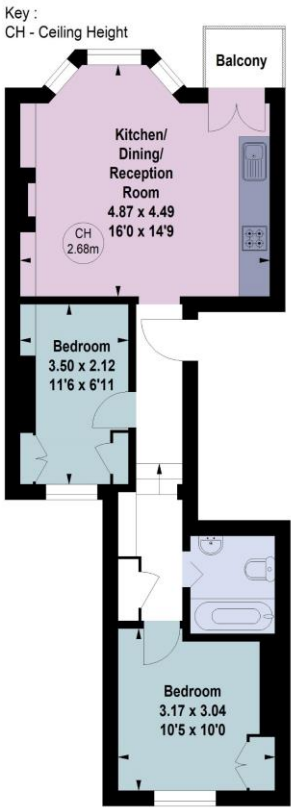


Leathwaite Road, London, SW11
Gross Internal Area 511 sq ft, 47.5 m²

Adam Camplin
Northcote Road
+44 (0) 20 3428 2222
adam.camplin@savills.com

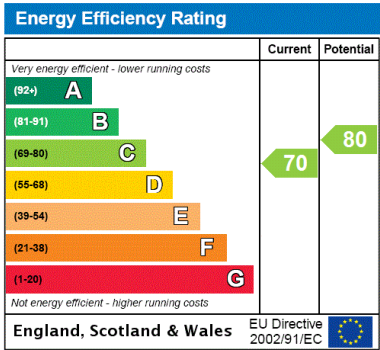
 nTheMarket.com |  savills | savills.co.uk

Leathwaite Road, SW11
Gross internal area (approx) 47.47 sq m / 511 sq ft



First Floor

For Identification Only. Not To Scale.
© Click London Limited



Important Notice Savills, its clients and any joint agents give notice that 1: They are not authorised to make or give any representations or warranties in relation to the property either here or elsewhere, either on their own behalf or on behalf of their client or otherwise. They assume no responsibility for any statement that may be made in these particulars. These particulars do not form part of any offer or contract and must not be relied upon as statements or representations of fact. 2: Any areas, measurements or distances are approximate. The text, photographs and plans are for guidance only and are not necessarily comprehensive. It should not be assumed that the property has all necessary planning, building regulation or other consents and Savills have not tested any services, equipment or facilities. Purchasers must satisfy themselves by inspection or otherwise. 20210928ANTS

