



One bedroom flat located nearby Clapham Common

Lavender Hill, London, SW11

£425,000 Leasehold



Open-plan reception/dining room/kitchen • One bedroom • One bathroom

Local Information

Ideally positioned on Lavender Hill, close to the junction of Queenstown Road, this flat is a short stroll from the shops, retail boutiques, cafes and restaurants of Lavender Hill and the celebrated Northcote Road.

The area has many local schools nearby and is spoilt for parklands with the nearby Clapham Common providing over 200 acres of beautiful green open spaces including three ponds and various sporting amenities. Transport links are excellent with Queenstown Road and Wandsworth Road Overground Stations. Clapham Junction Station and Clapham Common Underground Station (Northern Line) are also nearby.

About this property

This wonderful one bedroom flat is located on the third floor of an ideally placed period building. Upon entrance, the sizeable reception room is found with two large windows allowing natural light to fill the room and a cosy seating area. The open-plan kitchen has fully integrated appliances, plenty of built in storage and space for a large breakfast/dining table. The light and spacious double bedroom has plenty of built in storage and the bathroom is located nearby with further storage.

Tenure

Leasehold

Local Authority

Wandsworth

Energy Performance

EPC Rating = E

Viewing

All viewings will be accompanied and are strictly by prior arrangement through Savills Northcote Road Office. Telephone: +44 (0) 20 3428 2222.





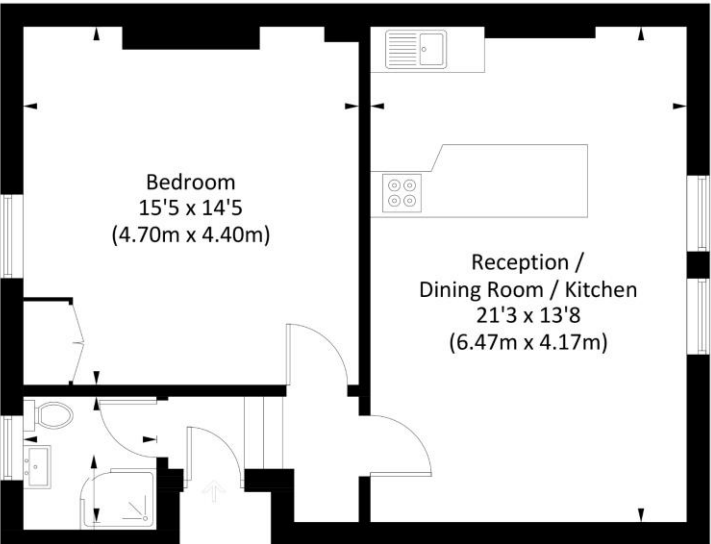
Lavender Hill, London, SW11
Gross Internal Area 598 sq ft, 55.6 m²

Adam Camplin
Northcote Road
+44 (0) 20 3428 2222
adam.camplin@savills.com

 |  savills | savills.co.uk

LAVENDER HILL, SW11

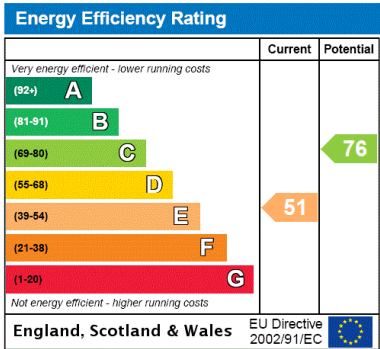
Approx. gross internal area 598 Sq Ft. / 55.6 Sq M



Bathroom
5'9 x 5'6
(1.75m x 1.67m)

Third Floor

Illustration for identification purposes only, measurements are approximate,
not to scale. FloorplansUsketch.com © 2020 (ID701774)



Important Notice Savills, its clients and any joint agents give notice that 1: They are not authorised to make or give any representations or warranties in relation to the property either here or elsewhere, either on their own behalf or on behalf of their client or otherwise. They assume no responsibility for any statement that may be made in these particulars. These particulars do not form part of any offer or contract and must not be relied upon as statements or representations of fact. 2: Any areas, measurements or distances are approximate. The text, photographs and plans are for guidance only and are not necessarily comprehensive. It should not be assumed that the property has all necessary planning, building regulation or other consents and Savills have not tested any services, equipment or facilities. Purchasers must satisfy themselves by inspection or otherwise. 20201022OLCG

