



# Split level garden flat, near Northcote Road

Lavender Sweep, London, SW11

Share of Freehold



Two bedrooms • Two bathrooms • Reception room • Kitchen/dining room • Garden • Cellar

**Local information**

Lavender Sweep is situated just off Lavender Hill and is close to the shops bars and restaurants of Northcote Road. The open expanse of Clapham Common is also very close by.

Transport links are good with Clapham Junction providing direct services into both Victoria and Waterloo along with numerous bus routes north of the river. Dolphin School and Belleville Primary School are situated within 0.3 miles from Lavender Sweep.

**About this property**

This fantastic split level flat is set over two floors. When walking in on your right is a wonderful light and airy reception area with large windows letting a generous amount of light in. Situated off the hallway is a bedroom, next to this is a bathroom. Continuing down the hallway leads you to the kitchen and dining room, a spacious, well equipped area. Through the kitchen is a lovely garden area perfect for al fresco dining. Upstairs is the second double bedroom with its own en-suite.

**Tenure**

Share of Freehold

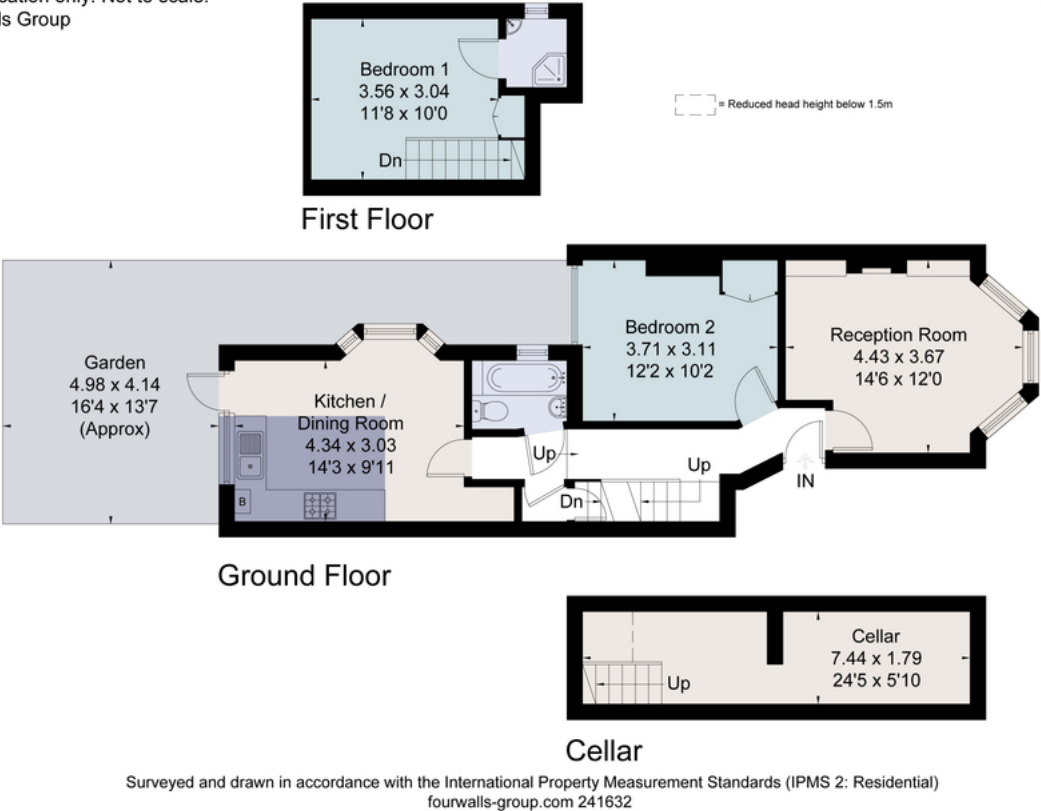
**Lavender Sweep, London, SW11**  
**Gross internal area (approx) 859 sq. ft.**



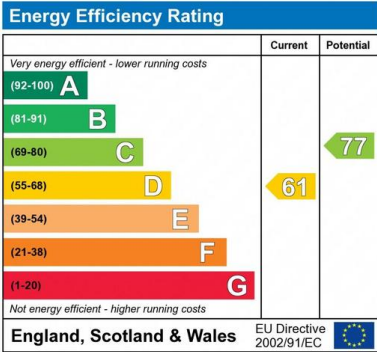
savills.co.uk

**Drew Zendra**  
Savills Northcote Road  
**020 3428 2222**  
dzendra@savills.com

Approximate Area = 79.8 sq m / 859 sq ft  
(Including Cellar)  
Including Limited Use Area (0.9 sq m / 10 sq ft)  
For identification only. Not to scale.  
© Fourwalls Group



Surveyed and drawn in accordance with the International Property Measurement Standards (IPMS 2: Residential)  
fourwalls-group.com 241632



**Important notice:** Savills, their clients and any joint agents give notice that 1: They are not authorised to make or give any representations or warranties in relation to the property either here or elsewhere, either on their own behalf or on behalf of their client or otherwise. They assume no responsibility for any statement that may be made in these particulars. These particulars do not form part of any offer or contract and must not be relied upon as statements or representations of fact. 2: Any areas, measurements or distances are approximate. The text, photographs and plans are for guidance only and are not necessarily comprehensive. It should not be assumed that the property has all necessary planning, building regulation or other consents and Savills have not tested any services, equipment or facilities. Purchasers must satisfy themselves by inspection or otherwise. 91021121 Job ID: 138558 User Initials: OCG

