



# A stunning house with a west facing garden

Alfriston Road, London, SW11

Freehold



Kitchen/Family room • Reception room • Five bedrooms • Two bathrooms • Cellar • Garden

### Local information

Alfriston Road is ideally located Between the Commons and close to the excellent shops and restaurants on Northcote Road. There are many good schools in the area and is well placed for the catchment areas. Access north of the river can be achieved from Clapham Junction linking to both Victoria and Waterloo. The wide open spaces of Wandsworth and Clapham Common are also nearby.

### About this property

Over 19ft wide, this period house has been creatively re designed by the current owners creating a wonderful entertaining area that gives access to a 32 ft west facing garden. Approached through the front garden this wonderful house comprises a generous entrance hall the leads through to the extended kitchen breakfast room with modern high gloss units that have been designed to allow for a large dining table as well as a seating area.

In turn the kitchen gives access to the west facing secluded garden that has been part paved and laid to lawn creating a well-balanced space. To the front of the house is a spacious reception room with a high ceiling and a large fireplace. On the first floor are three double bedrooms all with fitted wardrobes, a large shower room and a further bedroom.

The top floor boasts the principal bedroom complete with en-suite bathroom, built in wardrobes and a Juliet balcony with French doors. The property also benefits from a cellar that is useful for secondary storage.

### Tenure

Freehold

### Local Authority

London Borough of Wandsworth

EPC rating = C

### Viewing

Strictly by appointment with Savills







Alfriston Road, London, SW11  
Gross internal area (approx) 2088 sq. ft.

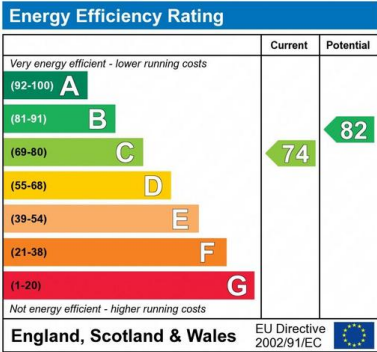
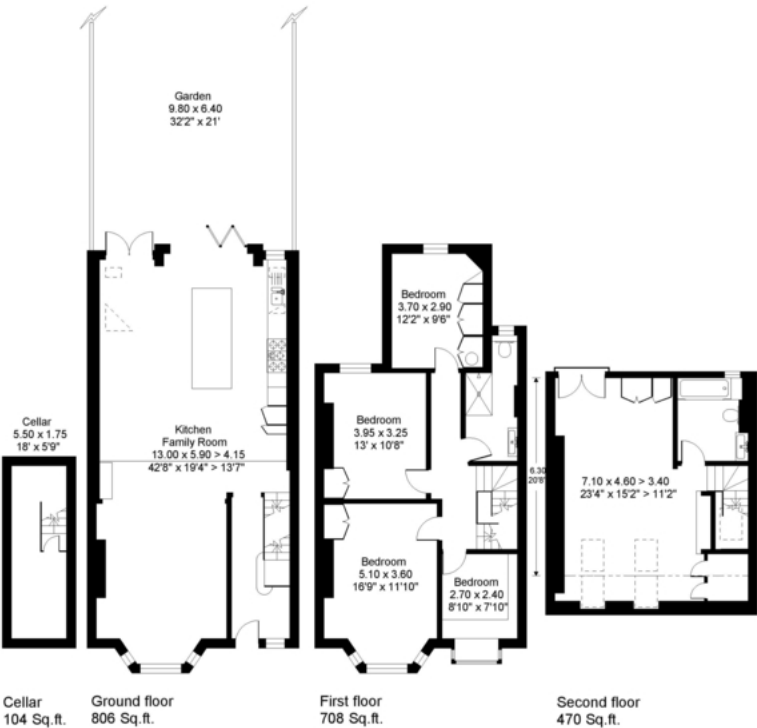
Chris Lewis  
Savills Northcote Road  
020 3428 2222  
CBLewis@savills.com



savills

savills.co.uk

Alfriston Road, SW11  
Gross internal area (approx.):  
194.0 sq.m. (2088 sq.ft.)  
For identification purposes only. Not to scale.  
Floorplanners ©



**Important notice:** Savills, their clients and any joint agents give notice that 1: They are not authorised to make or give any representations or warranties in relation to the property either here or elsewhere, either on their own behalf or on behalf of their client or otherwise. They assume no responsibility for any statement that may be made in these particulars. These particulars do not form part of any offer or contract and must not be relied upon as statements or representations of fact. 2: Any areas, measurements or distances are approximate. The text, photographs and plans are for guidance only and are not necessarily comprehensive. It should not be assumed that the property has all necessary planning, building regulation or other consents and Savills have not tested any services, equipment or facilities. Purchasers must satisfy themselves by inspection or otherwise. 02029052 Job ID: 146190 User initials: OCG

