



A beautifully bright two bedroom flat.

Clapham Old Town, The Metal Works SW4

Leasehold



Two Bedrooms • 2.5 Bathrooms • Kitchen/Reception Room

Local information

The Metal Works is situated in the heart of Clapham Old Town and benefits from the wonderful shops, wine bars and restaurants along The Pavement and in Clapham. The open expanses of Clapham Common are a short walkaway with its tennis courts, a bowling green, cricket nets and a café.

For transport, Clapham Common Underground Station (Northern Line) offers services into The City and West End and Wandsworth Road Overground Station also provides services into London Victoria and London Waterloo. The area further benefits from an excellent selection of schools.

About this property

A beautifully modern flat with two bedrooms and bathrooms is a fantastic flat located in The Metal Works. As you enter the property you are welcomed with a wonderfully presented, spacious open kitchen and reception room.

As you walk through the flat a bedroom with its own bathroom is situated on your left and on your right a larger bathroom following onto another light and airy bedroom further down the hallway with its own patio. The property also benefits from an extra cloakroom.

Tenure

Leasehold

Local Authority

London Borough of Lambeth

EPC rating = E

Viewing

Strictly by appointment with Savills





Clapham Old Town, The Metal Works SW4
Gross internal area (approx) 1010 sq.ft.



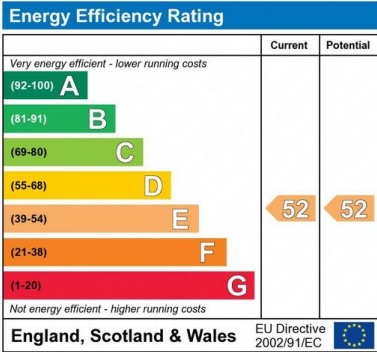
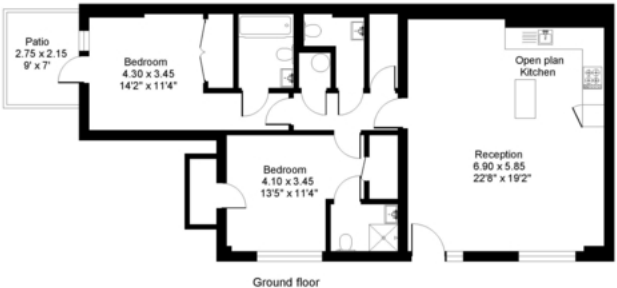
savills

savills.co.uk

Drew Zendra
Savills Northcote Road
020 3428 2222
dzendra@savills.com

Old Town, SW4

Gross internal area (approx.):
93.8 sq.m. (1010 sq.ft.)
For identification purposes only. Not to scale.
Floorplanners ©



Important notice: Savills, their clients and any joint agents give notice that **1:** They are not authorised to make or give any representations or warranties in relation to the property either here or elsewhere, either on their own behalf or on behalf of their client or otherwise. They assume no responsibility for any statement that may be made in these particulars. These particulars do not form part of any offer or contract and must not be relied upon as statements or representations of fact. **2:** Any areas, measurements or distances are approximate. The text, photographs and plans are for guidance only and are not necessarily comprehensive. It should not be assumed that the property has all necessary planning, building regulation or other consents and Savills have not tested any services, equipment or facilities. Purchasers must satisfy themselves by inspection or otherwise. 91029042 Job ID: 136655 User initials: OCG

