



A spacious two bedroom apartment on the second floor of Sesame Apartments

Sesame Apartments, 4 Holman Road, Battersea, London, SW11

£1,950 pcm plus fees apply, Unfurnished
Available from 18.05.2020



Two bedrooms • Two bathrooms • Reception room • Kitchen • Concierge • Communal roof terrace

Local Information

Holman Road is located in between Battersea Park Road and Lombard Road, with easy access across the river to Chelsea or Clapham Junction. Battersea Park is also a short walk away.

About this property

A spacious, brand newly built two bedroom, two bathroom apartment on the second floor of Sesame Apartments.

Located on Holman Road in between Lombard Road and Battersea Park Road which is an excellent spot with easy access to Chelsea or Clapham Junction.

The property is located on the second floor with lovely views onto the park from the reception room. The accommodation comprises master bedroom and en suite bathroom, second double bedroom, second bathroom, reception room and kitchen. The property benefits from a porter and excellent security.

Furnishing

Unfurnished

Local Authority

Wandsworth Borough Council
Council Tax Band = D

Energy Performance

EPC Rating = C

Viewing

All viewings will be accompanied and are strictly by prior arrangement through Savills Battersea Lettings Office.
Telephone: +44 (0) 20 3430 6900.

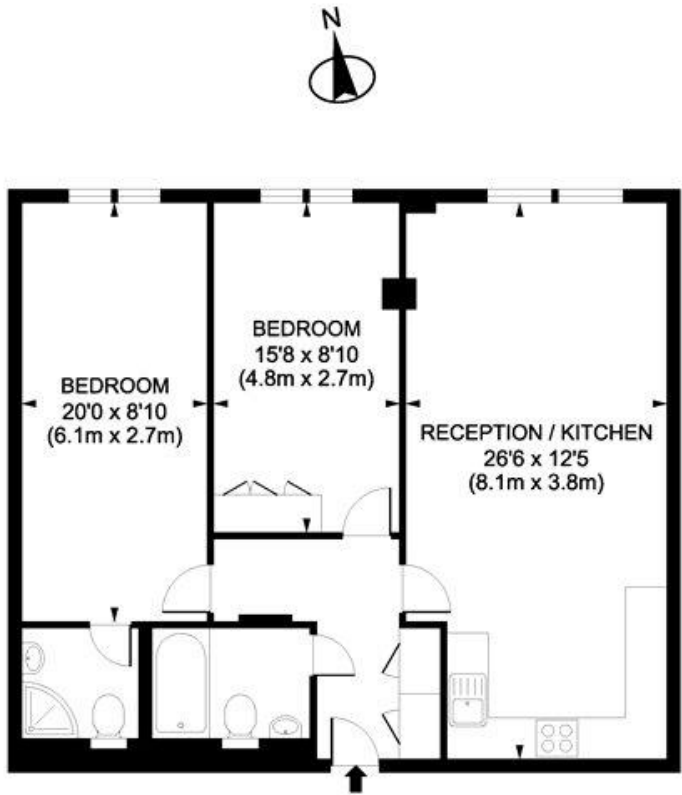




Sesame Apartments, 4 Holman Road, Battersea, London, SW11
Gross Internal Area 818 sq ft, 76 m²

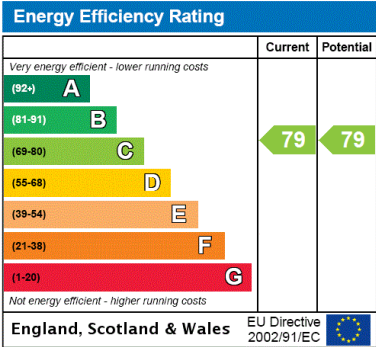
Ollie Brooks-Ward
Battersea Lettings
+44 (0) 20 3430 6900
oliver.brooksward@savills.com

[onTheMarket.com](#) | [savills](#) | [savills.co.uk](#)



SECOND FLOOR

Holman Road, SW11
Gross internal area 818 sq ft/76 sq metres
©photosandfloorplans.com



Important notice Savills, their clients and any joint agents give notice that: 1. They are not authorised to make or give any representations or warranties in relation to the property either here or elsewhere, either on their own behalf or on behalf of their client or otherwise. They assume no responsibility for any statement that may be made in these particulars. These particulars do not form part of any offer or contract and must not be relied upon as statements or representations of fact. 2. Any areas, measurements or distances are approximate. The text, images and plans are for guidance only and are not necessarily comprehensive. It should not be assumed that the property has all necessary planning, building regulation or other consents and Savills have not tested any services, equipment or facilities. Prospective tenants must satisfy themselves by inspection or otherwise. Please note that the local area may be affected by aircraft noise, you should make your own enquiries regarding any noise within the area before you make any offer.

*There are different rules and fees for different tenancy types. For details of our fees and charges to go to [Savills.co.uk/tenant-fees](#). For more detailed information read our applicant guide at [savills.co.uk/applicant-guide](#).
Hard copy available on request. . 20200318SEND

