

A stunning, contemporary three bedroom furnished flat in this sought after development with beautiful views onto the River Thames gym.

Commodore House, Battersea Reach, London, SW18

£700 pw (£3,033.33 pcm) plus fees apply, Furnished
Available from 30.11.2019



2 bedrooms • Study • Open planned kitchen / reception room • 2 bathrooms • Balcony • River Views • Concierge

Local Information

Battersea Reach is conveniently located on the south side of Wandsworth bridge. The closest overland rail station is Wandsworth Town, one stop away from Clapham Junction and travels directly to London Waterloo. Buses 170 to Victoria and Richmond 295 travels to Fulham.

Discription

A contemporary two bedroom furnished flat in this sought after development with views onto the River Thames and a 24 hour on site residents gym. This flat offers riverside living with two double bedrooms, two bathrooms, an open plan kitchen/reception room with a study/3rd bedroom off the reception room. There is a large balcony surrounding the flat apartment.

Furnishing

Furnished

Local Authority

Wandsworth Borough Council

Energy Performance

EPC Rating = C

Viewing

All viewings will be accompanied and are strictly by prior arrangement through Savills Waterfront Lettings Office.

Telephone: +44 (0) 20 3430 6890.

Commodore House, Battersea Reach, London, SW18

Gross Internal Area 1184 sq ft, 110 m²



savills

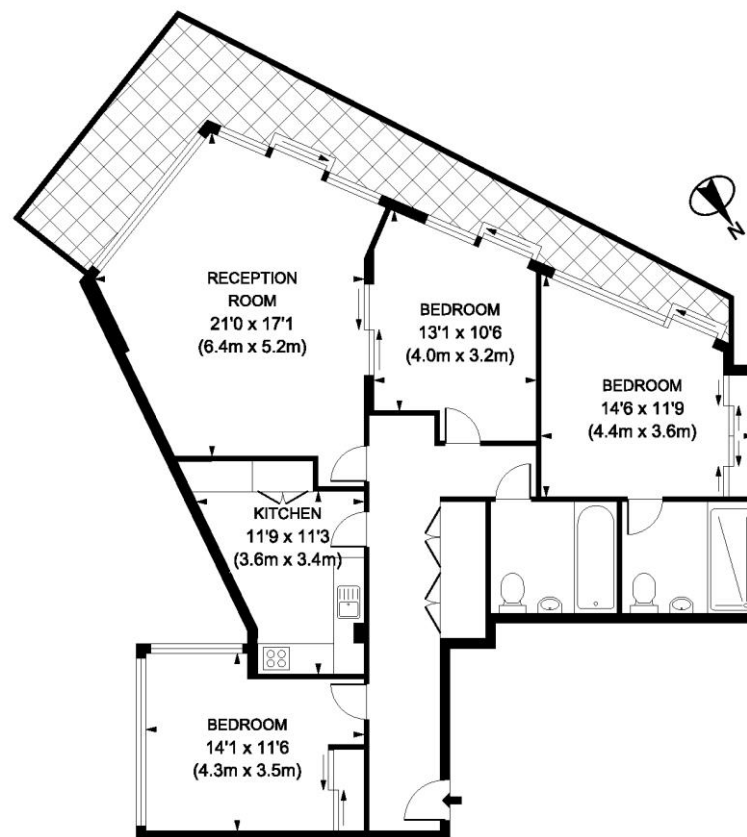
savills.co.uk

Max Da Silva

Waterfront Lettings

+44 (0) 20 3430 6903

max.dasilva@savills.com



EIGHTH FLOOR

Battersea Reach, SW18

Gross Internal Area 1184 sq ft 110 sq meters

Property360. co.uk 2009 REF : HIP006211

Energy Efficiency Rating		
	Current	Potential
Very energy efficient - lower running costs		
(92+) A		
(81-91) B		
(69-80) C	77	79
(55-68) D		
(39-54) E		
(21-38) F		
(1-20) G		
Not energy efficient - higher running costs		
England, Scotland & Wales		EU Directive 2002/91/EC

Important notice Savills, their clients and any joint agents give notice that: 1. They are not authorised to make or give any representations or warranties in relation to the property either here or elsewhere, either on their own behalf or on behalf of their client or otherwise. They assume no responsibility for any statement that may be made in these particulars. These particulars do not form part of any offer or contract and must not be relied upon as statements or representations of fact. 2. Any areas, measurements or distances are approximate. The text, images and plans are for guidance only and are not necessarily comprehensive. It should not be assumed that the property has all necessary planning, building regulation or other consents and Savills have not tested any services, equipment or facilities. Prospective tenants must satisfy themselves by inspection or otherwise. Please note that the local area may be affected by aircraft noise, you should make your own enquiries regarding any noise within the area before you make any offer.

*There are different rules and fees for different tenancy types. For details of our fees and charges to go to Savills.co.uk/tenant-fees. For more detailed information read our applicant guide at savills.co.uk/applicant-guide.

Hard copy available on request. . 20191017SEND

