



A well-appointed one bedroom apartment in this brand new riverside development.

Albert Embankment, Lambeth, London, SE1

£3,000 pcm plus fees apply, Furnished, Unfurnished



Open plan kitchen/reception room • Fifth floor • Private balcony • 1 bedroom • New Build

Local Information

Dumont is situated on Albert Embankment with excellent transport link in Central London. Local stations such as Vauxhall which has access to the Victoria line and South Western national rail service to Waterloo or South West London via Clapham Junction. Alternatively there are local bus routes to Victoria and Waterloo.

About this property

A well-appointed one bedroom apartment in this brand new riverside development.

This apartment offers an open plan kitchen/reception room, private balcony, double bedroom with built in wardrobe and a family bathroom.

Residents benefit from 24 hour concierge, 12th floor residents' lounge, dining room and roof terrace, infinity pool, gym and spa facilities located in The Corniche.

Furnishing

Furnished, Unfurnished

Local Authority

Lambeth

Energy Performance

EPC Rating = To be confirmed

Viewing

All viewings will be accompanied and are strictly by prior arrangement through Savills Waterfront Lettings Office. Telephone: +44 (0) 20 3430 6890.





Albert Embankment, Lambeth, London, SE1
Gross Internal Area 637 sq ft, 59.2 m²

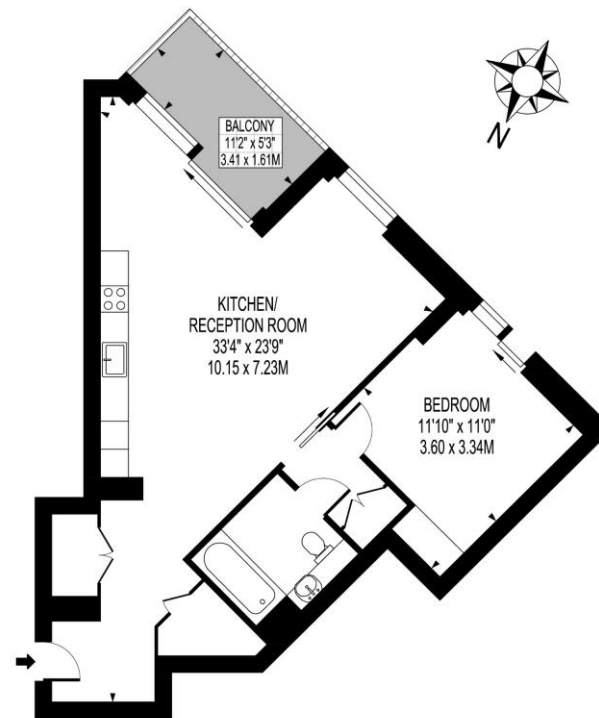
Max Da Silva
Waterfront Lettings
+44 (0) 20 3430 6890
max.dasilva@savills.com



savills

savills.co.uk

DUMONT, ALBERT EMBANKMENT
APPROXIMATE GROSS INTERNAL FLOOR AREA:
637 SQ FT- 59.15 SQ M



FIFTH FLOOR

FOR ILLUSTRATION PURPOSES ONLY

THIS FLOOR PLAN SHOULD BE USED AS A GENERAL OUTLINE FOR GUIDANCE ONLY AND DOES NOT CONSTITUTE IN WHOLE OR IN PART AN OFFER OR CONTRACT. ANY INTENDING PURCHASER OR LESSEE SHOULD SATISFY THEMSELVES BY INSPECTION, SEARCHES, ENQUIRIES AND FULL SURVEY AS TO THE CORRECTNESS OF EACH STATEMENT. ANY AREAS, MEASUREMENTS OR DISTANCES QUOTED ARE APPROXIMATE AND SHOULD NOT BE USED TO VALUE A PROPERTY OR BE THE BASIS OF ANY SALE OR LET.

Important notice Savills, their clients and any joint agents give notice that: 1. They are not authorised to make or give any representations or warranties in relation to the property either here or elsewhere, either on their own behalf or on behalf of their client or otherwise. They assume no responsibility for any statement that may be made in these particulars. These particulars do not form part of any offer or contract and must not be relied upon as statements or representations of fact. 2. Any areas, measurements or distances are approximate. The text, images and plans are for guidance only and are not necessarily comprehensive. It should not be assumed that the property has all necessary planning, building regulation or other consents and Savills have not tested any services, equipment or facilities. Prospective tenants must satisfy themselves by inspection or otherwise. Please note that the local area may be affected by aircraft noise, you should make your own enquiries regarding any noise within the area before you make any offer.

*There are different rules and fees for different tenancy types. For details of our fees and charges go to [Savills.co.uk/tenant-fees](https://www.savills.co.uk/tenant-fees). For more detailed information read our applicant guide at [savills.co.uk/applicant-guide](https://www.savills.co.uk/applicant-guide).
Hard copy available on request. . 20191203SEND

