



Savills are delighted to market this spectacular 4 bedroom apartment in the newly completed Riverwalk development

Building West Riverwalk, 161 Millbank, London, SW1P

£4,750.00 pw (£20,583.33 pcm) plus fees apply, Unfurnished
Available from 05.10.2021



- large open plan reception room
- 24 hour concierge and security
- stunning river views
- two private balconies
- Media Room
- Study
- Parking

Local Information

Riverwalk is situated on the banks of the River Thames in Westminster, a few minutes' walk from Pimlico underground station which provides Victoria line services into Central London.

It is also ideally located for enjoying some of London's best cultural attractions, including the Tate Britain, Houses of Parliament, Westminster Abbey and the bustling South Bank.

About this property

The apartment benefits from far reaching, direct river views to both the West and East of London.

Further benefits include a dedicated media room, separate study and dressing rooms throughout.

The palatial feel of this apartment is really quite special, the combination of circa 4,000 sqft and dual balconies makes this a stand out apartment on London's iconic waterfront.

Furnishing

Unfurnished

Local Authority

City Of Westminster
Council Tax Band = H

Energy Performance

EPC Rating = B

Viewing

All viewings will be accompanied and are strictly by prior arrangement through Savills Waterfront Lettings Office.
Telephone: +44 (0) 203 430 6890.



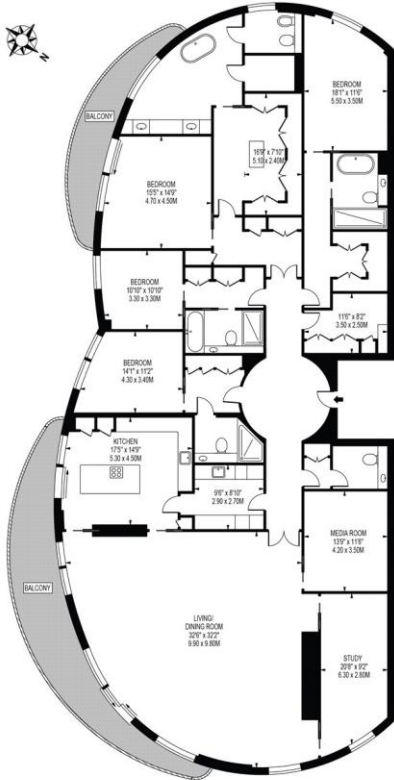


Building West Riverwalk, 161 Millbank, London, SW1P
Gross Internal Area 3877 sq ft, 360.2 m²

Max Da Silva
Waterfront Lettings
+44 (0) 203 430 6890
max.dasilva@savills.com



RIVERWALK WEST
APPROXIMATE GROSS INTERNAL FLOOR AREA: 3877 SQ FT - 360.19 SQ M



FOURTEENTH FLOOR
FOR ILLUSTRATION PURPOSES ONLY
THIS FLOOR PLAN SHOULD BE USED AS A GENERAL OUTLINE FOR GUIDANCE ONLY AND DOES NOT CONSTITUTE IN WHOLE OR IN PART AN OFFER OR CONTRACT.
ANY INTENDING PURCHASER OR LESSEE SHOULD SATISFY THEMSELVES BY INSPECTION, SEARCHES, ENQUIRIES AND FULL SURVEY AS TO THE CORRECTNESS OF EACH STATEMENT.
ANY AREAS, MEASUREMENTS OR DISTANCES QUOTED ARE APPROXIMATE AND SHOULD NOT BE USED TO VALUE A PROPERTY OR BE THE BASIS OF ANY SALE OR LET.

Energy Efficiency Rating		
	Current	Potential
Very energy efficient - lower running costs		
(92+) A	89	89
(81-91) B		
(69-80) C		
(55-68) D		
(39-54) E		
(21-38) F		
(1-20) G		
Not energy efficient - higher running costs		
England, Scotland & Wales		EU Directive 2002/91/EC

Important notice Savills, their clients and any joint agents give notice that: 1. They are not authorised to make or give any representations or warranties in relation to the property either here or elsewhere, either on their own behalf or on behalf of their client or otherwise. They assume no responsibility for any statement that may be made in these particulars. These particulars do not form part of any offer or contract and must not be relied upon as statements or representations of fact. 2. Any areas, measurements or distances are approximate. The text, images and plans are for guidance only and are not necessarily comprehensive. It should not be assumed that the property has all necessary planning, building regulation or other consents and Savills have not tested any services, equipment or facilities. Prospective tenants must satisfy themselves by inspection or otherwise. Please note that the local area may be affected by aircraft noise, you should make your own enquiries regarding any noise within the area before you make any offer.

*There are different rules and fees for different tenancy types. For details of our fees and charges please go to Savills.co.uk/tenant-fees. For more detailed information read our applicant guide at savills.co.uk/applicant-guide.
Hard copy available on request. . 20210723SEND

