

# A three bedroom detached thatched cottage

Little London, Andover, Hampshire, SP11 6JE

 3  2  2

Guide £2,000 p/m, plus fees may apply



# A three bedroom detached thatched cottage

Little London, Andover, Hampshire, SP11 6JE

3  2  2 

Guide £2,000 p/m, plus fees may apply



# A three bedroom detached thatched cottage

Little London, Andover, Hampshire, SP11 6JE



Guide £2,000 p/m, plus fees may apply



## About this property

A three bedroom detached thatched cottage

Unique opportunity to rent this charming home situated in Little London. Off street parking and a garage is included.

This property is available to move in on 15.09.23



# A three bedroom detached thatched cottage

Little London, Andover, Hampshire, SP11 6JE



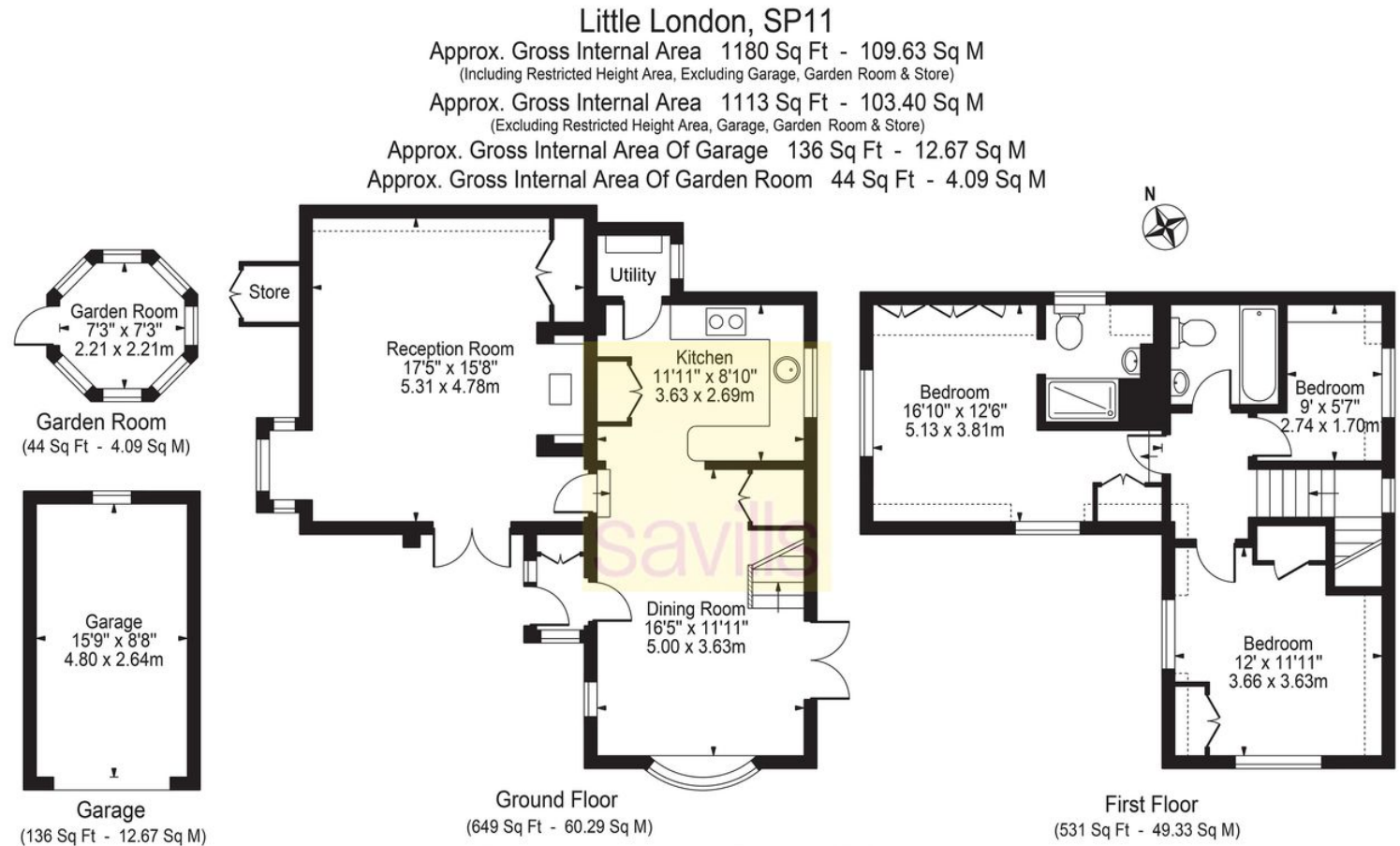
Guide £2,000 p/m, plus fees may apply



## Plans

Approx. gross internal floor area

1180 Sq Ft



For Illustration Purposes Only - Not To Scale

This floor plan should be used as a general outline for guidance only and does not constitute in whole or in part an offer or contract. Any intending purchaser or lessee should satisfy themselves by inspection, searches, enquiries and full survey as to the correctness of each statement. Any areas, measurements or distances quoted are approximate and should not be used to value a property or be the basis of any sale or let.

# A three bedroom detached thatched cottage

Little London, Andover, Hampshire, SP11 6JE



Guide £2,000 p/m, plus fees may apply



## Key Information

### Local Authority

Test Valley

### Council Tax

Band = F

### Furnishing

Furnished, Unfurnished

### Available From

2023-09-15

### Additional Payments

Deposit: £2,309

Holding Deposit: £461.54

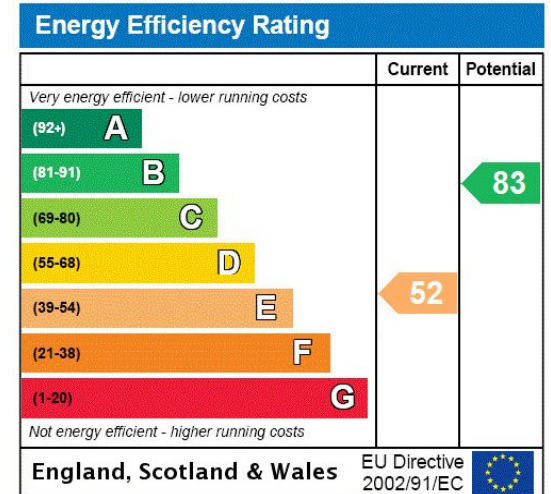
Rent must be paid monthly in advance

### Services & Additional Information

The village is set in a beautiful location nestled in a gentle valley in Northern Hampshire and dates back to around the late 17th century. It is surrounded by farmland and has woodland at the top of the village (Doles Wood) and has a single road that runs to Frenches Farm.

### EPC

EPC Rating = E



# A three bedroom detached thatched cottage

Little London, Andover, Hampshire, SP11 6JE



Guide £2,000 p/m, plus fees may apply



## Enquire



**Ella Woods**

Newbury

+44 (0)7890 421 221

ella.woods@savills.com

## More Information



[View on website](#)



[View Digital Brochure](#)



[Property Search](#)

**Viewing strictly by appointment**

Published: August 2023

Property Ref: RDL230192

powered by  
**FluxPro**

Important Notice: Savills, their clients and any joint agents give notice that: 1. They are not authorised to make or give any representations or warranties in relation to the property either here or elsewhere, either on their own behalf or on behalf of their client or otherwise. They assume no responsibility for any statement that may be made in these particulars. These particulars do not form part of any offer or contract and must not be relied upon as statements or representations of fact. 2. Any areas, measurements or distances are approximate. The text, images and plans are for guidance only and are not necessarily comprehensive. It should not be assumed that the property has all necessary planning, building regulation or other consents and Savills have not tested any services, equipment or facilities. Prospective tenants must satisfy themselves by inspection or otherwise. Please note that the local area may be affected by aircraft noise, you should make your own enquiries regarding any noise within the area before you make any offer.

\*There are different rules and fees for different tenancy types. For details of our fees and charges please go to [Savills.co.uk/tenant-fees](https://www.savills.co.uk/tenant-fees). For more detailed information read our applicant guide at [savills.co.uk/applicant-guide](https://www.savills.co.uk/applicant-guide).