



# A wonderful two bedroom apartment in one of Mayfair's most popular residential buildings

**Chesterfield House, Chesterfield Gardens, Mayfair, London, W1J**

Guide Price: £2,200,000  
Share of Freehold





# A wonderful two bedroom apartment in one of Mayfair's most popular residential buildings

Double reception and dining room • Two bedrooms • Two en suite bathrooms • Fully fitted kitchen • First floor • Lift access • 24 hour porter • Service charge: TBC • Ground rent: TBC

## Local Information

Chesterfield House is superbly located at the southern end of South Audley Street, just moments away from the green expanses of both Hyde Park and Green Park, and within close proximity to the world class amenities, restaurants and flagship designer stores of Mayfair and St. James's.

The property benefits from excellent transport links, with Hyde Park tube station 0.4 mile and Green Park tube station 0.4 mile. (All distances are approximate).

## About this property

A well-presented two bedroom apartment, of 1125 sq ft, located on the first floor of one of Mayfair's most popular residential buildings. The apartment comprises a spacious reception / dining room, two double bedrooms, both with en suite bathrooms, and a fully equipped kitchen. The property also benefits from lift access and 24 hour uniformed porter.

## Tenure

Share of Freehold (996 underlying leasehold years remaining)

## Energy Performance

EPC Rating = D

## Viewing

All viewings will be accompanied and are strictly by prior arrangement through Savills Mayfair & St James's Office.

Telephone: +44 (0) 20 7578 5100.



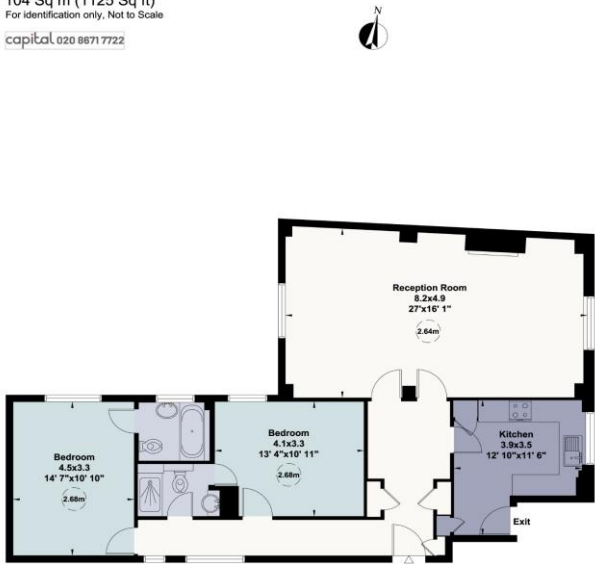


Chesterfield House, Chesterfield Gardens, Mayfair, London, W1J  
Gross Internal Area 1125 sq ft, 104.5 m<sup>2</sup>

Chesterfield House, Chesterfield Gardens, W1

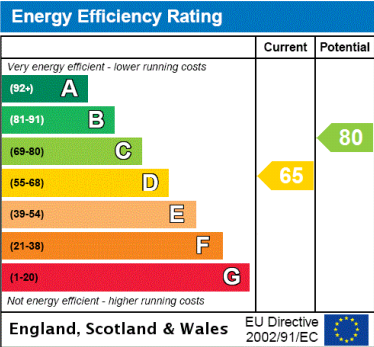
Gross internal area (approx.)  
104 Sq m (1125 Sq ft)  
For identification only. Not to Scale

capital 020 8871 7722



First Floor

Not to scale, for guidance only and must not be relied upon as a statement of fact. All measurements and areas



**Important Notice** Savills, its clients and any joint agents give notice that 1: They are not authorised to make or give any representations or warranties in relation to the property either here or elsewhere, either on their own behalf or on behalf of their client or otherwise. They assume no responsibility for any statement that may be made in these particulars. These particulars do not form part of any offer or contract and must not be relied upon as statements or representations of fact. 2: Any areas, measurements or distances are approximate. The text, photographs and plans are for guidance only and are not necessarily comprehensive. It should not be assumed that the property has all necessary planning, building regulation or other consents and Savills have not tested any services, equipment or facilities. Purchasers must satisfy themselves by inspection or otherwise. 20210323ALST

